

CHAPTER 25 — EQUIPMENT AND FURNISHINGS

TABLE OF CONTENTS

Paragraph Number	Title	Chapter/Section Number	Page Number
EQUIPMENT AND FURNISHINGS			
25-1	Equipment and Furnishings	25-00-00	3
25-2	Airworthiness and Registration Certificate Case.....	25-00-00	3
25-3	Interior.....	25-00-00	3
25-4	Interior — Cleaning.....	25-00-00	3
25-5	Interior — Inspection and Repair	25-00-00	3
25-6	Crew Seats	25-00-00	3
25-7	Crew Seats (Helicopters S/N 4 through 2211) — Removal.....	25-00-00	3
25-8	Crew Seats (Helicopters S/N 2212 through 3566) — Removal	25-00-00	3
25-9	Crew Seats (Helicopters S/N 3567 and Subsequent) — Removal	25-00-00	3
25-10	Crew Seats — Inspection and Repair.....	25-00-00	4
25-11	Crew Seats (Helicopters S/N 4 through 2211) — Installation...	25-00-00	4
25-12	Crew Seats (Helicopters S/N 2212 through 3566) — Installation	25-00-00	4
25-13	Crew Seats (Helicopters S/N 3567 and Subsequent) — Installation.....	25-00-00	4
25-14	Passenger Seats.....	25-00-00	4
25-15	Passenger Seats (Helicopters S/N 4 through 2211) — Removal	25-00-00	4
25-16	Passenger Seats (Helicopters S/N 2212 through 3566) — Removal	25-00-00	7
25-17	Passenger Seats (Helicopters S/N 3567 and Subsequent) — Removal	25-00-00	7
25-18	Passenger Seats — Inspection and Repair.....	25-00-00	7
25-19	Passenger Seats (Helicopters S/N 4 through 2211) — Installation	25-00-00	7
25-20	Passenger Seats (Helicopters S/N 2212 through 3566) — Installation	25-00-00	7
25-21	Passenger Seats (Helicopters S/N 3567 and Subsequent) — Installation	25-00-00	7
25-22	Seat Belt System (Helicopters S/N 4 through 3121).....	25-00-00	7
25-23	Seat Belt System (Helicopters S/N 4 through 3121) — Removal	25-00-00	7
25-24	Seat Belt System (Helicopters S/N 4 through 3121) — Installation	25-00-00	8
25-25	Restraint System (Helicopters S/N 3122 and Subsequent)	25-00-00	8
25-26	Crew Restraint — Removal	25-00-00	8
25-27	Crew Restraint — Installation	25-00-00	8
25-28	Passenger Restraint — Removal	25-00-00	8
25-29	Passenger Restraint — Installation	25-00-00	8
25-30	Cargo and Maintenance Platforms	25-00-00	8
25-31	Baggage Compartment.....	25-00-00	8

TABLE OF CONTENTS (CONT)

Paragraph Number	Title	Chapter/Section Number	Page Number
25-32	First Aid Kit	25-00-00	9
25-33	Loose Equipment.....	25-00-00	9

FIGURES

Figure Number	Title	Page Number
25-1	Seat and Belt Installation (Helicopters S/N 4 through 3121).....	5
25-2	Restraint Installation (Helicopters S/N 3122 and Subsequent).....	6

EQUIPMENT AND FURNISHINGS

25-1. EQUIPMENT AND FURNISHINGS

This chapter provides instructions for maintenance of equipment and furnishings provided in the crew and passenger compartments. Included are such items as crew seats, passenger seats, seat belts, interior trim, registration certificate case, first aid kit, and loose equipment. A cargo and maintenance platform is available as optional equipment.

25-2. AIRWORTHINESS AND REGISTRATION CERTIFICATE CASE

The airworthiness and registration certificate case is riveted to the right forward side of the instrument panel console. Both certificates are required to be carried at all times.

25-3. INTERIOR

The interior furnishings such as carpets, headliners, trim panels, hat bin, seats, seat belts, etc., require periodic cleaning and inspection.

25-4. INTERIOR — CLEANING

Clean upholstery, carpet, headliner, and trim panels in crew and passenger compartments in accordance with [BHT-ALL-SPM](#).

25-5. INTERIOR — INSPECTION AND REPAIR

MATERIALS REQUIRED

Refer to [BHT-ALL-SPM](#) for specifications.

NUMBER	NOMENCLATURE
C-312	Adhesive

1. Inspect interior trim, carpets, and upholstery for cleanliness.

2. Inspect trim panels, boots, scuff plates, etc., for loose or missing hardware and damage. Repair or replace as required.

3. Inspect that carpet is securely bonded to structure. If carpet is loose, bond carpet to structure with adhesive ([C-312](#)).

25-6. CREW SEATS

The two crew seats in helicopters S/N 4 through 3212 are constructed of aluminum honeycomb panels and form an integral part of the airframe. Helicopters S/N 3213 and subsequent have stamped sheet metal seat bottoms in place of aluminum honeycomb panels. The left seat converts from a passenger seat to a copilot seat with the dual control kit installed. Each seat is equipped with cushions and a lap-type safety belt.

NOTE

Procedures in [paragraph 25-7](#) through [paragraph 25-9](#) apply to helicopters not modified by [TB 206-93-144](#) and [Service Instruction 206-30](#) (Inertia Reel and Shoulder Harness).

25-7. CREW SEATS (HELICOPTERS S/N 4 THROUGH 2211) — REMOVAL

1. Remove seat cushions. Cushions are secured by hook and pile tape fastener.

2. Remove screws and washers securing honeycomb panels to gain access to area under seat.

25-8. CREW SEATS (HELICOPTERS S/N 2212 THROUGH 3566) — REMOVAL

1. Remove back cushion by pulling forward at corner. Hook and pile tape fastener will separate.

2. Remove seat skirt (12, [Figure 25-1](#)) by removing trim screws and trim washers.

3. Remove screws (11) and washers (9), and remove seat cushion.

25-9. CREW SEATS (HELICOPTERS S/N 3567 AND SUBSEQUENT) — REMOVAL

1. Remove seat skirt (12, [Figure 25-1](#)) by removing screws and trim washers.

2. Pull retaining pin (16, [Figure 25-2](#)) from outboard side of bottom cushion. Rotate bottom cushion up around seat-to-back hinge until back support clears seat pan.

3. Pull cushion assembly down, rotating bottom forward as required until fittings at top of seat-back disengages and releases seat. Remove seat from helicopter.

4. Remove screws and washers securing fitting and separate cushion assemblies, if desired.

25-10. CREW SEATS — INSPECTION AND REPAIR

Inspect crew seats for cleanliness, and torn or damaged upholstery. Repair or replace as required.

25-11. CREW SEATS (HELICOPTERS S/N 4 THROUGH 2211) — INSTALLATION

1. Align honeycomb panels and install screws and washers.

2. Position seat cushions and engage hook and pile tape fastener.

NOTE

On helicopters S/N 4 through 3121 not modified by [TB 206-93-144](#) and [Service Instruction 206-30](#) (Inertia Reel and Shoulder Harness), each seat is equipped with frame bottom cushion, back cushion, and lap-type safety belt ([Figure 25-1](#)).

NOTE

On helicopters S/N 3122 and subsequent and previous helicopters modified by [TB 206-93-144](#) and [Service Instruction 206-30](#) (Inertia Reel and Shoulder Harness), each seat is equipped with frame bottom cushion, back cushion, lap belt, shoulder harness, and inertia reel ([Figure 25-2](#)).

25-12. CREW SEATS (HELICOPTERS S/N 2212 THROUGH 3566) — INSTALLATION

1. Install bottom cushion on panel using screws (11, [Figure 25-1](#)) and washers (9).

2. Locate back cushion in position and press to engage hook and pile tape fastener.

25-13. CREW SEATS (HELICOPTERS S/N 3567 AND SUBSEQUENT) — INSTALLATION

1. Connect seat cushion frames by installing hinge fittings, if necessary.

2. Place seat-back cushion frame against bulkhead and align fittings with slots on bulkhead. Raise seat-back to engage frame to slots of the fittings installed on the structure.

3. Rotate seat bottom cushion in under back cushion. Align forward fittings with eyebolts, (17, [Figure 25-2](#)) and then push frame down over eyebolts and install pin (16).

4. Install seat skirt (12, [Figure 25-1](#)) using previously removed screws and trim washers.

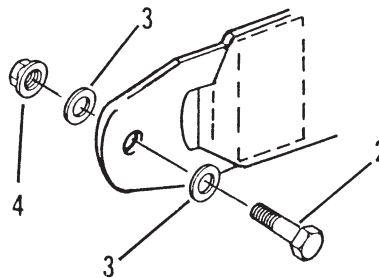
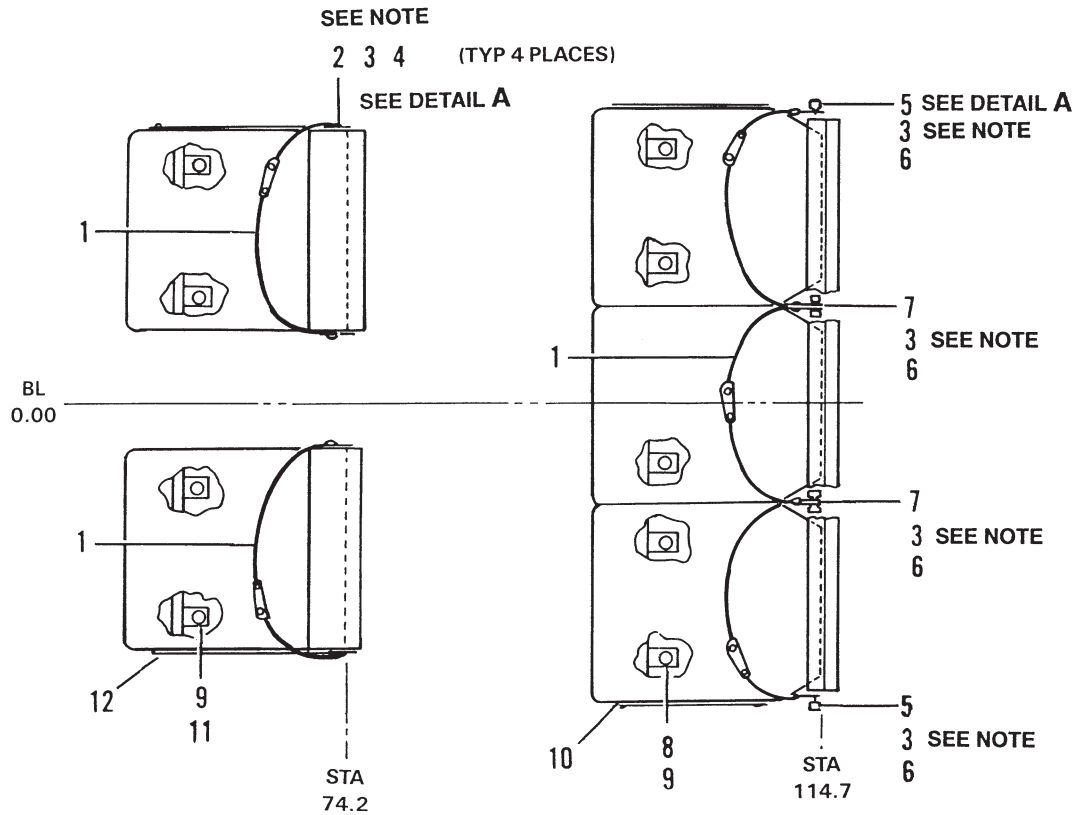
25-14. PASSENGER SEATS

The aft compartment provides seating for three passengers or, with seats removed, space for cargo is provided. The seat support is constructed of aluminum honeycomb panels and covers the forward portion of the fuel cell. The seat deck is composed of three panel assemblies and the center panel is removable to gain access to the forward part of the fuel cell. The aft seats are provided with cushions and lap-type safety belts.

25-15. PASSENGER SEATS (HELICOPTERS S/N 4 THROUGH 2211) — REMOVAL

1. Remove seat cushions. Cushions are secured by hook and pile tape fastener.

2. If access is desired to forward part of fuel tank, remove screws securing the center honeycomb panel.



DETAIL A

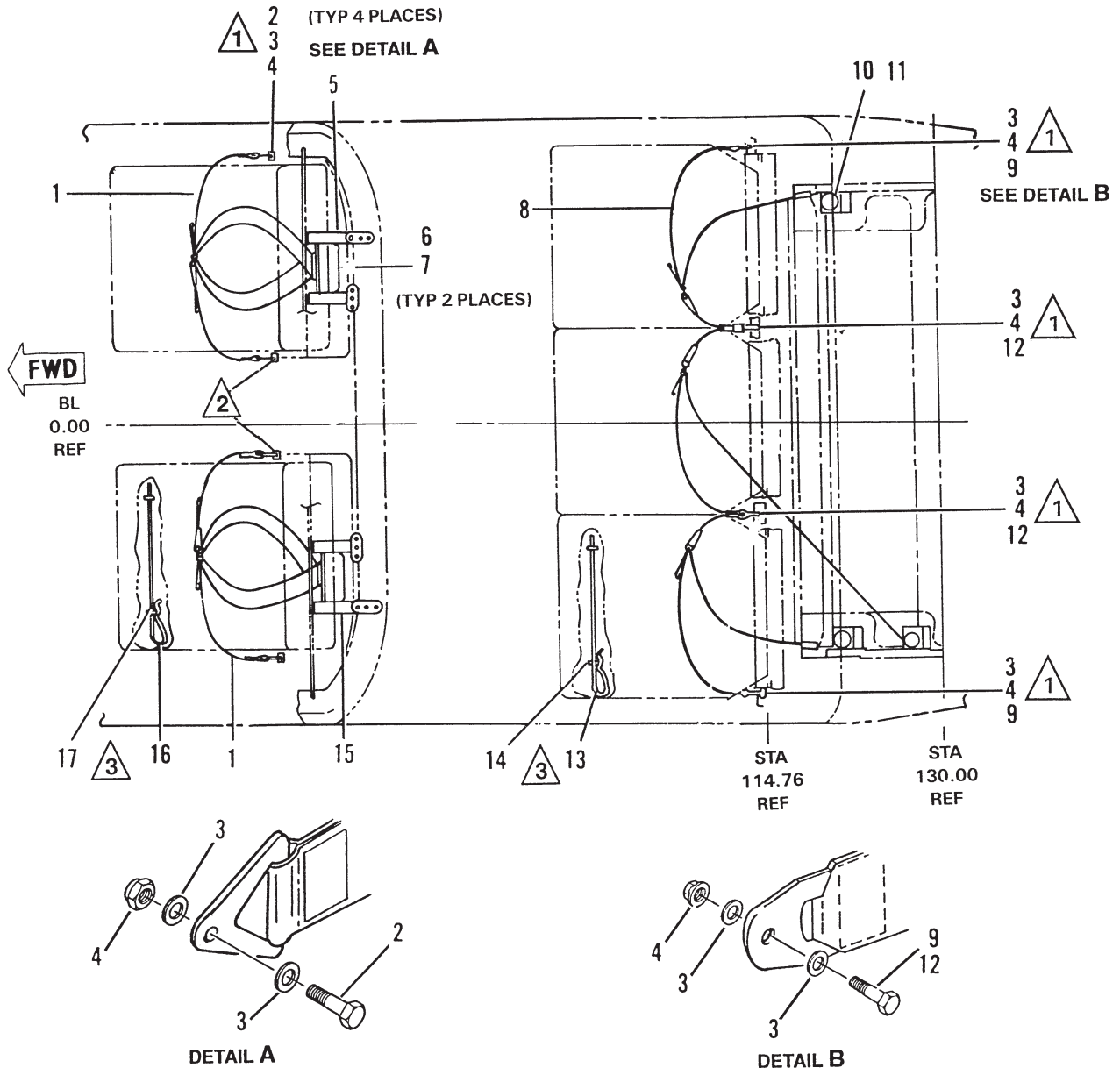
- | | | |
|-------------|----------|-----------|
| 1. Lap belt | 5. Bolt | 9. Washer |
| 2. Bolt | 6. Nut | 10. Skirt |
| 3. Washer | 7. Bolt | 11. Screw |
| 4. Cap nut | 8. Screw | 12. Skirt |

NOTE

Install one washer under bolt head and one washer under nut.

206AB_MM_25_0001

Figure 25-1. Seat and Belt Installation (Helicopters S/N 4 through 3121)



- | | | | |
|-----------------------|----------------------|------------------|------------------|
| 1. Restraint assembly | 6. Inertia reel | 10. Inertia reel | 14. Eyebolt |
| 2. Bolt | 7. Screw | 11. Screw | 15. Reel support |
| 3. Washer | 8. Resraint assembly | 12. Bolt | 16. Pin |
| 4. Nut | 9. Bolt | 13. Pin | 17. Eyebolt |
| 5. Reel support | | | |

NOTES

- ① Install one washer under bolt head and one washer under nut.
- ② Install lap belt end fitting on inboard face of fitting.
- ③ Seat cushion pin and eyebolt retention is effective on helicopter S/N 3567 and subsequent.

206AB_MM_25_0002

Figure 25-2. Restraint Installation (Helicopters S/N 3122 and Subsequent)

**25-16. PASSENGER SEATS (HELICOPTERS
S/N 2212 THROUGH 3566) — REMOVAL**

1. Remove seat skirts (10, [Figure 25-1](#)) by removing trim screws and trim washers.
2. Remove seat bottom cushion by removing screws (8) and washers (9) under seat.
3. To remove seat back cushion, remove screws at bottom of seat panel.
4. Raise cushion and pull forward to separate seat panel from shoulder screws.

**25-17. PASSENGER SEATS (HELICOPTERS
S/N 3567 AND SUBSEQUENT) —
REMOVAL**

1. To remove seat bottom cushion, remove pin (13, [Figure 25-2](#)) under seat holding frame to structure panel. Remove cushion.
2. To remove seat back cushion, pull down to release frame from fittings. Remove cushion.

**25-18. PASSENGER SEATS — INSPECTION AND
REPAIR**

Inspect passenger seats for cleanliness, and torn or damaged upholstery. Repair or replace as required.

**25-19. PASSENGER SEATS (HELICOPTERS
S/N 4 THROUGH 2211) — INSTALLATION**

1. If access was made to forward part of fuel tank, install screws securing the center honeycomb panel.
2. Install seat cushions by engaging hook and pile tape fastener.

**25-20. PASSENGER SEATS (HELICOPTERS
S/N 2212 THROUGH 3566) —
INSTALLATION**

1. To install seat back cushion, engage cushion panel over shoulder screws and drop panel to securely locked position.

2. Install screws and washers in tabs at lower corners of seat panel.

3. To install seat bottom cushion, place cushion on structure panel and install screws (8, [Figure 25-1](#)) and washers (9).

4. Install seat skirts (10) on outboard sides of bottom cushions using trim screws and trim washers.

**25-21. PASSENGER SEATS (HELICOPTERS
S/N 3567 AND SUBSEQUENT) —
INSTALLATION**

1. Install seat back cushion by placing frame cross tubes below opening in fittings and raising up into position.

2. Install eyebolts (14, [Figure 25-2](#)) in seat base panel, if necessary.

3. To install seat bottom cushion, place cushion on structure panel and drop slotted frame fittings over eyebolts (14).

4. Install retaining pin (13) through both eyebolts (14).

**25-22. SEAT BELT SYSTEM (HELICOPTERS
S/N 4 THROUGH 3121)**

Each seat is equipped with a lap-type safety belt anchored to structure at each side of the seat ([Figure 25-1](#)). A personnel restraint kit is available as an option for pilot and copilot seats ([Service Instruction 206-30](#)). Personnel restraints are available as an option for passenger seats ([TB 206-93-144](#)).

NOTE

[Paragraph 25-23](#) and [paragraph 25-24](#) are applicable to helicopters not incorporating the restraint system described in [paragraph 25-25](#).

**25-23. SEAT BELT SYSTEM (HELICOPTERS
S/N 4 THROUGH 3121) — REMOVAL**

Remove lap belt (1, [Figure 25-1](#)) by removing cotter pin, nut (4), washers (3), and bolt (2) from airframe fitting at each side of seat.

25-24. SEAT BELT SYSTEM (HELICOPTERS S/N 4 THROUGH 3121) — INSTALLATION

1. Lay seat belt (1, [Figure 25-1](#)) out on seat with buckle half on inboard side of seat away from door.
2. Install each half to airframe fitting using bolt (2, 5, or 7), washers (3), nut (4 or 6), and cotter pin where applicable. Install one washer (3) under bolt head and one washer (3) under nut.

25-25. RESTRAINT SYSTEM (HELICOPTERS S/N 3122 AND SUBSEQUENT)

NOTE

[Paragraph 25-26](#) through [paragraph 25-29](#) also apply to helicopters S/N 4 through 3121 modified by [TB 206-93-144](#) and [Service Instruction 206-30](#).

Each pilot and passenger seat is equipped with lap belt, shoulder harness, and inertia reel ([Figure 25-2](#)).

25-26. CREW RESTRAINT — REMOVAL

1. Remove screws (7, [Figure 25-2](#)) attaching inertia reel (6) to support reel assembly (5 or 15). Remove inertia reel and shoulder harness.
2. Remove bolt (2), washers (3), and nut (4) from each side fitting. Remove restraint assembly (1).

25-27. CREW RESTRAINT — INSTALLATION

1. Lay out restraint assembly (1, [Figure 25-2](#)) on seat and connect as shown.
2. Feed shoulder harness through trim guide and mount inertia reel (6) using four screws (7).
3. Connect restraint assembly (1) at side fittings using bolts (2), washers (3), and nuts (4). Install seat belt end fitting on inboard face of structure fitting. Install one washer (3) under bolt head and one washer (3) under nut (4).

25-28. PASSENGER RESTRAINT — REMOVAL

1. Remove hat bin trim by removing trim screws and trim washers.

2. Remove screws (11, [Figure 25-2](#)) and inertia reel (10). Feed strap from guide in hat bin and remove inertia reel and strap assembly.

3. Remove bolt (9), washers (3) and nut (4) connecting lap belt to each side fitting. Remove seat belt.

25-29. PASSENGER RESTRAINT — INSTALLATION

1. Lay out restraint assembly (8, [Figure 25-2](#)) on seat and connect as shown.

2. Feed shoulder harness strap through guide in hat bin and install inertia reel (10) on structure with four screws (11).

3. Replace hat bin trim panel.

4. Connect restraint assembly (8) at side fittings using bolt (9), washers (3), and nut (4) for outboard fitting location and bolt (12), washers (3), and nut (4) for inboard fitting location. Install one washer (3) under bolt head and one washer (3) under nut (4).

25-30. CARGO AND MAINTENANCE PLATFORMS

Dual purpose cargo and maintenance platforms are available as optional equipment. When used as an interior cargo platform, either or both rear seats are removed and platform sections are installed in the rear compartment. The platforms consist of bonded aluminum and plywood panels and provide airframe attachment points and cargo tie-down rings. When not in use as a cargo or work platform, the sections are stowed in the baggage compartment. The work platform may be installed on either side of the helicopter.

25-31. BAGGAGE COMPARTMENT

The baggage compartment is located on the left side of helicopter. A hinged access door is provided and the compartment provides 16 cubic feet (0.45 m³) of space. The baggage compartment is constructed of aluminum alloy and honeycomb paneling and provides access to the heater and electrical compartment door. Procedure for lock replacement is the same as for cabin door locks except that a spacer is used in the baggage door. (Refer to [Chapter 52](#) for repair of latch

assembly and to [Chapter 53](#) for repair of honeycomb compartment floor.)

25-32. FIRST AID KIT

The first aid kit is provided as loose equipment and can be mounted to the console pedestal or in map and data case.

25-33. LOOSE EQUIPMENT

Equipment and furnishings required for operation and maintenance provided as loose equipment are listed in the [BHT-206A/B-SERIES-IPB](#).

