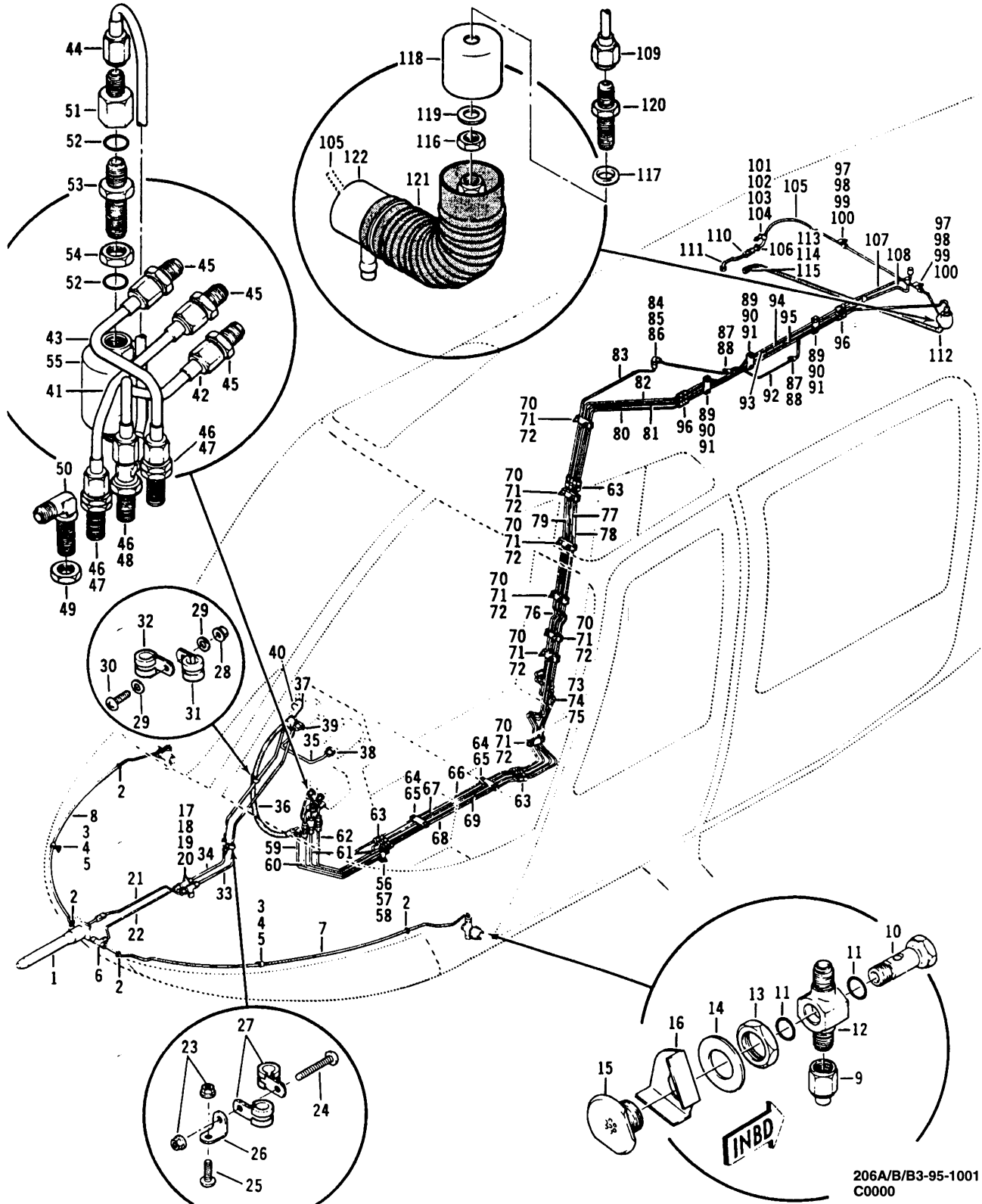


CONTENTS - IPB

Figure Number	Figure Title	Chapter/Section Number	Page Number
95-1	Piping installation, instrument (S/N 4 thru 153)	95-99-00	2
95-2	Piping installation, instrument (S/N 154 thru 253) . . .	95-99-00	8
95-3	Piping installation, instrument (S/N 154 thru 253) . . .	95-99-00	12
95-4	Piping installation, instrument (S/N 254 thru 413) . . .	95-99-00	16
95-5	Piping installation, instrument (S/N 414 thru 913) . . .	95-99-00	18
95-6	Piping installation, instrument (S/N 914 thru 1413) . .	95-99-00	22
95-7	Piping installation, pitot/static and engine	95-99-00	28
95-8	Piping installation, pitot/static and engine	95-99-00	36
95-9	Panel installation, instrument (S/N 4 thru 153)	95-99-00	40
95-10	Panel installation, instrument (S/N 154 thru 913) . . .	95-99-00	44
95-11	Panel installation, instrument (S/N 914 thru 3386) . .	95-99-00	50
95-12	Panel installation, instrument and glareshield (S/N 3387 thru sub)	95-99-00	56
95-13	Compass; thermometer and hourmeter installations	95-99-00	64



206A/B/B3-95-1001
C0000

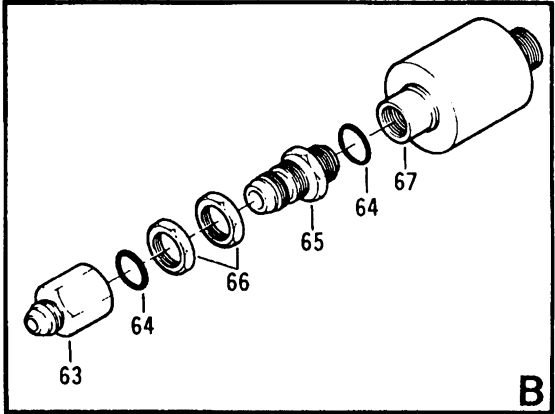
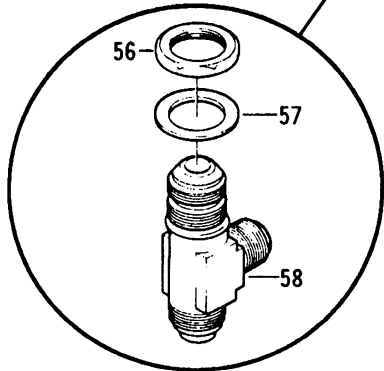
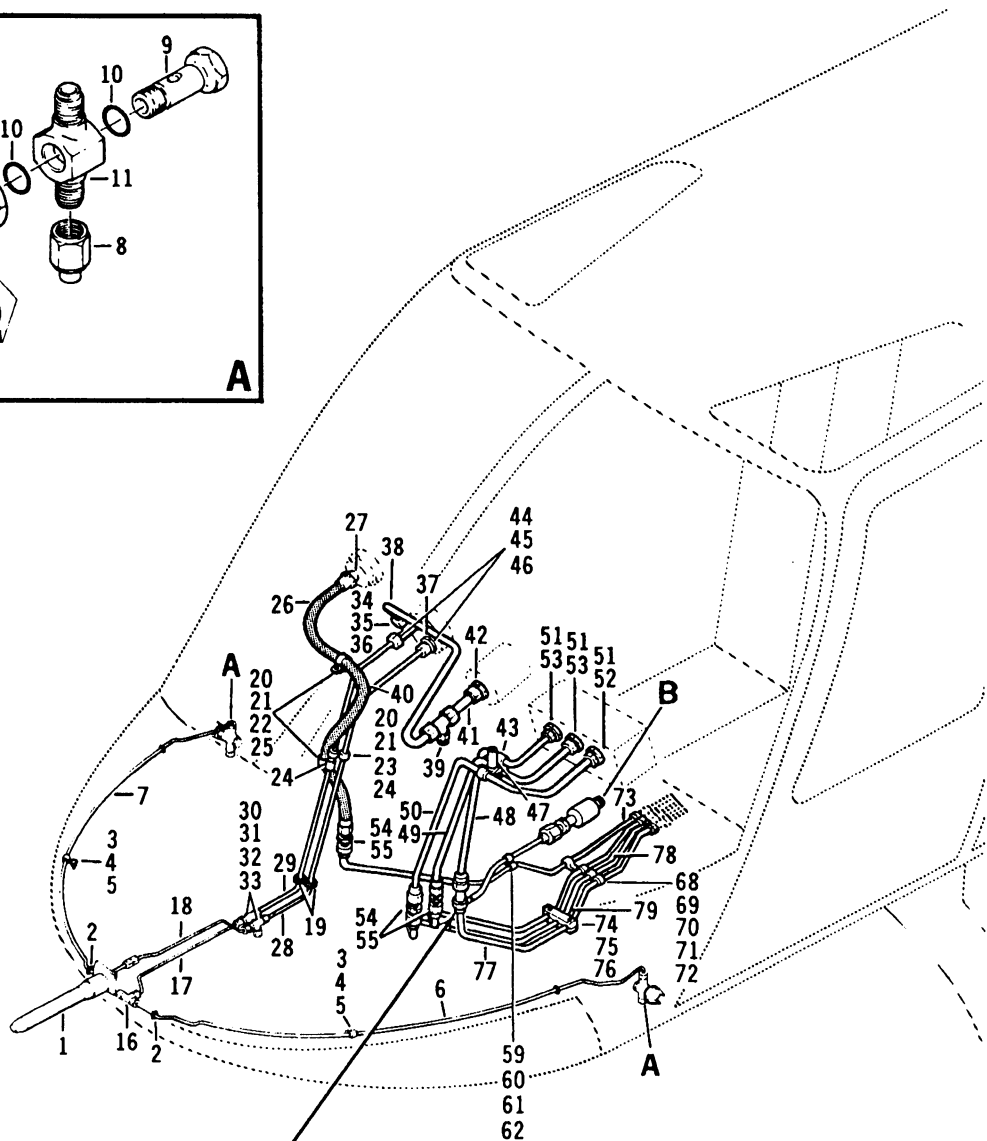
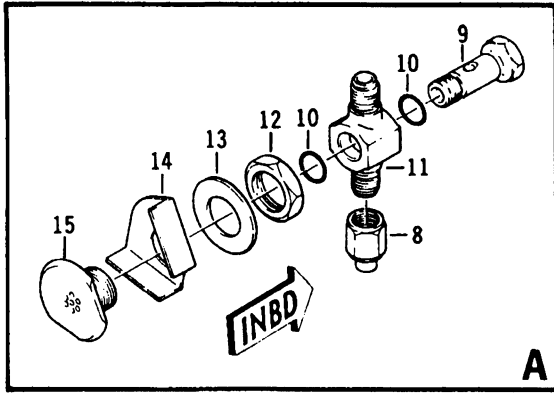
Figure 95-1. Piping installation, instrument (S/N 4 thru 153)

(1) INDEX NUMBER	(2) PART NUMBER	(3) ITEM NAME	(4) UNIT PER ASSY	(5) A V A I L	(6) U O C
		FIGURE: 95-1. Piping installation, instrument (S/N 4 thru 153)			
	206-070-104-003	PIPING INSTL, INSTRUMENT	1		
1	PH500	.PITOT TUBE (REPLACED BY AN5813-1)	1		
1	AN5813-1	.PITOT TUBE (REPLACES PH500)	1		
2	MS35489-7	.GROMMET	4		
3	MS21042L3	.NUT	2		
4	AN520-10R8	.SCREW (REPLACED BY MS35207-263)	2		
4	MS35207-263	.SCREW (REPLACES AN520-10R8)	2		
5	MS25281-4	.CLAMP (REPLACED BY MS25281R4)	2		
5	MS25281R4	.CLAMP (REPLACES MS25281-4)	2		
6	AN824-4D	.TEE	1		
7	206-070-544-001	.TUBE ASSY, STATIC, LH	1		
8	206-070-545-001	.TUBE ASSY, STATIC, RH	1		
9	AN929-4	.CAP	2		
10	NAS551-4D	.BOLT	2		
11	MS28778-4	.PACKING, PREFORMED	4		
12	NAS555-4D	.TEE	2		
13	AN924-8D	.NUT	2		
14	AN960PD1216	.WASHER (REPLACED BY AN960JD1216)	2		
14	AN960JD1216	.WASHER (REPLACES AN960PD1216)	2		
15	206-070-539-001	.BAFFLE	2		
16	206-070-122-003	.PORT, STATIC (REPLACED BY 206-070-122-101)	2		
16	206-070-122-101	.PORT, STATIC (REPLACES 206-070-122-003)	2		
17	AN924-4D	.NUT	2		
18	AN960PD716	.WASHER (REPLACED BY AN960JD716)	2		
18	AN960JD716	.WASHER (REPLACES AN960PD716)	2		
19	AN929-4	.CAP	2		
20	AN804D4	.TEE	2		
21	206-070-547-001	.TUBE ASSY, PILOT PRESSURE	1		
22	206-070-546-001	.TUBE ASSY, STATIC PRESSURE	1		
23	MS21042L3	.NUT	2		
24	AN520-10R12	.SCREW (REPLACED BY MS35207-265)	1		
24	MS35207-265	.SCREW (REPLACES AN520-10R12)	1		
25	AN520-10R8	.SCREW (REPLACED BY MS35207-263)	1		
25	MS35207-263	.SCREW (REPLACES AN520-10R8)	1		
26	AN743-12	.BRACKET	1		
27	MS25281-4	.CLAMP (REPLACED BY MS25281R4)	2		
27	MS25281R4	.CLAMP (REPLACES MS25281-4)	2		
28	MS21042L3	.NUT	1		
29	AN960PD10L	.WASHER (REPLACED BY AN960JD10L)	2		
29	AN960JD10L	.WASHER (REPLACES AN960PD10L)	2		
30	MS27039-1-09	.SCREW	1		
31	MS21919DG4	.CLAMP (REPLACED BY MS21919WDG4)	1		
31	MS21919WDG4	.CLAMP (REPLACES MS21919DG4)	1		
32	MS21919DG6	.CLAMP (REPLACED BY MS21919WDG6)	1		
32	MS21919WDG6	.CLAMP (REPLACES MS21919DG6)	1		
33	206-070-464-001	.TUBE ASSY, PILOT PRESSURE	1		
34	206-070-462-001	.TUBE ASSY, STATIC PRESSURE	1		
35	206-070-463-001	.TUBE ASSY, STATIC PRESSURE	1		
36	AN6270-3-25	.HOSE ASSY (REPLACED BY AN6270-3D0250)	1		

(1) INDEX NUMBER	(2) PART NUMBER	(3) ITEM NAME	(4) UNIT PER ASSY	(5) A V A I L	(6) U O C
FIGURE: 95-1. Piping installation, instrument (S/N 4 thru 153) (Cont'd)					
36	AN6270-3D0250	.HOSE ASSY (REPLACES AN6270-3-25)	1		
37	206-070-108-001	.RESTRICTOR ASSY (REPLACED BY 047-706-133-001) . . .	1		
37	047-706-133-001	.RESTRICTOR ASSY (REPLACES 206-070-108-001)	1		
38	206-070-108-003	.RESTRICTOR ASSY (REPLACED BY 047-712-023-004) . . .	1		
38	047-712-023-004	.RESTRICTOR ASSY (REPLACES 206-070-108-003)	1		
39	AN816-4D	.ADAPTER	1		
40	AN919-3D	.REDUCER	1		
41	206-070-538-001	.TUBE ASSY, ENGINE OIL PRESSURE	1		
42	206-070-536-001	.TUBE ASSY, XMSN OIL PRESSURE	1		
43	206-070-537-001	.TUBE ASSY, FUEL PRESSURE	1		
44	206-070-548-001	.TUBE ASSY, ENGINE OIL PRESSURE	1		
45	AN919-2D	.REDUCER	3		
46	AN924-3D	.NUT	3		
47	AN832-3D	.UNION	2		
48	AN804D3	.TEE	1		
49	AN924-3D	.NUT	1		
50	AN833-3D	.ELBOW	1		
51	AN894D4-3	.BUSHING	1		
52	MS29512-04	.PACKING, PREFORMED	2		
53	AN832-4D	.UNION	1		
54	AN924-4D	.NUT	1		
55	204-040-376-001	.SWITCH, OIL PRESSURE	1		
56	MS21042L08	.NUT	2		
57	MS27039-0810	.SCREW	2		
58	206-070-190-005	.CLAMP	2		
59	206-070-451-001	.TUBE ASSY, TORQUE PRESSURE	1		
60	206-070-447-001	.TUBE ASSY, ENGINE OIL PRESSURE	1		
61	206-070-454-001	.TUBE ASSY, XMSN OIL PRESSURE	1		
62	206-070-443-001	.TUBE ASSY, FUEL PRESSURE	1		
63	AN815-3D	.UNION	12		
64	MS29039-0812	.SCREW	4		
65	206-070-190-005	.CLAMP	4		
66	206-070-446-001	.TUBE ASSY, ENGINE OIL PRESSURE	1		
67	206-070-450-001	.TUBE ASSY, TORQUE PRESSURE	1		
68	206-070-453-001	.TUBE ASSY, XMSN OIL PRESSURE	1		
69	206-070-442-001	.TUBE ASSY, FUEL PRESSURE	1		
70	MS21042L08	.NUT	14		
71	MS27039-0810	.SCREW	14		
72	206-070-190-005	.CLAMP	14		
73	MS21042L08	.NUT	1		
74	AN507-832R10	.SCREW (REPLACED BY MS24693S51)	1		
74	MS24693S51	.SCREW (REPLACES AN507-832R10)	1		
75	206-070-190-001	.CLAMP	2		
76	206-070-180-001	.TUBE ASSY, ENGINE OIL PRESSURE	1		
77	206-070-176-001	.TUBE ASSY, TORQUE PRESSURE	1		
78	206-070-170-001	.TUBE ASSY, FUEL PRESSURE	1		
79	206-070-184-001	.TUBE ASSY, XMSN OIL PRESSURE (REPLACED BY 206-075-671-001)	1		

(1) INDEX NUMBER	(2) PART NUMBER	(3) ITEM NAME	(4) UNIT PER ASSY	(5) A V A I L	(6) U O C
		FIGURE: 95-1. Piping installation, instrument (S/N 4 thru 153) (Cont'd)			
79	206-075-671-001	.TUBE ASSY, XMSN OIL PRESSURE (REPLACES 206-070-184-001)	1		
80	206-070-441-001	.TUBE ASSY, FUEL PRESSURE	1		
81	206-070-449-001	.TUBE ASSY, TORQUE PRESSURE	1		
82	206-070-445-001	.TUBE ASSY, ENGINE OIL PRESSURE	1		
83	206-070-528-001	.TUBE ASSY, XMSN OIL PRESSURE	1		
84	AN924-3D	.NUT	1		
85	AN960PD616	.WASHER (REPLACED BY AN960JD616)	1		
85	AN960JD616	.WASHER (REPLACES AN960PD616)	1		
86	AN833-3D	.ELBOW	1		
87	AN520-10R8	.SCREW (REPLACED BY MS35207-263)	2		
87	MS35207-263	.SCREW (REPLACES AN520-10R8)	2		
88	MS25281-3	.CLAMP (REPLACED BY MS25281R3)	2		
88	MS25281R3	.CLAMP (REPLACES MS25281-3)	2		
89	MS21042L08	.NUT	6		
90	MS27039-0810	.SCREW	6		
91	206-070-190-003	.CLAMP	6		
92	206-070-452-001	.TUBE ASSY, XMSN OIL PRESSURE	1		
93	206-070-529-001	.TUBE ASSY, ENGINE OIL PRESSURE	1		
94	206-070-530-001	.TUBE ASSY, TORQUE PRESSURE	1		
95	206-070-531-001	.TUBE ASSY, FUEL PRESSURE	1		
96	AN815-3D	.UNION	6		
97	MS21042L3	.NUT	2		
98	AN520-10R8	.SCREW (REPLACED BY MS35207-263)	2		
98	MS35207-263	.SCREW (REPLACES AN520-10R8)	2		
99	MS25281-3	.CLAMP (REPLACED BY MS25281R3)	2		
99	MS25281R3	.CLAMP (REPLACES MS25281-3)	2		
100	AN743-12	.BRACKET	2		
101	MS21042L3	.NUT	1		
102	NAS43DD3-48	.SPACER (REPLACED BY NAS43DD3-48N)	1		
102	NAS43DD3-48N	.SPACER (REPLACES NAS43DD3-48)	1		
103	AN520-10R20	.SCREW (REPLACED BY MS35207-268)	1		
103	MS35207-268	.SCREW (REPLACES AN520-10R20)	1		
104	MS25281-3	.CLAMP (REPLACED BY MS25281R3)	1		
104	MS25281R3	.CLAMP (REPLACES MS25281-3)	1		
105	206-070-542-001	.TUBE ASSY, FUEL PRESSURE	1		
106	MS35489-134	.GROMMET	1		
107	206-070-444-001	.TUBE ASSY, ENGINE OIL PRESSURE	1		
108	206-070-448-001	.TUBE ASSY, TORQUE PRESSURE	1		
109	206-070-440-001	.TUBE ASSY, FUEL PRESSURE	1		
110	AN815-3D	.UNION	1		
111	206-070-543-001	.TUBE ASSY	1		
112	306-4-0400	.HOSE (REPLACED BY 70-033-04-0400)	1		
112	70-033-04-0400	.HOSE (REPLACES 306-4-0400)	1		
113	AN924-4D	.NUT	1		
114	MS29512-04	.PACKING, PREFORMED	1		
115	206-070-205-001	.ADAPTER	1		
116	AN924-3D	.NUT	1		
117	AN900-6	.GASKET (REPLACED BY MS35769-6)	1		

(1) INDEX NUMBER	(2) PART NUMBER	(3) ITEM NAME	(4) UNIT PER ASSY	(5) A V A I L	(6) U O C
		FIGURE: 95-1. Piping installation, instrument (S/N 4 thru 153) (Cont'd)			
117	MS35769-6	.GASKET (REPLACES AN900-6)	1		
118	D23D27	.CUP	1		
119	AN960PD616	.WASHER (REPLACED BY AN960JD616)	1		
119	AN960JD616	.WASHER (REPLACES AN960PD616)	1		
120	AN832-3D	.UNION	1		
121	3-5598-11-18-3	.DUCT	1		
122	A23D28	.SHROUD	1		



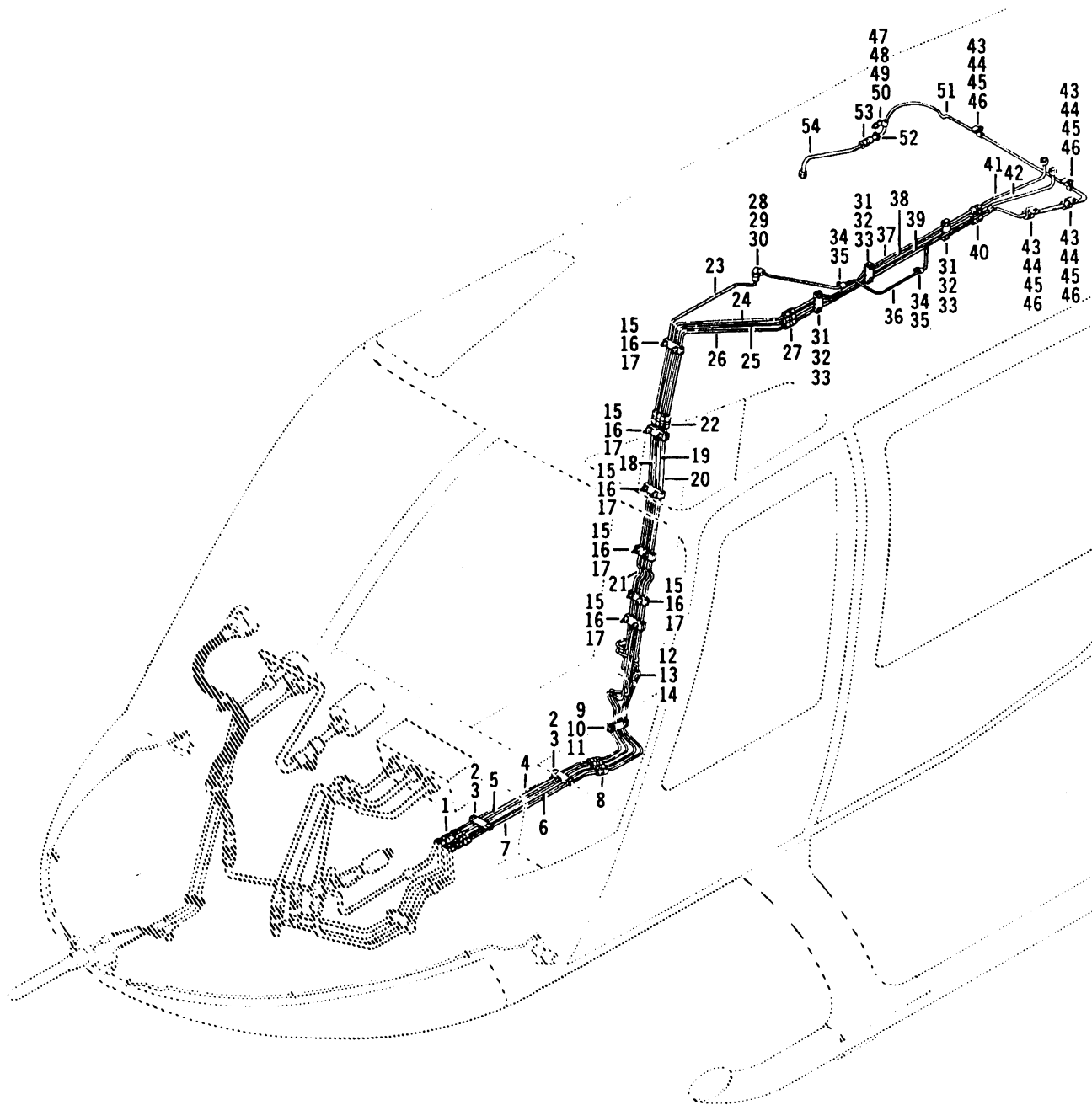
206A/B/B3-95-1002
C0000

Figure 95-2. Piping installation, instrument (S/N 154 thru 253)

(1) INDEX NUMBER	(2) PART NUMBER	(3) ITEM NAME	(4) UNIT PER ASSY	(5) A V A I L	(6) U O C
		FIGURE: 95-2. Piping installation, instrument (S/N 154 thru 253)			
	206-070-742-001	PIPING INSTL, INSTRUMENT (SEE FIG. 3 FOR BALANCE . . . OF BREAKDOWN)	1		
1	PH500	.PITOT TUBE (REPLACED BY AN5813-1)	1		
1	AN5813-1	.PITOT TUBE (REPLACES PH500)	1		
2	MS35489-7	.GROMMET	2		
3	NAS679A3	.NUT (REPLACED BY MS21042L3)	2		
3	MS21042L3	.NUT (REPLACES NAS679A3)	2		
4	AN520-10R8	.SCREW (REPLACED BY MS35207-263)	2		
4	MS35207-263	.SCREW (REPLACES AN520-10R8)	2		
5	MS25281R4	.CLAMP (REPLACED BY MS25281-R4)	2		
5	MS25281-R4	.CLAMP (REPLACES MS25281R4)	2		
6	206-070-544-001	.TUBE ASSY	1		
7	206-070-545-001	.TUBE ASSY	1		
8	AN929-4	.CAP	2		
9	NAS551-4D	.BOLT	2		
10	MS28778-4	.PACKING, PREFORMED	4		
11	NAS555-4D	.TEE	2		
12	AN924-8D	.NUT	2		
13	AN960PD1216	.WASHER (REPLACED BY AN960JD1216)	2		
13	AN960JD1216	.WASHER (REPLACES AN960PD1216)	2		
14	206-070-539-001	.BAFFLE	2		
15	206-070-122-003	.PORT, STATIC	2		
16	AN824-4D	.TEE	1		
17	206-070-546-001	.TUBE ASSY	1		
18	206-070-547-001	.TUBE ASSY	1		
19	MS35489-7	.GROMMET	2		
20	NAS679A3	.NUT (REPLACED BY MS21042L3)	3		
20	MS21042L3	.NUT (REPLACES NAS679A3)	3		
21	AN960PD10L	.WASHER (REPLACED BY AN960JD10L)	3		
21	AN960JD10L	.WASHER (REPLACES AN960PD10L)	3		
22	AN520-10R12	.SCREW (REPLACED BY MS35207-265)	2		
22	MS35207-265	.SCREW (REPLACES AN520-10R12)	2		
23	AN520-10R7	.SCREW (REPLACED BY MS35207-262)	1		
23	MS35207-262	.SCREW (REPLACES AN520-10R7)	1		
24	MS25281R4	.CLAMP (REPLACED BY MS25281-R4)	3		
24	MS25281-R4	.CLAMP (REPLACES MS25281R4)	3		
25	MS25281R5	.CLAMP (REPLACED BY MS25281-R5)	2		
25	MS25281-R5	.CLAMP (REPLACES MS25281R5)	2		
26	70-010E000D250	.HOSE ASSY (REPLACED BY 70-061E000D250A)	1		
26	70-061E000D250A	.HOSE ASSY (REPLACES 70-010E000D250)	1		
27	AN816-3D	.NIPPLE	1		
28	206-070-751-001	.TUBE ASSY	1		
29	206-070-752-001	.TUBE ASSY	1		
30	AN924-4D	.NUT	2		
31	AN960PD716	.WASHER (REPLACED BY AN960JD716)	2		
31	AN960JD716	.WASHER (REPLACES AN960PD716)	2		
32	AN804D4	.TEE	2		
33	AN929-4	.CAP	2		
34	AN924-4D	.NUT (NOTE 1)	1		

(1) INDEX NUMBER	(2) PART NUMBER	(3) ITEM NAME	(4) UNIT PER ASSY	(5) A V A I L	(6) U O C
FIGURE: 95-2. Piping installation, instrument (S/N 154 thru 253) (Cont'd)					
35	206-070-108-027	.TEE (NOTE 1)	1		
36	206-070-108-023	.RESTRICTOR (NOTE 1)	1		
37	MS21900D4	.ADAPTER (REPLACED BY MS21900W4)	1		
37	MS21900W4	.ADAPTER (REPLACES MS21900D4) (ALTERNATE PART)	1		
37	206-070-108-025	.RESTRICTOR	1		
38	206-070-638-001	.TUBE ASSY	1		
39	AN929-4	.CAP	1		
40	AN824-4D	.TEE	1		
41	206-070-639-001	.TUBE ASSY, STATIC	1		
42	AN816-4D	.ADAPTER	1		
43	NAS679A3	.NUT (REPLACED BY MS21042L3)	1		
43	MS21042L3	.NUT (REPLACES NAS679A3)	1		
44	AN960PD10L	.WASHER (REPLACED BY AN960JD10L)	2		
44	AN960JD10L	.WASHER (REPLACES AN960PD10L)	2		
45	AN520-10R36	.SCREW (REPLACED BY MS35207-272)	1		
45	MS35207-272	.SCREW (REPLACES AN520-10R36)	1		
46	MS25281R3	.CLAMP (REPLACED BY MS25281-R3)	3		
46	MS25281-R3	.CLAMP (REPLACES MS25281R3)	3		
47	NAS43DD3-73	.SPACER	1		
48	206-070-636-001	.TUBE ASSY	1		
49	206-070-637-001	.TUBE ASSY	1		
50	206-070-748-001	.TUBE ASSY	1		
51	AN919-2D	.REDUCER	3		
52	MS29512-04	.PACKING, PREFORMED	1		
53	MS28778-4	.PACKING, PREFORMED	2		
54	AN924-3D	.NUT	3		
55	AN832-3D	.UNION	3		
56	AN924-3D	.NUT	1		
57	AN960PD616	.WASHER (REPLACED BY AN960JD616)	1		
57	AN960JD616	.WASHER (REPLACES AN960PD616)	1		
58	AN804D3	.TEE	1		
59	MS21042L3	.NUT	1		
60	AN960PD10L	.WASHER (REPLACED BY AN960JD10L)	2		
60	AN960JD10L	.WASHER (REPLACES AN960PD10L)	2		
61	AN520-10R10	.SCREW (REPLACED BY MS35207-264)	1		
61	MS35207-264	.SCREW (REPLACES AN520-10R10)	1		
62	MS25281R3	.CLAMP (REPLACED BY MS25281-R3)	2		
62	MS25281-R3	.CLAMP (REPLACES MS25281R3)	2		
63	AN894D4-3	.BUSHING	1		
64	MS28778-4	.PACKING, PREFORMED	2		
65	AN832-4D	.UNION	1		
66	AN924-4D	.NUT	2		
67	204-040-376-001	.SWITCH	1		
68	NAS679A3	.NUT (REPLACED BY MS21042L3)	4		
68	MS21042L3	.NUT (REPLACES NAS679A3)	4		
69	AN960PD10L	.WASHER (REPLACED BY AN960JD10L)	4		
69	AN960JD10L	.WASHER (REPLACES AN960PD10L)	4		
70	AN520-10R18	.SCREW	4		

(1) INDEX NUMBER	(2) PART NUMBER	(3) ITEM NAME	(4) UNIT PER ASSY	(5) A V A I L	(6) U O C
		FIGURE: 95-2. Piping installation, instrument (S/N 154 thru 253) (Cont'd)			
71	MS25281R3	.CLAMP (REPLACED BY MS25281-R3)	4		
71	MS25281-R3	.CLAMP (REPLACES MS25281R3)	4		
72	AN743-12	.BRACKET	2		
73	206-070-750-001	.TUBE ASSY	1		
74	MS27039-0810	.SCREW	2		
75	AN960PD8L	.WASHER (REPLACED BY AN960JD8L)	2		
75	AN960JD8L	.WASHER (REPLACES AN960PD8L)	2		
76	206-070-190-003	.CLAMP	2		
77	206-070-744-001	.TUBE ASSY	1		
78	206-070-747-001	.TUBE ASSY	1		
79	206-070-749-001	.TUBE ASSY	1		
		NOTE 1: 206-070-108-023 RESTRICTOR IS AN ALTERNATE FOR 206-070-108-027 TEE AND AN924D4 NUT AS A UNIT.			

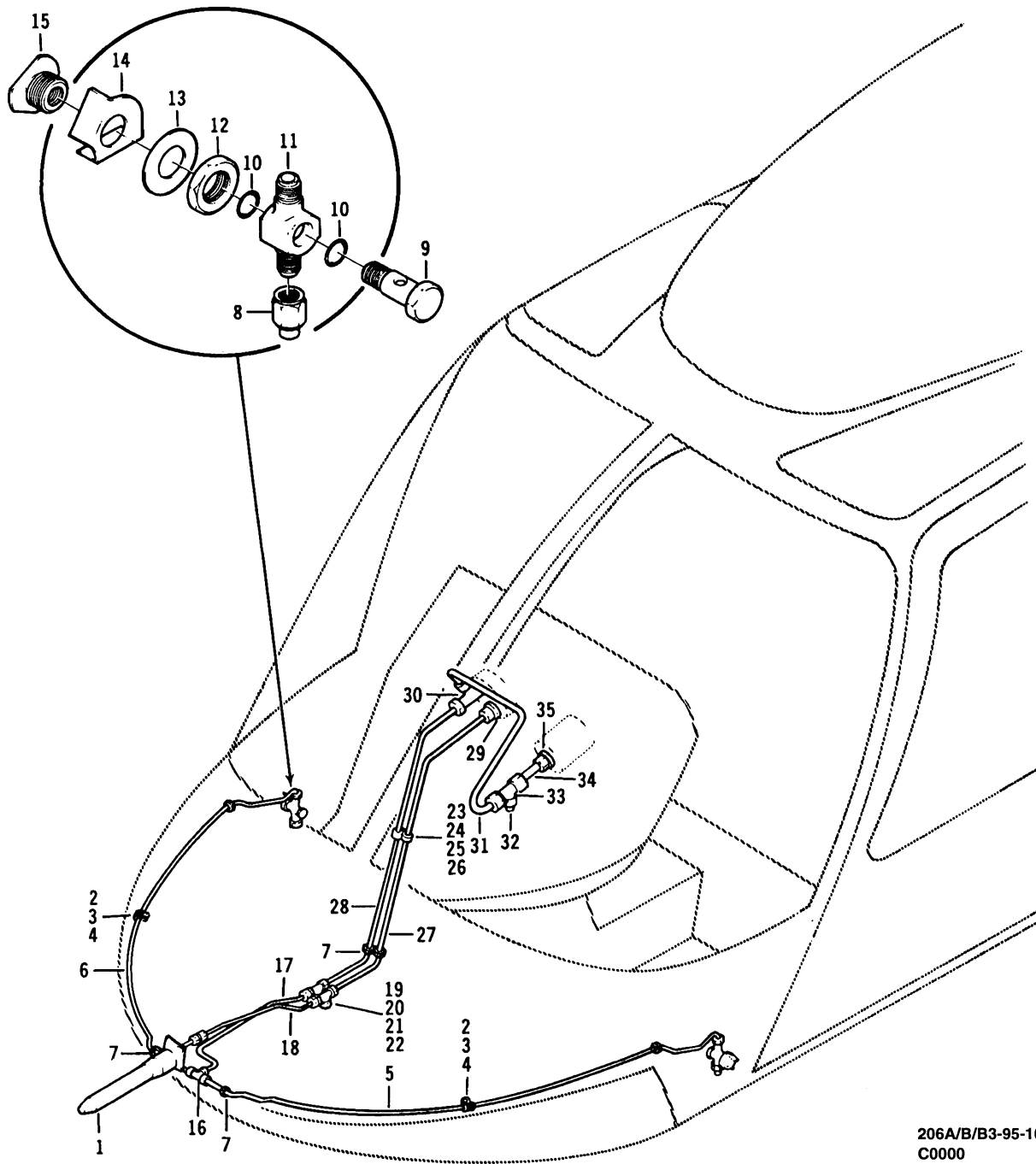


206A/B/B3-95-1003
C0000

Figure 95-3. Piping installation, instrument (S/N 154 thru 253)

(1) INDEX NUMBER	(2) PART NUMBER	(3) ITEM NAME	(4) UNIT PER ASSY	(5) A V A I L	(6) U O C
		FIGURE: 95-3. Piping installation, instrument (S/N 154 thru 253)			
	206-070-742-001	PIPING INSTL, INSTRUMENT (SEE FIG. 2 FOR BALANCE . . . OF BREAKDOWN)	REF		
1	AN815-3D	.UNION	4		
2	MS27039-0812	.SCREW	4		
3	206-070-190-005	.CLAMP	4		
4	206-070-450-001	.TUBE ASSY	1		
5	206-070-446-001	.TUBE ASSY	1		
6	206-070-442-001	.TUBE ASSY	1		
7	206-070-453-001	.TUBE ASSY	1		
8	AN815-3D	.UNION	4		
9	NAS679A08	.NUT (REPLACED BY MS21042L08)	2		
9	MS21042L08	.NUT (REPLACES NAS679A08)	2		
10	MS27039-0810	.SCREW	2		
11	206-070-190-005	.CLAMP	2		
12	NAS679A08	.NUT (REPLACED BY MS21042L08)	1		
12	MS21042L08	.NUT (REPLACES NAS679A08)	1		
13	MS24693S51	.SCREW (REPLACED BY MS24693-S51)	1		
13	MS24693-S51	.SCREW (REPLACES MS24693S51)	1		
14	206-070-190-001	.CLAMP	2		
15	NAS679A08	.NUT (REPLACED BY MS21042L08)	12		
15	MS21042L08	.NUT (REPLACES NAS679A08)	12		
16	MS27039-0810	.SCREW	12		
17	206-070-190-005	.CLAMP	12		
18	206-070-180-001	.TUBE ASSY	1		
19	206-070-176-001	.TUBE ASSY	1		
20	206-070-170-001	.TUBE ASSY	1		
21	206-070-184-001	.TUBE ASSY (REPLACED BY 206-075-671-001)	1		
21	206-075-671-001	.TUBE ASSY (REPLACES 206-070-184-001)	1		
22	AN815-3D	.UNION	4		
23	206-070-528-001	.TUBE ASSY	1		
24	206-070-445-001	.TUBE ASSY	1		
25	206-070-449-001	.TUBE ASSY	1		
26	206-070-441-001	.TUBE ASSY	1		
27	AN815-3D	.UNION	3		
28	AN924-3D	.NUT	1		
29	AN960PD616	.WASHER (REPLACED BY AN960JD616)	1		
29	AN960JD616	.WASHER (REPLACES AN960PD616)	1		
30	AN833-3D	.ELBOW	1		
31	NAS679A08	.NUT (REPLACED BY MS21042L08)	6		
31	MS21042L08	.NUT (REPLACES NAS679A08)	6		
32	MS27039-0810	.SCREW	6		
33	206-070-190-003	.CLAMP	6		
34	AN520-10R8	.SCREW (REPLACED BY MS35207-263)	2		
34	MS35207-263	.SCREW (REPLACES AN520-10R8)	2		
35	MS25281R3	.CLAMP (REPLACED BY MS25281-R3)	2		
35	MS25281-R3	.CLAMP (REPLACES MS25281R3)	2		
36	206-070-452-001	.TUBE ASSY	1		
37	206-070-529-001	.TUBE ASSY	1		
38	206-070-530-001	.TUBE ASSY	1		

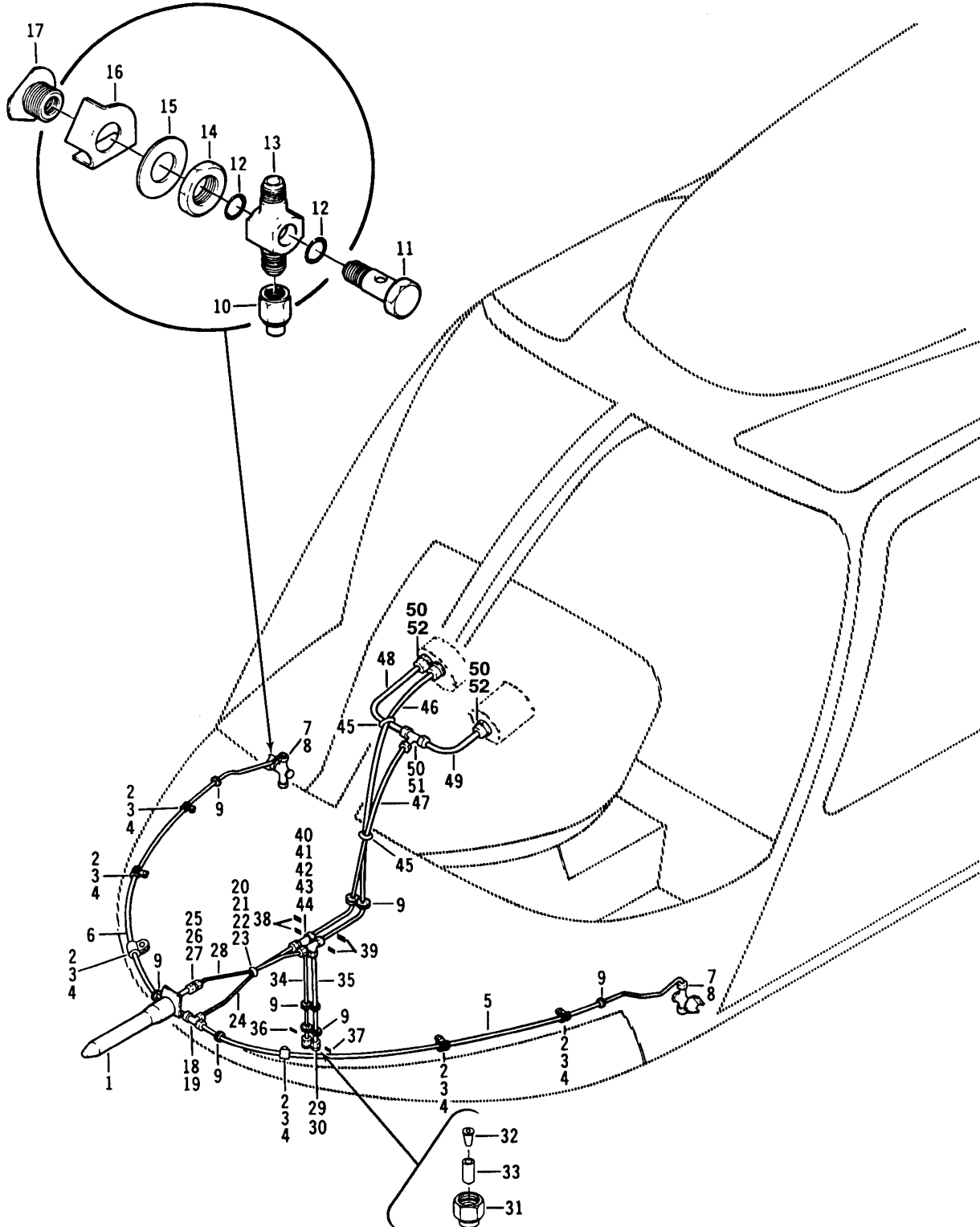
(1) INDEX NUMBER	(2) PART NUMBER	(3) ITEM NAME	(4) UNIT PER ASSY	(5) A V A I L	(6) U O C
		FIGURE: 95-3. Piping installation, instrument (S/N 154 thru 253) (Cont'd)			
39	206-070-531-001	.TUBE ASSY	1		
40	AN815-3D	.UNION	3		
41	206-070-444-001	.TUBE ASSY	1		
42	206-070-448-001	.TUBE ASSY	1		
43	NAS679A3	.NUT (REPLACED BY MS21042L3)	4		
43	MS21042L3	.NUT (REPLACES NAS679A3)	4		
44	AN520-10R8	.SCREW (REPLACED BY MS35207-263)	4		
44	MS35207-263	.SCREW (REPLACES AN520-10R8)	4		
45	MS25281R3	.CLAMP (REPLACED BY MS25281-R3)	4		
45	MS25281-R3	.CLAMP (REPLACES MS25281R3)	4		
46	AN743-12	.BRACKET	4		
47	NAS679A3	.NUT (REPLACED BY MS21042L3)	1		
47	MS21042L3	.NUT (REPLACES NAS679A3)	1		
48	AN520-10R36	.SCREW (REPLACED BY MS35207-272)	1		
48	MS35207-272	.SCREW (REPLACES AN520-10R36)	1		
49	NAS43DD3-112	.SPACER	1		
50	MS25281R3	.CLAMP (REPLACED BY MS25281-R3)	1		
50	MS25281-R3	.CLAMP (REPLACES MS25281R3)	1		
51	206-070-754-001	.TUBE ASSY	1		
52	MS35489-134	.GROMMET	1		
53	AN815-3D	.UNION	1		
54	206-070-543-001	.TUBE ASSY	1		



206A/B/B3-95-1004
C0000

Figure 95-4. Piping installation, instrument (S/N 254 thru 413)

(1) INDEX NUMBER	(2) PART NUMBER	(3) ITEM NAME	(4) UNIT PER ASSY	(5) A V A I L	(6) U O C
		FIGURE: 95-4. Piping installation, instrument (S/N 254 thru 413)			
	206-070-742-005	PIPING INSTL, INSTRUMENT	1		
1	PH500	.PITOT TUBE (REPLACED BY AN5813-1)	1		
1	AN5813-1	.PITOT TUBE (REPLACES PH500)	1		
2	NAS679A3	.NUT (REPLACED BY MS21042L3)	2		
2	MS21042L3	.NUT (REPLACES NAS679A3)	2		
3	AN520-10R8	.SCREW (REPLACED BY MS35207-263)	2		
3	MS35207-263	.SCREW (REPLACES AN520-10R8)	2		
4	MS25281R4	.CLAMP (REPLACED BY MS25281-R4)	2		
4	MS25281-R4	.CLAMP (REPLACES MS25281R4)	2		
5	206-070-544-001	.TUBE ASSY	1		
6	206-070-545-001	.TUBE ASSY	1		
7	MS35489-7	.GROMMET	4		
8	AN929-4	.CAP	2		
9	NAS551-4D	.BOLT	2		
10	MS28778-4	.PACKING, PREFORMED	4		
11	NAS555-4D	.TEE	2		
12	AN924-8D	.NUT	2		
13	AN960PD1216	.WASHER (REPLACED BY AN960JD1216)	2		
13	AN960JD1216	.WASHER (REPLACES AN960PD1216)	2		
14	206-070-539-001	.BAFFLE	2		
15	206-070-122-003	.PORT, STATIC	2		
16	AN824-4D	.TEE	1		
17	206-070-546-001	.TUBE ASSY	1		
18	206-070-547-001	.TUBE ASSY	1		
19	AN929-4	.CAP	2		
20	AN924-4D	.NUT	2		
21	AN960PD716	.WASHER (REPLACED BY AN960JD716)	2		
21	AN960JD716	.WASHER (REPLACES AN960PD716)	2		
22	AN804D4	.TEE	2		
23	NAS679A3	.NUT (REPLACED BY MS21042L3)	1		
23	MS21042L3	.NUT (REPLACES NAS679A3)	1		
24	AN960PD10L	.WASHER (REPLACED BY AN960JD10L)	1		
24	AN960JD10L	.WASHER (REPLACES AN960PD10L)	1		
25	AN520-10R12	.SCREW (REPLACED BY MS35207-265)	1		
25	MS35207-265	.SCREW (REPLACES AN520-10R12)	1		
26	MS25281R4	.CLAMP (REPLACED BY MS25281-R4)	2		
26	MS25281-R4	.CLAMP (REPLACES MS25281R4)	2		
27	206-070-751-001	.TUBE ASSY	1		
28	206-070-752-001	.TUBE ASSY	1		
29	AN816-4D	.ADAPTER	1		
30	MS20826-4D	.TEE	1		
31	206-070-638-001	.TUBE ASSY	1		
32	AN929-4	.CAP	1		
33	AN824-4D	.TEE	1		
34	206-070-639-001	.TUBE ASSY	1		
35	AN816-4D	.ADAPTER	1		

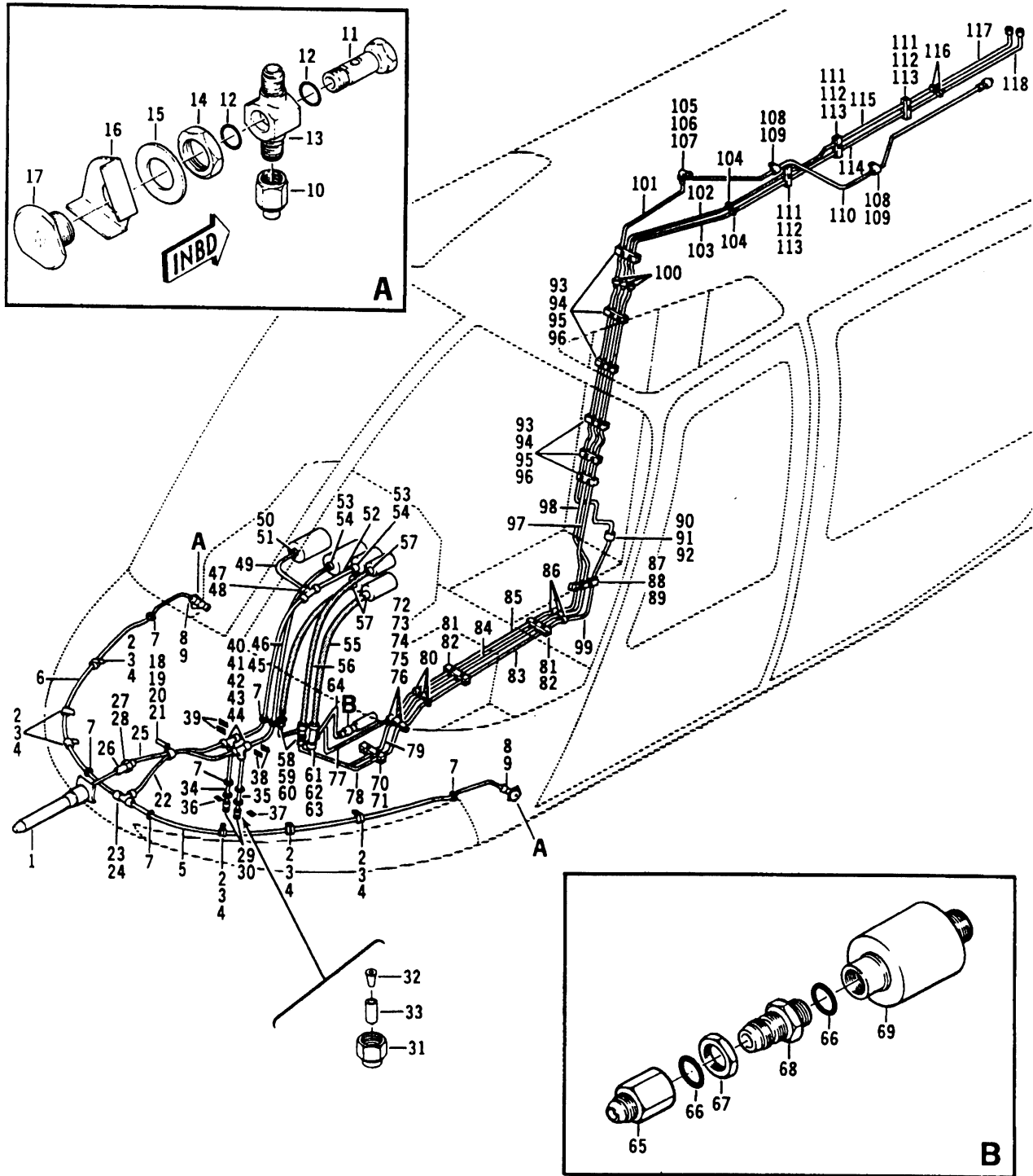


206A/B/B3-95-1005
C0000

Figure 95-5. Piping installation, instrument (S/N 414 thru 913)

(1) INDEX NUMBER	(2) PART NUMBER	(3) ITEM NAME	(4) UNIT PER ASSY	(5) A V A I L	(6) U O C
		FIGURE: 95-5. Piping installation, instrument (S/N 414 thru 913)			
	206-070-898-001	PIPING INSTL, INSTRUMENT	1		
1	PH500	.PITOT TUBE (REPLACED BY AN5813-1)	1		
1	AN5813-1	.PITOT TUBE (REPLACES PH500)	1		
2	NAS679A3	.NUT (REPLACED BY MS21042L3)	6		
2	MS21042L3	.NUT (REPLACES NAS679A3)	6		
3	AN520-10R8	.SCREW (REPLACED BY MS35207-263)	6		
3	MS35207-263	.SCREW (REPLACES AN520-10R8)	6		
4	MS25281R4	.CLAMP (REPLACED BY MS25281-R4)	6		
4	MS25281-R4	.CLAMP (REPLACES MS25281R4)	6		
5	206-070-898-021	.TUBE	1		
6	206-070-898-023	.TUBE	1		
7	259N1-4	.UNION	2		
8	261N1-4	.NUT AND SLEEVE ASSY	2		
9	MS35489-7	.GROMMET	10		
10	ZY400P	.CAP	2		
11	NAS551-4D	.BOLT	2		
12	MS28778-4	.PACKING, PREFORMED	4		
13	NAS1240A4	.TEE	2		
14	AN924-8D	.NUT	2		
15	AN960PD1216	.WASHER (REPLACED BY AN960JD1216)	2		
15	AN960JD1216	.WASHER (REPLACES AN960PD1216)	2		
16	206-070-539-001	.BAFFLE	2		
17	206-070-122-003	.PORT, STATIC	2		
18	259N1-4	.UNION	3		
19	264N1-4	.TEE	1		
20	NAS679A3	.NUT (REPLACED BY MS21042L3)	1		
20	MS21042L3	.NUT (REPLACES NAS679A3)	1		
21	AN520-10R24	.SCREW (REPLACED BY MS35207-269)	1		
21	MS35207-269	.SCREW (REPLACES AN520-10R24)	1		
22	NAS43DD3-64	.SPACER	1		
23	MS25281R9	.CLAMP (REPLACED BY MS25281-R9)	1		
23	MS25281-R9	.CLAMP (REPLACES MS25281R9)	1		
24	206-070-898-025	.TUBE ASSY	1		
25	262N1-4	.UNION	1		
26	259N1-4	.UNION	1		
27	50-012-19N400	.UNION ASSY	1		
28	206-070-898-035	.TUBE ASSY	1		
29	ZY400C	.CAP ASSY	2		
30	ZY605-4	.INSERT (NOTE 1) (REPLACED BY NY605-4)	2		
30	NY605-4	.INSERT (NOTE 1) (REPLACES ZY605-4)	2		
31	50-012-08N400	.UNION ASSY (NOTE 1)	2		
32	50-012-01N404	.INSERT (NOTE 1)	2		
33	50-012-02N400	.CAP (NOTE 1)	2		
34	206-070-898-033	.TUBE	1		
35	206-070-898-039	.TUBE	1		
36	206-070-695-001	.DECAL (STATIC DRAIN)	1		
37	206-070-694-001	.DECAL (PITOT DRAIN)	1		
38	206-070-693-001	.DECAL (STATIC)	2		
39	206-070-692-001	.DECAL (PITOT)	2		

(1) INDEX NUMBER	(2) PART NUMBER	(3) ITEM NAME	(4) UNIT PER ASSY	(5) A V A I L	(6) U O C
FIGURE: 95-5. Piping installation, instrument (S/N 414 thru 913) (Cont'd)					
40	AN924-4D	.NUT	2		
41	AN960PD716	.WASHER (REPLACED BY AN960JD716)	2		
41	AN960JD716	.WASHER (REPLACES AN960PD716)	2		
42	MS21912D4	.TEE (REPLACED BY MS21912W4)	2		
42	MS21912W4	.TEE (REPLACES MS21912D4)	2		
43	261N1-4	.NUT AND SLEEVE ASSY	6		
44	259N1-4	.UNION	6		
45	MS17821-1-9	.STRAP (REPLACED BY MS3367-1-9)	2		
45	MS3367-1-9	.STRAP (REPLACES MS17821-1-9)	2		
46	206-070-898-037	.TUBE	1		
47	206-070-898-027	.TUBE	1		
48	206-070-898-031	.TUBE	1		
49	206-070-898-029	.TUBE	1		
50	259N1-4	.UNION	6		
51	264N1-4	.TEE	1		
52	268N1-4-1-8	.PIPE UNION	3		
NOTE 1: 50-021-08N400 UNION ASSY, 50-012-01N404 INSERT AND 50-012-02N400 CAP AS A UNIT REPLACES ZY605-4 INSERT.					



206A/B/B3-95-1006
C0000

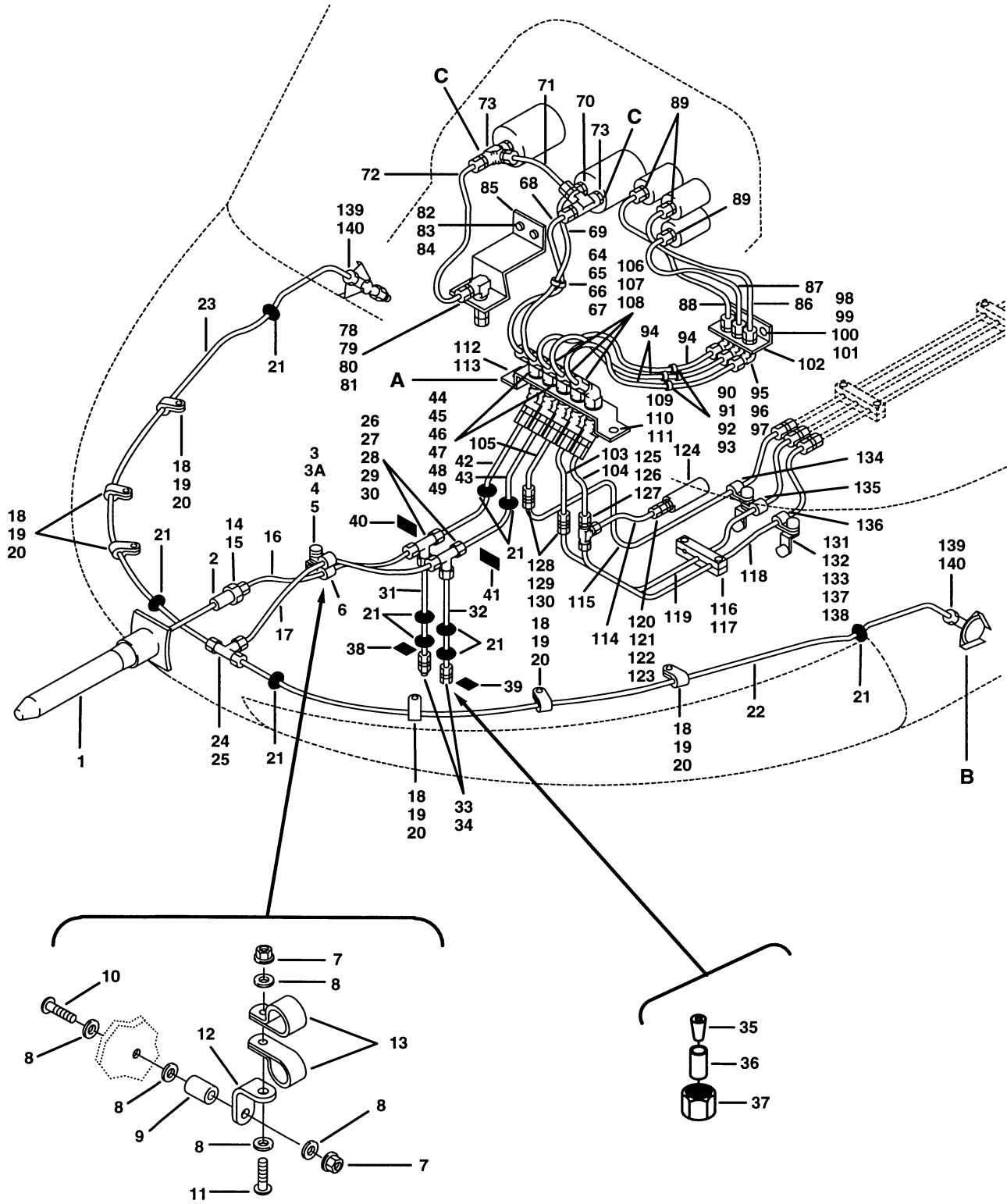
Figure 95-6. Piping installation, instrument (S/N 914 thru 1413)

(1) INDEX NUMBER	(2) PART NUMBER	(3) ITEM NAME	(4) UNIT PER ASSY	(5) A V A I L	(6) U O C
		FIGURE: 95-6. Piping installation, instrument (S/N 914 thru 1413)			
	206-070-898-003	PIPING INSTL, INSTRUMENT	1		
1	PH500	.PITOT TUBE (REPLACED BY AN5813-1)	1		
1	AN5813-1	.PITOT TUBE (REPLACES PH500)	1		
2	NAS679A3	.NUT (REPLACED BY MS21042L3)	6		
2	MS21042L3	.NUT (REPLACES NAS679A3)	6		
3	AN520-10R8	.SCREW (REPLACED BY MS35207-263)	6		
3	MS35207-263	.SCREW (REPLACES AN520-10R8)	6		
4	MS25281R4	.CLAMP (REPLACED BY MS25281-R4)	6		
4	MS25281-R4	.CLAMP (REPLACES MS25281R4)	6		
5	206-070-898-021	.TUBE	1		
6	206-070-898-023	.TUBE	1		
7	MS35489-7	.GROMMET	10		
8	259N1-4	.UNION	2		
9	261N1-4	.NUT AND SLEEVE ASSY	2		
10	ZY400P	.CAP	2		
11	NAS551-4D	.BOLT	2		
12	MS28778-4	.PACKING, PREFORMED	4		
13	NAS1240A4	.TEE	2		
14	AN924-8D	.NUT	2		
15	AN960PD1216	.WASHER (REPLACED BY AN960JD1216)	2		
15	AN960JD1216	.WASHER (REPLACES AN960PD1216)	2		
16	206-070-539-001	.BAFFLE	2		
17	206-070-122-003	.PORT, STATIC	2		
18	MS21042L3	.NUT	1		
19	MS27039-1-24	.SCREW	1		
20	NAS43DD3-64	.SPACER	1		
21	MS25281R9	.CLAMP (REPLACED BY MS25281-R9)	1		
21	MS25281-R9	.CLAMP (REPLACES MS25281R9)	1		
22	206-070-898-025	.TUBE ASSY	1		
23	259N1-4	.UNION	3		
24	264N1-4	.TEE	1		
25	206-070-898-035	.TUBE ASSY	1		
26	50-012-19N400	.UNION ASSY	1		
27	259N1-4	.UNION	1		
28	262N1-4	.UNION	1		
29	ZY400C	.CAP ASSY (NOTE 1)	2		
30	ZY605-4	.INSERT (NOTE 1) (REPLACED BY NY605-4)	2		
30	NY605-4	.INSERT (NOTE 1) (REPLACES ZY605-4)	2		
31	50-012-08N400	.UNION ASSY (NOTE 1)	2		
32	50-0121N404	.INSERT (NOTE 1)	2		
33	50-012-02N400	.CAP (NOTE 1)	2		
34	206-070-898-033	.TUBE	1		
35	206-070-898-039	.TUBE	1		
36	206-070-695-001	.DECAL (STATIC DRAIN)	1		
37	206-070-694-001	.DECAL (PITOT DRAIN)	1		
38	206-070-692-001	.DECAL (PITOT)	2		
39	206-070-693-001	.DECAL (STATIC)	2		
40	AN924-4D	.NUT	2		
41	AN960PD716	.WASHER (REPLACED BY AN960JD716)	2		

(1) INDEX NUMBER	(2) PART NUMBER	(3) ITEM NAME	(4) UNIT PER ASSY	(5) A V A I L	(6) U O C
FIGURE: 95-6. Piping installation, instrument (S/N 914 thru 1413) (Cont'd)					
41	AN960JD716	.WASHER (REPLACES AN960PD716)	2		
42	MS21912D4	.TEE (REPLACED BY MS21912W4)	2		
42	MS21912W4	.TEE (REPLACES MS21912D4)	2		
43	259N1-4	.UNION	6		
44	261N1-4	.NUT AND SLEEVE ASSY	6		
45	206-070-898-041	.TUBE	1		
46	206-070-898-045	.TUBE	1		
47	259N1-4	.UNION	3		
48	264N1-4	.TEE	1		
49	206-070-898-043	.TUBE	1		
50	259N1-4	.UNION	1		
51	268N1-4-18	.PIPE UNION	1		
52	206-070-898-047	.TUBE	1		
53	259N1-4	.UNION	2		
54	268N1-4-18	.PIPE UNION	2		
55	AN6270-3-30	.HOSE ASSY (REPLACED BY AN6270-3D0300)	1		
55	AN6270-3D0300	.HOSE ASSY (REPLACES AN6270-3-30)	1		
56	AN6270-3-33	.HOSE ASSY (REPLACED BY AN6270-3D0330)	2		
56	AN6270-3D0330	.HOSE ASSY (REPLACES AN6270-3-33)	2		
57	AN816-3D	.NIPPLE	3		
58	AN924-3D	.NUT	2		
59	AN960PD616	.WASHER (REPLACED BY AN960JD616)	2		
59	AN960JD616	.WASHER (REPLACES AN960PD616)	2		
60	AN832-3D	.UNION	2		
61	AN924-3D	.NUT	1		
62	AN960PD616	.WASHER (REPLACED BY AN960JD616)	1		
62	AN960JD616	.WASHER (REPLACES AN960PD616)	1		
63	AN804D3	.TEE	1		
64	206-070-745-001	.TUBE ASSY, TRANSMISSION	1		
65	AN894D4-3	.BUSHING	1		
66	MS28778-4	.PACKING, PREFORMED	2		
67	AN924-4D	.NUT	1		
68	AN832-4D	.UNION	1		
69	204-040-376-003	.SWITCH	1		
70	MS27039-0810	.SCREW	2		
71	206-070-190-003	.CLAMP	2		
72	MS21042L3	.NUT	3		
73	AN96PD10L	.WASHER	3		
74	MS27039-1-08	.SCREW	3		
75	MS25281R3	.CLAMP (REPLACED BY MS25281-R3)	3		
75	MS25281-R3	.CLAMP (REPLACES MS25281R3)	3		
76	AN743-12	.BRACKET	2		
77	206-070-750-001	.TUBE ASSY, TORQUE	1		
78	206-070-744-001	.TUBE ASSY, TRANSMISSION	1		
79	206-070-747-001	.TUBE ASSY, ENGINE	1		
80	AN815-3D	.UNION	3		
81	MS27039-0810	.SCREW	4		
82	206-070-190-003	.CLAMP	4		
83	206-070-453-001	.TUBE ASSY, TRANSMISSION	1		

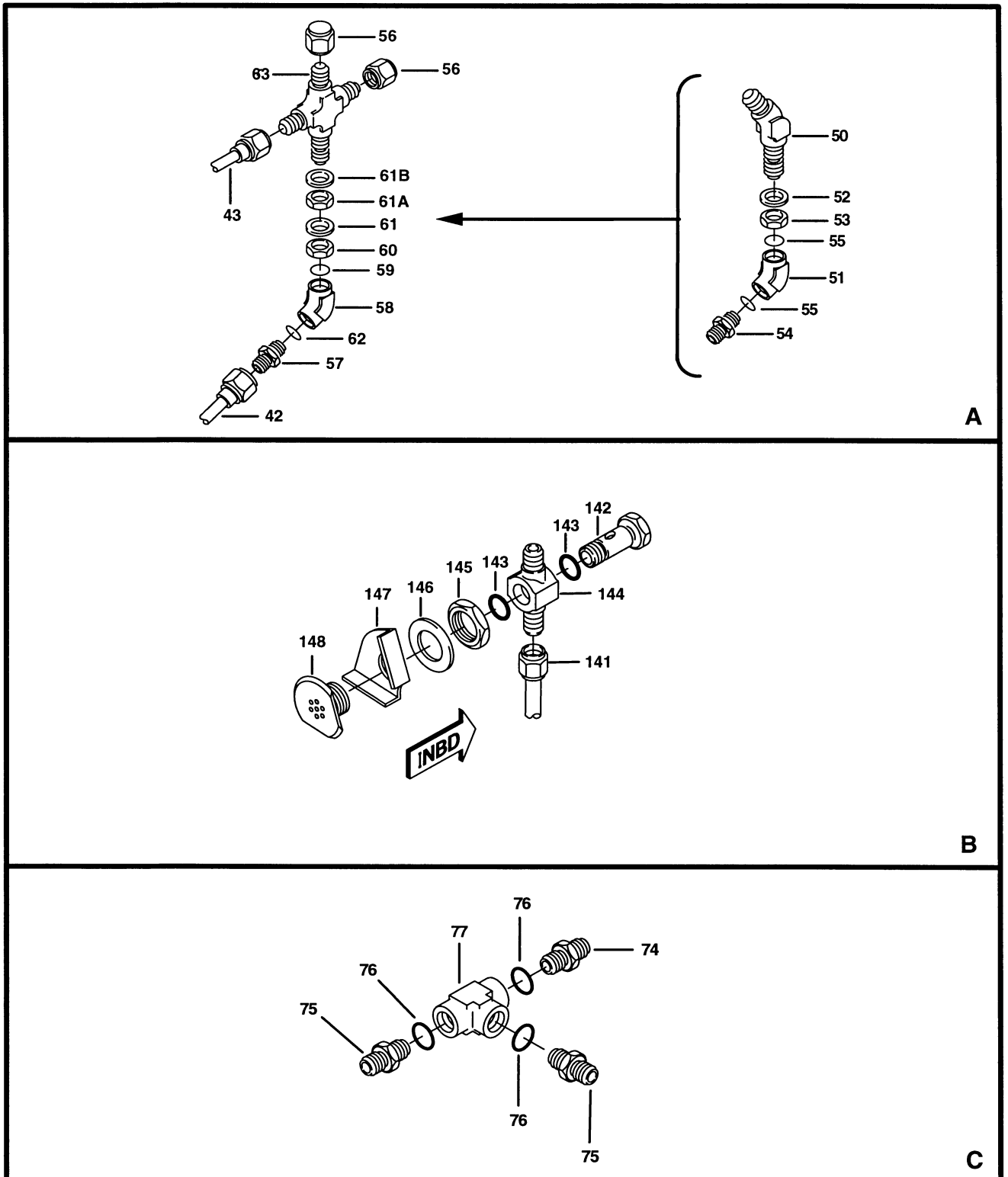
(1) INDEX NUMBER	(2) PART NUMBER	(3) ITEM NAME	(4) UNIT PER ASSY	(5) A V A I L	(6) U O C
		FIGURE: 95-6. Piping installation, instrument (S/N 914 thru 1413) (Cont'd)			
84	206-070-446-001	.TUBE ASSY, ENGINE	1		
85	206-070-450-001	.TUBE ASSY, TORQUE	1		
86	AN815-3D	.UNION	3		
87	MS21042L08	.NUT	2		
88	MS27039-0810	.SCREW	2		
89	206-070-190-003	.CLAMP	2		
90	MS21042L3	.NUT	1		
91	MS27039-1-10	.SCREW	1		
92	MS25281R3	.CLAMP (REPLACED BY MS25281-R3)	1		
92	MS25281-R3	.CLAMP (REPLACES MS25281R3)	1		
93	90-003-20	.NUT	12		
94	AN960PD8	.WASHER (REPLACED BY AN960JD8)	12		
94	AN960JD8	.WASHER (REPLACES AN960PD8)	12		
95	MS27039-0810	.SCREW	12		
96	206-070-190-003	.CLAMP	12		
97	206-070-180-001	.TUBE ASSY, ENG	1		
98	206-070-176-001	.TUBE ASSY, TORQUE	1		
99	206-070-184-001	.TUBE ASSY, TRANSMISSION (REPLACED BY 206-075-671-001)	1		
99	206-075-671-001	.TUBE ASSY, TRANSMISSION (REPLACES 206-070-184-001)	1		
100	AN815-3D	.UNION	3		
101	206-070-528-001	.TUBE ASSY, TRANSMISSION	1		
102	206-070-445-001	.TUBE ASSY, ENGINE	1		
103	206-070-449-001	.TUBE ASSY, TORQUE	1		
104	AN815-3D	.UNION	2		
105	AN924-3D	.NUT	1		
106	AN960PD616	.WASHER (REPLACED BY AN960JD616)	1		
106	AN960JD616	.WASHER (REPLACES AN960PD616)	1		
107	AN833-3D	.ELBOW	1		
108	MS27039-1-07	.SCREW	2		
109	MS25281R3	.CLAMP (REPLACED BY MS25281-R3)	2		
109	MS25281-R3	.CLAMP (REPLACES MS25281R3)	2		
110	206-070-452-001	.TUBE ASSY, TRANSMISSION	1		
111	MS21042L08	.NUT	6		
112	MS27039-0810	.SCREW	6		
113	206-070-190-001	.CLAMP	6		
114	206-070-911-001	.TUBE ASSY, ENGINE	1		
115	206-070-530-001	.TUBE ASSY, TORQUE	1		
116	AN815-3D	.UNION	2		
117	206-070-444-001	.TUBE ASSY, ENGINE (REPLACED BY 206-075-014-001 . . AND 206-075-662-001)	1		
117	206-075-014-001	.TUBE ASSY, ENGINE (REPLACES 206-070-444-001) . . . (REPLACED BY 206-075-662-001)	1		
117	206-075-662-001	.TUBE ASSY, ENGINE (REPLACES 206-070-444-001 AND . 206-075-014-001)	1		
118	206-070-448-001	.TUBE ASSY, TORQUE (REPLACED BY 206-075-015-001 . . AND 206-075-663-001)	1		

(1) INDEX NUMBER	(2) PART NUMBER	(3) ITEM NAME	(4) UNIT PER ASSY	(5) A V A I L	(6) U O C
		FIGURE: 95-6. Piping installation, instrument (S/N 914 thru 1413) (Cont'd)			
118	206-075-015-001	.TUBE ASSY, TORQUE (REPLACES 206-070-448-001) . . . (REPLACED BY 206-075-663-001)	1		
118	206-075-663-001	.TUBE ASSY, TORQUE (REPLACES 206-075-015-001 AND . 206-070-448-001)	1		
		NOTE 1: 50-012-08N400 UNION ASSY, 50-012-01N404 INSERT AND 50-012-02N400 CAP AS A UNIT REPLACES ZY400C CAP AND ZY6054 INSERT AS A UNIT.			



206A/B/B3-95-1007-1
C0000

Figure 95-7. Piping installation, pitot/static and engine (S/N 1414 thru sub) (Sheet 1 of 2)



206A/B/B3-95-1007-2
C0000

Figure 95-7. Piping installation, pitot/static and engine (S/N 1414 thru sub) (Sheet 2)

(1) INDEX NUMBER	(2) PART NUMBER	(3) ITEM NAME	(4) UNIT PER ASSY	(5) A V A I L	(6) U O C
		FIGURE: 95-7. Piping installation, pitot/static and engine (S/N 1414 thru sub)			
	206-070-898-007	PIPING INSTL, PITOT/STATIC AND ENGINE (SEE FIG. 8 . FOR BALANCE OF BREAKDOWN)	1		
	206-070-898-103	PIPING INSTL, PITOT/STATIC AND ENGINE (SEE FIG. 8 . FOR BALANCE OF BREAKDOWN)	1		
	206-070-898-107	PIPING INSTL, PITOT/STATIC AND ENGINE (SEE FIG. 8 . FOR BALANCE OF BREAKDOWN)	1		
1	PH500	.PITOT TUBE (REPLACED BY AN5813-1)	1		
1	AN5813-1	.PITOT TUBE (REPLACES PH500)	1	1	
2	50-012-19N400	.UNION ASSY	1	1	A
3	MS21042L3	.NUT	1	1	A
3A	NAS1149D0332J	.WASHER	3		A
4	MS27039-1-24	.SCREW (REPLACED BY MS27039-1-25)	1	1	A
4	MS27039-1-25	.SCREW (REPLACES MS27039-1-24)	1	1	A
5	NAS43DD3-64	.SPACER	1		A
6	MS25281R9	.CLAMP (REPLACED BY MS25281-R9)	1		A
6	MS25281-R9	.CLAMP (REPLACES MS25281R9)	1	1	A
7	MS21042L3	.NUT	2	1	B
8	NAS1149D0332J	.WASHER	5		B
9	NAS43DD3-16	.SPACER	1		B
10	MS27039-1-10	.SCREW	1	1	B
11	MS27039-1-12	.SCREW	1	1	B
12	AN743-12	.BRACKET	1	1	B
13	MS25281-R4	.CLAMP	2	1	B
14	262-N-1/4	.UNION (REPLACED BY 50-012-08N400)	1		A
14	50-012-08N400	.UNION ASSY (REPLACES 262-N-1/4)	1	1	A
15	259-N-1/4	.INSERT (REPLACED BY 50-012-01N404)	1		A
15	50-012-01N404	.INSERT (REPLACES 259-N-1/4)	1	1	A
16	206-070-898-035	.TUBE ASSY	1	1	A
16	206-077-508-101	.TUBE ASSY	1	1	B
17	206-070-898-025	.TUBE ASSY	1	1	A
17	206-070-507-101	.TUBE ASSY	1		B
18	NAS679A3	.NUT (REPLACED BY MS21042L3)	6		
18	MS21042L3	.NUT (REPLACES NAS679A3)	6	1	
19	AN520-10R8	.SCREW (REPLACED BY MS35207-263)	6		
19	MS35207-263	.SCREW (REPLACES AN520-10R8)	6	1	
20	MS25281R4	.CLAMP (REPLACED BY MS25281-R4)	6	0	
20	MS25281-R4	.CLAMP (REPLACES MS25281R4)	6	1	
21	MS35489-7	.GROMMET	10	1	
22	206-070-898-021	.TUBE	1	1	
23	206-070-898-023	.TUBE	1	1	
24	264-N-1/4	.UNION-TEE ASSY (REPLACED BY 50-012-15N400)	1		
24	50-012-15N400	.UNION-TEE ASSY (REPLACES 264-N-1/4)	1	1	
25	259-N-1/4	.INSERT (REPLACED BY 50-012-01N404)	3		
25	50-012-01N404	.INSERT (REPLACES 259-N-1/4)	3	1	
26	MS21912D4	.TEE (REPLACED BY MS21912W4)	2		
26	MS21912W4	.TEE (REPLACES MS21912D4)	2	1	
27	AN924-4D	.NUT	2	1	
28	AN960PD716	.WASHER (REPLACED BY AN960JD716)	2		

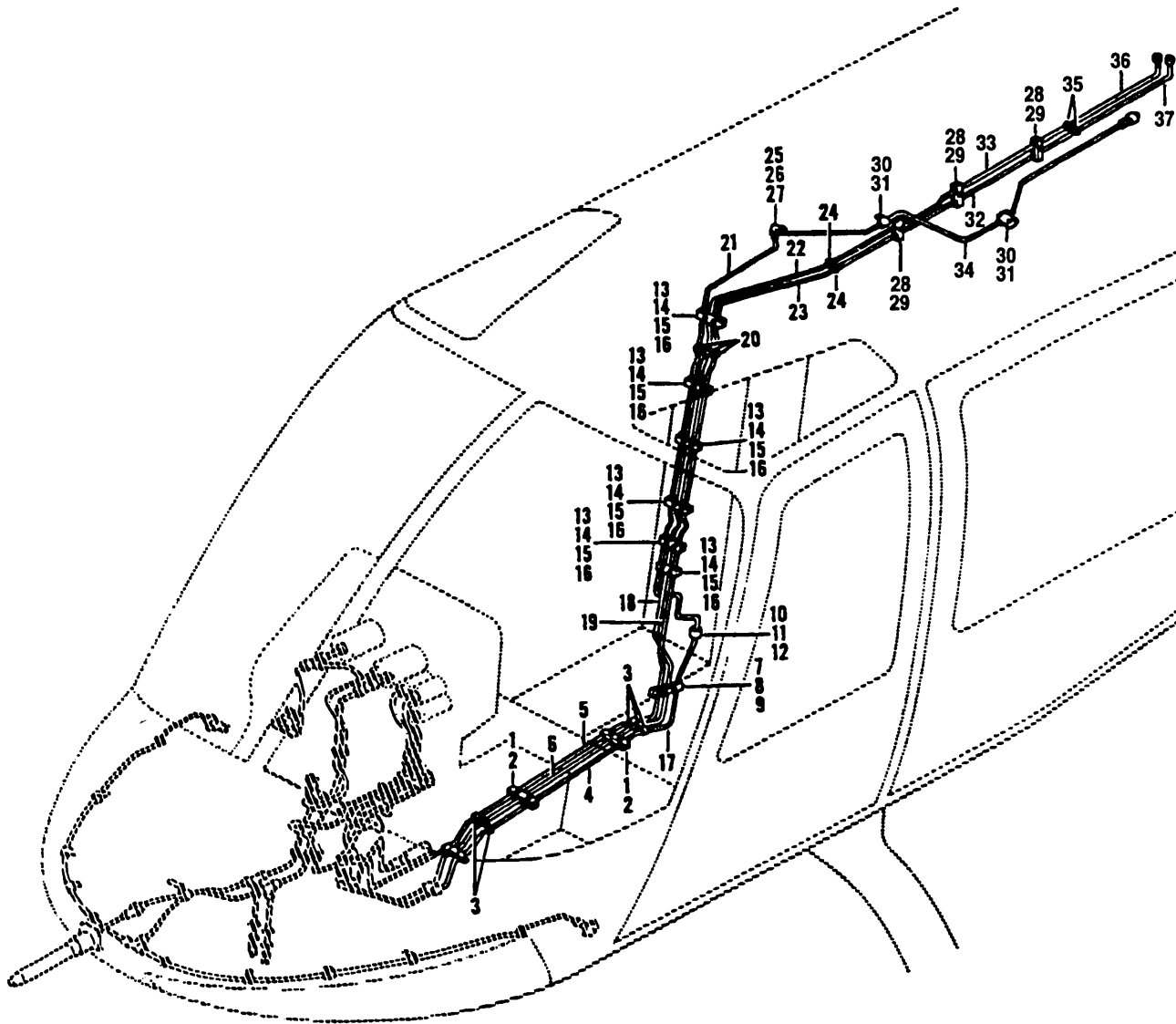
(1) INDEX NUMBER	(2) PART NUMBER	(3) ITEM NAME	(4) UNIT PER ASSY	(5) A V A I L	(6) U O C
		FIGURE: 95-7. Piping installation, pitot/static and engine (S/N 1414 thru sub) (Cont'd)			
28	AN960JD716	.WASHER (REPLACES AN960PD716) (REPLACED BY NAS1149D0763J)	2	1	
28	NAS1149D0763J	.WASHER (REPLACES AN960JD716)	2		
29	261-N-1/4	.NUT (REPLACED BY 50-012-06N400)	6		
29	50-012-06N400	.NUT ASSY (REPLACES 261-N-1/4)	6	1	
30	259-N-1/4	.INSERT (REPLACED BY 50-012-01N404)	6		
30	50-012-01N404	.INSERT (REPLACES 259-N-1/4)	6	1	
31	206-070-898-033	.TUBE	1	1	
32	206-070-898-039	.TUBE	1	1	
33	ZY400C	.CAP ASSY (NOTE 1) (REPLACED BY NY400C)	2	0	
33	NY400C	.CAP ASSY (NOTE 1) (REPLACES ZY400C)	2	6	
34	ZY605-4	.INSERT (NOTE 1) (REPLACED BY NY605-4)	2	0	
34	NY605-4	.INSERT (NOTE 1) (REPLACES ZY605-4)	2	6	
35	50-012-08N400	.UNION ASSY (NOTE 1)	2	1	
36	50-012-01N400	.INSERT (NOTE 1)	2		
37	50-012-02N400	.CAP (NOTE 1)	2	1	
38	206-070-695-001	.DECAL (STATIC DRAIN)	1	1	
39	206-070-694-001	.DECAL (PITOT DRAIN)	1	1	
40	206-070-693-001	.DECAL (STATIC)	2	1	
41	206-070-692-001	.DECAL (PITOT)	2	1	
42	206-070-898-049	.TUBE	1	1	
43	206-070-898-051	.TUBE	1	1	
44	AN837-4D	.ELBOW	1	1	
45	AN941D4	.ELBOW	1	1	
46	AN960JD716L	.WASHER (REPLACED BY NAS1149D0716J)	1	1	
46	NAS1149D0716J	.WASHER (REPLACES AN960JD716L)	1		
47	AN924-4D	.NUT	2	1	
48	50-012-08N400	.UNION ASSY	1	1	
49	MS28778-4	.PACKING, PREFORMED	2	1	
50	AN837-4D	.ELBOW	1	1	A
51	AN941D4	.ELBOW	1	1	A
52	AN960JD716L	.WASHER (REPLACED BY NAS1149D0716J)	1	1	A
52	NAS1149D0716J	.WASHER (REPLACES AN960JD716L)	1		A
53	AN924-4D	.NUT	2	1	A
54	50-012-08N400	.UNION ASSY	1	1	A
55	MS28778-4	.PACKING, PREFORMED	2	1	A
56	AN929-4	.CAP	2	1	B
57	212-070-173-003	.ADAPTER	1	1	B
58	AN941D4	.ELBOW	1	1	B
59	MS28778-4	.PACKING, PREFORMED	1	1	B
60	AN924-D4	.NUT	1		B
61	AN960JD716	.WASHER (REPLACED BY NAS1149D0763J)	1	1	B
61	NAS1149D0763J	.WASHER (REPLACES AN960JD716)	1		B
61A	AN924-4D	.NUT	1	1	G
61B	NAS1149D0716J	.WASHER	1		G
62	NAS617-4	.PACKING, PREFORMED (REPLACED BY M83248/1-904)	1		B
62	M83248/1-904	.PACKING, PREFORMED (REPLACES NAS617-4)	1	1	B
63	7M522-4D	.FITTING	1	6	B
64	MS21042L3	.NUT	1	1	

(1) INDEX NUMBER	(2) PART NUMBER	(3) ITEM NAME	(4) UNIT PER ASSY	(5) A V A I L	(6) U O C
FIGURE: 95-7. Piping installation, pitot/static and engine (S/N 1414 thru sub) (Cont'd)					
65	AN960PD10L	.WASHER (REPLACED BY AN960JD10L)	2		
65	AN960JD10L	.WASHER (REPLACES AN960PD10L) (REPLACED BY NAS1149D0332J)	2		
65	NAS1149D0332J	.WASHER (REPLACES AN960JD10L)	2		
66	MS27039-1-10	.SCREW	1	1	
67	MS25281R7	.CLAMP (REPLACED BY MS25281-R7)	2		
67	MS25281-R7	.CLAMP (REPLACES MS25281R7)	2	1	
68	AN6270-4D0244	.HOSE ASSY	1	1	
69	AN6270-4D0234	.HOSE ASSY	1	1	
70	AN816-4D	.ADAPTER	1	1	
71	206-075-631-001	.TUBE ASSY (REPLACED BY 206-075-039-101)	1		
71	206-075-039-101	.TUBE ASSY (REPLACES 206-075-631-001)	1	1	
72	206-075-634-001	.TUBE ASSY (REPLACED BY 206-075-774-101)	1	6	
72	206-075-774-101	.TUBE ASSY (REPLACES 206-075-634-001)	1	1	
73	AN826-4D	.TEE (REPLACED BY MS20826-4D)	2		C
73	MS20826-4D	.TEE (REPLACES AN826-4D)	2	1	C
74	212-070-173-001	.ADAPTER	2	1	D
75	MS21900D4	.ADAPTER (REPLACED BY MS21900W4)	4		D
75	MS21900W4	.ADAPTER (REPLACES MS21900D4)	4	1	D
76	MS28778-4	.PACKING, PREFORMED	6	1	D
77	AN938D4	.TEE	2	1	D
78	AN929-4	.CAP	1	1	
79	AN924-4D	.NUT	1	1	
80	AN960PD716	.WASHER (REPLACED BY AN960JD716)	1		
80	AN960JD716	.WASHER (REPLACES AN960PD716) (REPLACED BY NAS1149D0763J)	1	1	
80	NAS1149D0763J	.WASHER (REPLACES AN960JD716)	1		
81	AN833-4D	.ELBOW	1	1	
82	MS21042L3	.NUT	2	1	
83	AN960PD10L	.WASHER (REPLACED BY AN960JD10L)	2		
83	AN960JD10L	.WASHER (REPLACES AN960PD10L) (REPLACED BY NAS1149D0332J)	2		
83	NAS1149D0332J	.WASHER (REPLACES AN960JD10L)	2		
84	MS24693S272	.SCREW (REPLACED BY MS24693-S272)	2		
84	MS24693-S272	.SCREW (REPLACES MS24693S272)	2	1	
85	206-075-237-001	.BRACKET	1	1	
86	206-075-625-001	.TUBE ASSY	1	1	
87	206-075-627-001	.TUBE ASSY	1	1	
88	206-075-626-001	.TUBE ASSY	1	1	
89	AN816-3D	.NIPPLE	3	1	
90	MS21042L3	.NUT	2	1	
91	AN960PD10L	.WASHER (REPLACED BY AN960JD10L)	4		
91	AN960JD10L	.WASHER (REPLACES AN960PD10L) (REPLACED BY NAS1149D0332J)	4		
91	NAS1149D0332J	.WASHER (REPLACES AN960JD10L)	4		
92	MS27039-1-10	.SCREW	2	1	
93	MS25281R6	.CLAMP (REPLACED BY MS25281-R6)	4	1	
93	MS25281-R6	.CLAMP (REPLACES MS25281R6)	4	1	
94	AN6270-3D0150	.HOSE ASSY	3		

(1) INDEX NUMBER	(2) PART NUMBER	(3) ITEM NAME	(4) UNIT PER ASSY	(5) A V A I L	(6) U O C
		FIGURE: 95-7. Piping installation, pitot/static and engine (S/N 1414 thru sub) (Cont'd)			
95	AN924-3D	.NUT	3	1	
96	AN960PD616	.WASHER (REPLACED BY AN960JD616)	3		
96	AN960JD616	.WASHER (REPLACES AN960PD616) (REPLACED BY NAS1149D0663J)	3		
96	NAS1149D0663J	.WASHER (REPLACES AN960JD616)	3		
97	AN833-3D	.ELBOW	3	1	
98	MS21042L3	.NUT	2	1	
99	AN960PD10L	.WASHER (REPLACED BY AN960JD10L)	4		
99	AN960JD10L	.WASHER (REPLACES AN960PD10L) (REPLACED BY NAS1149D0332J)	4		
99	NAS1149D0332J	.WASHER (REPLACES AN960JD10L)	4		
100	MS27039-1-30	.SCREW	2	1	C
100	MS24693-S284	.SCREW	2		D
101	NAS43DD3-96	.SPACER (REPLACED BY NAS43DD3-96N)	2		
101	NAS43DD3-96N	.SPACER (REPLACES NAS43DD3-96)	2	1	
102	206-075-237-003	.BRACKET	1	1	
103	206-075-628-001	.TUBE ASSY	1	1	
104	206-075-630-001	.TUBE ASSY	1	1	
105	206-075-629-001	.TUBE ASSY	1	1	
106	AN924-3D	.NUT	3	1	
107	AN960PD616	.WASHER (REPLACED BY AN960JD616)	3		
107	AN960JD616	.WASHER (REPLACES AN960PD616) (REPLACED BY NAS1149D0663J)	3		
107	NAS1149D0663J	.WASHER (REPLACES AN960JD616)	3		
108	AN837-3D	.ELBOW	3	1	
109	MS21042L3	.NUT	2	1	
110	AN960PD10L	.WASHER (REPLACED BY AN960JD10L)	2		
110	AN960JD10L	.WASHER (REPLACES AN960PD10L) (REPLACED BY NAS1149D0332J)	2		
110	NAS1149D0332J	.WASHER (REPLACES AN960JD10L)	2		
111	MS27039-1-08	.SCREW	2	1	
112	206-075-237-005	.BRACKET	1	1	
113	20-042-5-8	.RADIUS BLOCK	2		
114	206-070-745-001	.TUBE ASSY, TRANSMISSION	1	1	
115	206-070-750-001	.TUBE ASSY, TORQUE	1	1	
116	MS27039-0810	.SCREW	2	1	
117	206-070-190-003	.CLAMP	2	1	
118	206-070-744-001	.TUBE ASSY, TRANSMISSION	1	1	
119	206-070-747-001	.TUBE ASSY, ENGINE	1	1	
120	AN924-4D	.NUT	2	1	
121	AN894D4-3	.BUSHING	1	1	
122	MS28778-4	.PACKING, PREFORMED	2	1	
123	AN832-4D	.UNION	1	1	
124	204-040-376-003	.SWITCH, TRANSMISSION	1	1	
125	AN924-3D	.NUT	1	1	
126	AN960PD616	.WASHER (REPLACED BY AN960JD616)	1		
126	AN960JD616	.WASHER (REPLACES AN960PD616) (REPLACED BY NAS1149D0663J)	1		
126	NAS1149D0663J	.WASHER (REPLACES AN960JD616)	1		

(1) INDEX NUMBER	(2) PART NUMBER	(3) ITEM NAME	(4) UNIT PER ASSY	(5) A V A I L	(6) U O C
FIGURE: 95-7. Piping installation, pitot/static and engine (S/N 1414 thru sub) (Cont'd)					
127	AN804D3	.TEE	1	1	
128	AN924-3D	.NUT	2	1	
129	AN960PD616	.WASHER (REPLACED BY AN960JD616)	2		
129	AN960JD616	.WASHER (REPLACES AN960PD616) (REPLACED BY NAS1149D0663J)	2		
129	NAS1149D0663J	.WASHER (REPLACES AN960JD616)	2		
130	AN832-3D	.UNION	2	1	
131	MS21042L3	.NUT	4	1	
132	AN960PD10L	.WASHER (REPLACED BY AN960JD10L)	4		
132	AN960JD10L	.WASHER (REPLACES AN960PD10L) (REPLACED BY NAS1149D0332J)	4		
132	NAS1149D0332J	.WASHER (REPLACES AN960JD10L)	4		
133	MS27039-1-08	.SCREW	4	1	C
134	MS27039-1-12	.SCREW	1	1	D
135	MS27039-1-09	.SCREW	1	1	D
136	MS27039-1-07	.SCREW	2	1	D
137	AN743-12	.BRACKET	2	1	
138	MS25281R3	.CLAMP (REPLACED BY MS25281-R3)	3		
138	MS25281-R3	.CLAMP (REPLACES MS25281R3)	3	1	
139	261-N-1/4	.NUT (REPLACED BY 50-012-06N400)	2		
139	50-012-06N400	.NUT ASSY (REPLACES 261-N-1/4)	2	1	
140	259-N-1/4	.INSERT (REPLACED BY 50-012-01N404)	2		
140	50-012-01N404	.INSERT (REPLACES 259-N-1/4)	2	1	
141	ZY400P	.CAP (REPLACED BY NY400P)	2	0	
141	NY400P	.CAP (REPLACES ZY400P)	2	0	
142	NAS551-4D	.BOLT	2	1	
143	MS28778-4	.PACKING, PREFORMED	4	1	
144	NAS1240A4	.TEE	2	1	
145	AN924-8D	.NUT	2	1	
146	AN960PD1216	.WASHER (REPLACED BY AN960JD1216)	2	6	
146	AN960JD1216	.WASHER (REPLACES AN960PD1216) (REPLACED BY NAS1149D1063J)	2	1	
146	NAS1149D1063J	.WASHER (REPLACES AN960JD1216)	2		
147	206-070-539-001	.BAFFLE	2	1	
148	206-070-122-003	.PORT, STATIC (REPLACED BY 206-070-122-101)	2		E
148	206-070-122-101	.PORT, STATIC (REPLACES 206-070-122-003)	2	1	EF
<p>NOTE 1: 50-012-08N400 UNION ASSY, 50-012-01N404 INSERT AND 50-012-02N400 CAP AS A UNIT REPLACE NY605-4 INSERT AND NY400-C CAP ASSY AS A UNIT</p>					

(1) INDEX NUMBER	(2) PART NUMBER	(3) ITEM NAME	(4) UNIT PER ASSY	(5) A V A I L	(6) U O C																								
		<p>FIGURE: 95-7. Piping installation, pitot/static and engine (S/N 1414 thru sub) (Cont'd)</p> <p style="text-align: center;">USABLE ON CODES</p> <table border="0" style="width: 100%;"> <thead> <tr> <th style="text-align: left;">CODE</th> <th style="text-align: left;">MODEL</th> <th style="text-align: left;">SERIAL NUMBER</th> </tr> </thead> <tbody> <tr> <td>A</td> <td>206B/BIII</td> <td>1414 - 4310</td> </tr> <tr> <td>B</td> <td>206BIII</td> <td>4311 - SUB</td> </tr> <tr> <td>C</td> <td>206B/BIII</td> <td>1414 - 3789</td> </tr> <tr> <td>D</td> <td>206BIII</td> <td>3790 - SUB</td> </tr> <tr> <td>E</td> <td>206B/BIII</td> <td>1414 - 4181</td> </tr> <tr> <td>F</td> <td>206BIII</td> <td>4182 - SUB</td> </tr> <tr> <td>G</td> <td>206BIII</td> <td>4489 - SUB</td> </tr> </tbody> </table> <p>1) UNLESS A USABLE ON PART NUMBER IS LISTED IN THE ITEM NAME COLUMN; NO CODE INDICATES THE PART APPLIES TO ALL SERIAL NUMBERS.</p> <p>2) IF THE SERIAL NUMBER IS BLANK THE PART APPLIES TO ALL SERIAL NUMBERS FOR THAT MODEL.</p>	CODE	MODEL	SERIAL NUMBER	A	206B/BIII	1414 - 4310	B	206BIII	4311 - SUB	C	206B/BIII	1414 - 3789	D	206BIII	3790 - SUB	E	206B/BIII	1414 - 4181	F	206BIII	4182 - SUB	G	206BIII	4489 - SUB			
CODE	MODEL	SERIAL NUMBER																											
A	206B/BIII	1414 - 4310																											
B	206BIII	4311 - SUB																											
C	206B/BIII	1414 - 3789																											
D	206BIII	3790 - SUB																											
E	206B/BIII	1414 - 4181																											
F	206BIII	4182 - SUB																											
G	206BIII	4489 - SUB																											

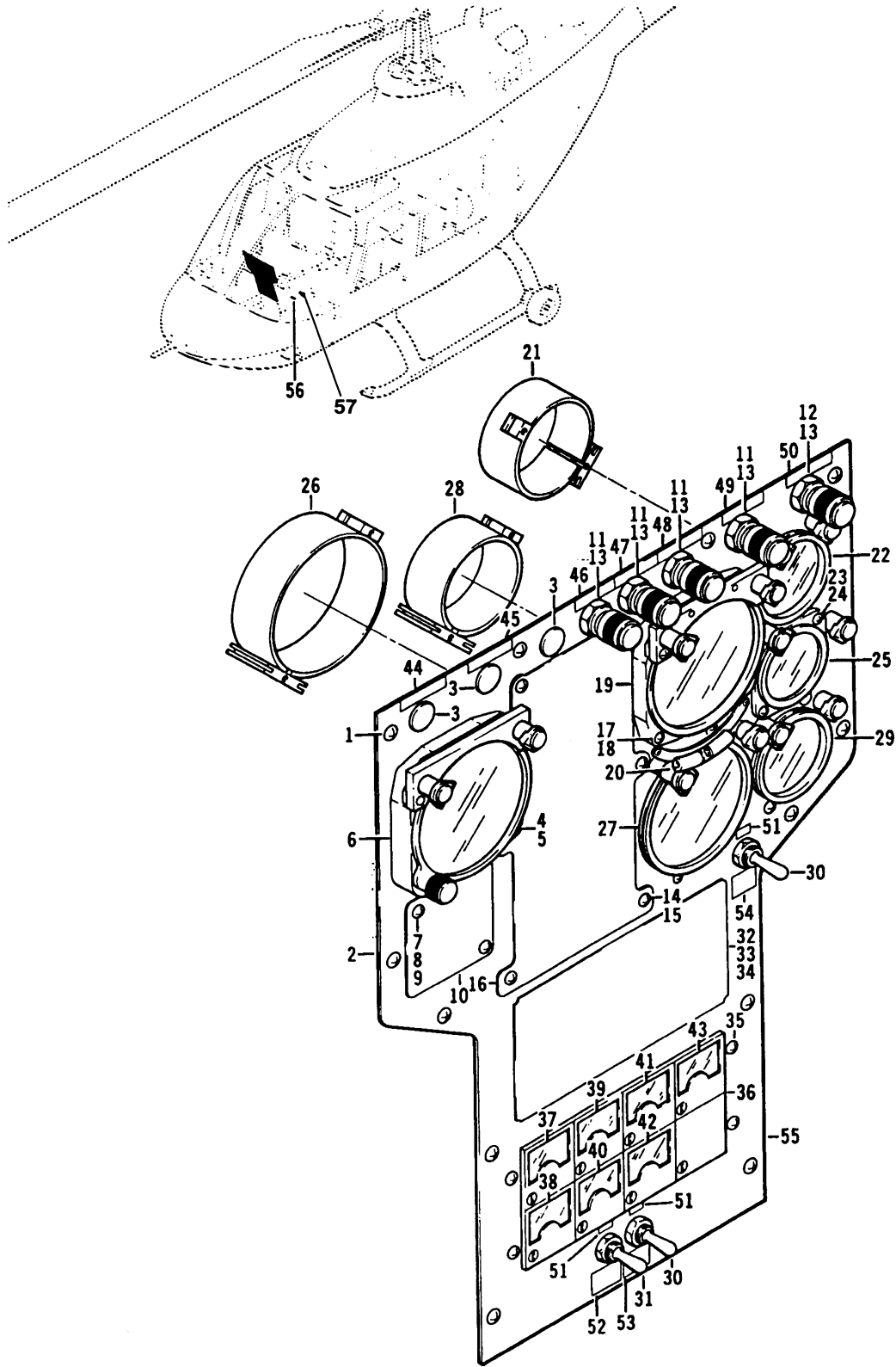


206A/B/B3-95-1008
C0000

Figure 95-8. Piping installation, pitot/static and engine

(1) INDEX NUMBER	(2) PART NUMBER	(3) ITEM NAME	(4) UNIT PER ASSY	(5) A V A I L	(6) U O C
		FIGURE: 95-8. Piping installation, pitot/static and engine (S/N 1414 thru sub)			
	206-070-898-007	PIPING INSTL, PITOT/STATIC AND ENGINE (SEE FIG. 7 . FOR BALANCE OF BREAKDOWN)	REF		
	206-070-898-103	PIPING INSTL, PITOT/STATIC AND ENGINE (SEE FIG. 7 . FOR BALANCE OF BREAKDOWN)	REF		
	206-070-898-107	PIPING INSTL, PITOT/STATIC AND ENGINE (SEE FIG. 7 . FOR BALANCE OF BREAKDOWN)	REF		
1	MS27039-0810	.SCREW	4	1	
2	206-070-190-003	.CLAMP	4	1	
3	AN815-3D	.UNION	6	1	
4	206-070-453-001	.TUBE ASSY, OIL, TRANSMISSION	1	1	
5	206-070-450-001	.TUBE ASSY, TORQUE, ENGINE	1	1	
6	206-070-446-001	.TUBE ASSY, OIL, ENGINE	1	1	
7	MS21042L08	.NUT	2	1	
8	MS27039-0810	.SCREW	2	1	
9	206-070-190-003	.CLAMP	2	1	
10	MS21042L3	.NUT (USBL ON 206-070-898-007)	1	1	
11	MS27039-1-08	.SCREW	1	1	
12	MS25281R3	.CLAMP (REPLACED BY MS25281-R3)	1		
12	MS25281-R3	.CLAMP (REPLACES MS25281R3)	1	1	
13	90-003-20	.NUT	12	1	
14	AN960JD8	.WASHER (REPLACED BY NAS1149DN832J)	12	1	
14	NAS1149DN832J	.WASHER (REPLACES AN960JD8)	12		
15	MS27039-0810	.SCREW	12	1	
16	206-070-190-003	.CLAMP	12	1	
17	206-070-184-001	.TUBE ASSY, OIL, TRANSMISSION (REPLACED BY 206-075-671-001)	1		A
17	206-075-671-001	.TUBE ASSY, OIL, TRANSMISSION (REPLACES 206-070-184-001)	1	1	
18	206-070-180-001	.TUBE ASSY, OIL, ENGINE	1	1	
19	206-070-176-001	.TUBE ASSY, TORQUE, ENGINE	1	1	
20	AN815-3D	.UNION	3	1	
21	206-070-528-001	.TUBE ASSY, OIL, TRANSMISSION	1	1	
22	206-070-445-001	.TUBE ASSY, OIL, ENGINE	1	1	
23	206-070-449-001	.TUBE ASSY, TORQUE, ENGINE	1	1	
24	AN815-3D	.UNION	2	1	
25	AN924-3D	.NUT	1	1	
26	AN960PD616	.WASHER (REPLACED BY AN960JD616)	1		
26	AN960JD616	.WASHER (REPLACES AN960PD616) (REPLACED BY NAS1149D0663J)	1		
26	NAS1149D0663J	.WASHER (REPLACES AN960JD616)	1		
27	AN833-3D	.ELBOW	1	1	
28	MS27039-0810	.SCREW	6	1	C
28	MS24694-S8	.SCREW	3		D
29	206-070-190-001	.CLAMP	6	1	
30	MS27039-1-07	.SCREW	2	1	
31	MS21919WDG3	.CLAMP (REPLACED BY MS21919WDG3)	2		
31	MS21919WDG3	.CLAMP (REPLACES MS21919WDG3)	2	1	
32	206-070-530-001	.TUBE ASSY, TORQUE, ENGINE	1	1	
33	206-070-911-001	.TUBE ASSY, OIL, ENGINE	1	1	

(1) INDEX NUMBER	(2) PART NUMBER	(3) ITEM NAME	(4) UNIT PER ASSY	(5) A V A I L	(6) U O C															
		FIGURE: 95-8. Piping installation, pitot/static and engine (S/N 1414 thru sub) (Cont'd)																		
34	206-070-452-001	.TUBE ASSY, OIL, TRANSMISSION	1	1																
35	AN815-3D	.UNION	2	1																
36	206-075-015-001	.TUBE ASSY, OIL, ENGINE (REPLACED BY 206-075-663-001)	1	1	B															
36	206-075-663-001	.TUBE ASSY, OIL, ENGINE (REPLACES 206-075-015-001)	1	1																
37	206-075-014-001	.TUBE ASSY, TORQUE, ENGINE (REPLACED BY 206-075-662-001)	1	0	B															
37	206-075-662-001	.TUBE ASSY, TORQUE, ENGINE (REPLACES 206-075-014-001)	1	1																
<p>USABLE ON CODES</p> <table border="0" style="margin-left: auto; margin-right: auto;"> <thead> <tr> <th style="text-align: left;">CODE</th> <th style="text-align: left;">MODEL</th> <th style="text-align: left;">SERIAL NUMBER</th> </tr> </thead> <tbody> <tr> <td>A</td> <td>206B</td> <td>1414 - 1822</td> </tr> <tr> <td>B</td> <td>206B</td> <td>1414 - 1750</td> </tr> <tr> <td>C</td> <td>206B/BIII</td> <td>1414 - 4430</td> </tr> <tr> <td>D</td> <td>206BIII</td> <td>4431 - SUB</td> </tr> </tbody> </table> <p>1) UNLESS A USABLE ON PART NUMBER IS LISTED IN THE ITEM NAME COLUMN; NO CODE INDICATES THE PART APPLIES TO ALL SERIAL NUMBERS .</p> <p>2) IF THE SERIAL NUMBER IS BLANK THE PART APPLIES TO ALL SERIAL NUMBERS FOR THAT MODEL .</p>						CODE	MODEL	SERIAL NUMBER	A	206B	1414 - 1822	B	206B	1414 - 1750	C	206B/BIII	1414 - 4430	D	206BIII	4431 - SUB
CODE	MODEL	SERIAL NUMBER																		
A	206B	1414 - 1822																		
B	206B	1414 - 1750																		
C	206B/BIII	1414 - 4430																		
D	206BIII	4431 - SUB																		



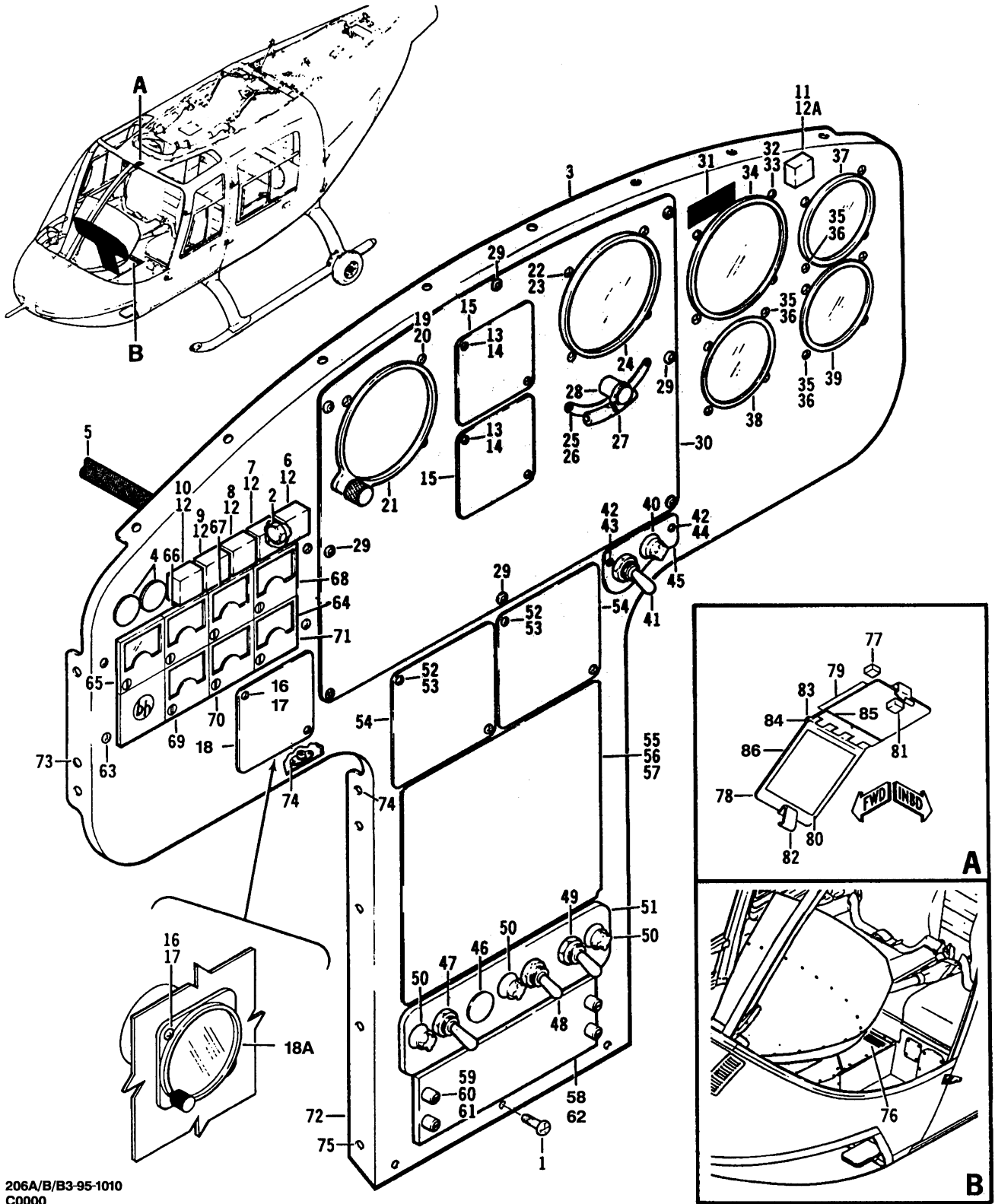
206A/B/B3-95-1009
C0000

Figure 95-9. Panel installation, instrument (S/N 4 thru 153)

(1) INDEX NUMBER	(2) PART NUMBER	(3) ITEM NAME	(4) UNIT PER ASSY	(5) A V A I L	(6) U O C
		FIGURE: 95-9. Panel installation, instrument (S/N 4 thru 153)			
	206-070-240-001	PANEL INSTL, INSTRUMENT	1		
1	AN520B10R7	..SCREW	12	1	
2	206-070-240-003	..PANEL ASSY	1		
3	BS51074K2215	..PLUG BUTTON	3	0	
4	NAS487-13	..NUT (REPLACED BY MS33737-9C)	4		
4	MS33737-9C	..NUT (REPLACES NAS487-13)	4	0	
5	AN515B6R16	..SCREW (REPLACED BY MS35214-31)	4		
5	MS35214-31	..SCREW (REPLACES AN515B6R16)	4	1	
6	22-373-01-1A	..ALTIMETER (REPLACED BY 22-374B01)	1	6	
6	22-374B01	..ALTIMETER (REPLACES 22-373-01-1A)	1		
		(ALTERNATE PARTS)			
6	23-374B-01	..ALTIMETER	1		
6	47-711-030-1	..ALTIMETER	1		
7	NAS679A06	..NUT (REPLACED BY MS21042L06)	2	1	
7	MS21042L06	..NUT (REPLACES NAS679A06)	2	1	
8	AN960PD6L	..WASHER (REPLACED BY AN960JD6L)	2		
8	AN960JD6L	..WASHER (REPLACES AN960PD6L) (REPLACED BY NAS1149DN616J)	2	1	
8	NAS1149DN616J	..WASHER (REPLACES AN960JD6L)	2	1	
9	AN515B6R6	..SCREW (REPLACED BY MS35214-25)	2		
9	MS35214-25	..SCREW (REPLACES AN515B6R6)	2	1	
10	206-070-198-037	..COVER	1	1	
11	MS25041-4	..INDICATOR LIGHT	4	1	
12	MS25041-2	..INDICATOR LIGHT	1	1	
13	MS25237-327	..LAMP (REPLACED BY M6363/8-5)	5		
13	M6363/8-5	..LAMP (REPLACES MS25237-327)	5		
14	AN515B8R6	..SCREW	6		
15	AN960PD8L	..WASHER (REPLACED BY AN960JD8L)	6		
15	AN960JD8L	..WASHER (REPLACES AN960PD8L) (REPLACED BY NAS1149DN816J)	6	1	
15	NAS1149DN816J	..WASHER (REPLACES AN960JD8L)	6		
16	206-070-154-001	..COVER	1		
17	NAS487-13	..NUT (REPLACED BY MS33737-9C)	4		
17	MS33737-9C	..NUT (REPLACES NAS487-13)	4	0	
18	AN515B6R16	..SCREW (REPLACED BY MS35214-31)	4		
18	MS35214-31	..SCREW (REPLACES AN515B6R16)	4	1	
19	22-697-06-1	..INDICATOR, AIRSPEED	1		
		(ALTERNATE PART)			
19	90-10025	..INDICATOR, AIRSPEED (REPLACED BY 20018-01104)	1		
19	20018-01104	..INDICATOR, AIRSPEED (REPLACES 90-10025)	1	6	
20	23-320-01	..INCLINOMETER, BALL BANK	1	1	
21	MS28042-1A	..CLAMP	1		
22	206-070-242-001	..INDICATOR, TURBINE OUTLET TEMPERATURE (PRE SI 206-80) (NOTE 1)	1	1	
22	206-070-242-003	..INDICATOR, TURBINE OUTLET TEMPERATURE (POST SI 206-80) (PRE SI 206-112)	1	1	
22	206-075-709-001	..INDICATOR, TURBINE OUTLET TEMPERATURE (POST SI 206-112)	1	0	
23	NAS487-13	..NUT (REPLACED BY MS33737-9C)	2		

(1) INDEX NUMBER	(2) PART NUMBER	(3) ITEM NAME	(4) UNIT PER ASSY	(5) A V A I L	(6) U O C
FIGURE: 95-9. Panel installation, instrument (S/N 4 thru 153) (Cont'd)					
23	MS33737-9C	..NUT (REPLACES NAS487-13)	2	0	
24	AN515B6R10	..SCREW (REPLACED BY MS35214-28)	2		
24	MS35214-28	..SCREW (REPLACES AN515B6R10)	2	1	
25	22-111-02	..TORQUE METER (PRE SI 206-80) (NOTE 1)	1	1	
25	206-070-989-001	..TORQUE METER (POST SI 206-80)	1	1	
26	MS28042-2A	..CLAMP (REPLACED BY 18114-2)	1		
26	18114-2	..CLAMP (REPLACES MS28042-2A) (REPLACED BY 30-058-3)	1	0	
26	30-058-3	..CLAMP (REPLACES 18114-2)	1	1	
27	206-070-241-001	..INDICATOR, DUAL TACHOMETER	1	1	
28	MS28042-1A	..CLAMP	1		
29	206-070-243-001	..INDICATOR, GAS PRODUCER (PRE SI 206-80) (NOTE . . 1)	1	1	
29	206-070-243-003	..INDICATOR, GAS PRODUCER (POST SI 206-80)	1	1	
30	MS24658-23F	..SWITCH	2	1	
31	MS24659-23G	..SWITCH	1	1	
32	AN520B10R7	..SCREW	2	1	
33	AN960PD10	..WASHER (REPLACED BY AN960JD10)	2		
33	AN960JD10	..WASHER (REPLACES AN960PD10) (REPLACED BY NAS1149D0363J)	2		
33	NAS1149D0363J	..WASHER (REPLACES AN960JD10)	2		
34	206-070-198-013	..COVER	1	6	
35	AN515B6R6	..SCREW (REPLACED BY MS35214-25)	4		
35	MS35214-25	..SCREW (REPLACES AN515B6R6)	4	1	
36	22-169-018LBW5	..INSTRUMENT CLUSTER (PRE SI 206-80) (NOTE 1)	1	6	
36	206-070-988-001	..INSTRUMENT CLUSTER (POST SI 206-80) (REPLACED . . BY 206-070-988-003)	1		
36	206-070-988-003	..INSTRUMENT CLUSTER (POST SI 206-80) (REPLACES . . 206-070-988-001)	1		
37	169P910-5L	..GAUGE, ENGINE OIL TEMP (REPLACED BY 169P910-5L-2BW)	1		
37	169P910-5L-2BW	..GAUGE, ENGINE OIL TEMP (REPLACES 169P910-5L)	1		
38	169P910-5L1	..GAUGE, XMSN OIL TEMP (REPLACED BY 169P910-5L-3BW)	1		
38	169P910-5L-3BW	..GAUGE, XMSN OIL TEMP (REPLACES 169P910-5L1)	1		
39	169P914-5L	..GAUGE, ENGINE OIL PRESS (REPLACED BY 169P914-5L-2BW)	1		
39	169P914-5L-2BW	..GAUGE, ENGINE OIL PRESS (REPLACES 169P914-5L)	1		
40	169P914-5L1	..GAUGE, XMSN OIL PRESS (REPLACED BY 169P914-5L-3BW)	1		
40	169P914-5L-3BW	..GAUGE, XMSN OIL PRESS (REPLACES 169P914-5L1)	1		
41	169P914-6L	..GAUGE, FUEL PRESS (REPLACED BY 169P914-6L-1BW . . AND 169P914-6L-2BW)	1		
41	169P914-6L-1BW	..GAUGE, FUEL PRESS (USBL ON 207-070-988-001) (REPLACES 169P914-6L)	1		
41	169P914-6L-2BW	..GUAGE, FUEL PRESS (USBL ON 206-070-988-003) (REPLACES 169P914-6L)	1		
42	169P910-22L	..GAUGE, FUEL QUANTITY (REPLACED BY 169P910-22L-2BW)	1		

(1) INDEX NUMBER	(2) PART NUMBER	(3) ITEM NAME	(4) UNIT PER ASSY	(5) A V A I L	(6) U O C
		FIGURE: 95-9. Panel installation, instrument (S/N 4 thru 153) (Cont'd)			
42	169P910-22L-2BW	...GAUGE, FUEL QUANTITY (REPLACES 169P910-22L) . . .	1		
43	169P909-1L	...GAUGE, LOADMETER (REPLACED BY 169P909-1LBW) . . .	1		
43	169P909-1LBW	...GAUGE, LOADMETER (REPLACES 169P909-1L)	1		
44	206-070-626-001	..DECAL (HEATER FAIL)	1	1	
45	206-070-626-003	..DECAL (INVERT OUT)	1	1	
46	206-070-626-005	..DECAL (TRANS TEMP)	1	1	
47	206-070-626-007	..DECAL (TRANS PRESS)	1	1	
48	206-070-626-009	..DECAL (FUEL FILTER)	1	1	
49	206-070-626-011	..DECAL (FUEL PUMP)	1	1	
50	206-070-626-013	..DECAL (ENGINE OUT)	1	1	
51	206-070-626-015	..DECAL (ON)	3	1	
52	206-070-626-017	..DECAL (OFF ENGINE DE-ICING)	1	1	
53	206-070-626-019	..DECAL (OFF CONT BOOST)	1	1	
54	206-070-626-021	..DECAL (OFF FUEL VALVE)	1	1	
55	206-070-239-001	..PANEL ASSY	1		
56	206-072-605-001	DECAL (AIRSPEED LIMITATIONS) (POST SI 206-80)	1		
57	206-070-623-007	DECAL (OPERATING LIMITATIONS) (POST SI 206-112) . .	1		
		NOTE 1: EXISTING INDICATOR MAY BE REWORKED INTO THE NEW CONFIGURATION BY ADDING RANGE MARKS AND REIDENTIFYING TO THE NEW NUMBERS EXCEPT TORQUEMETER MAY NOT BE REMARKED.			



206A/B/B3-95-1010
C0000

Figure 95-10. Panel installation, instrument (S/N 154 thru 913)

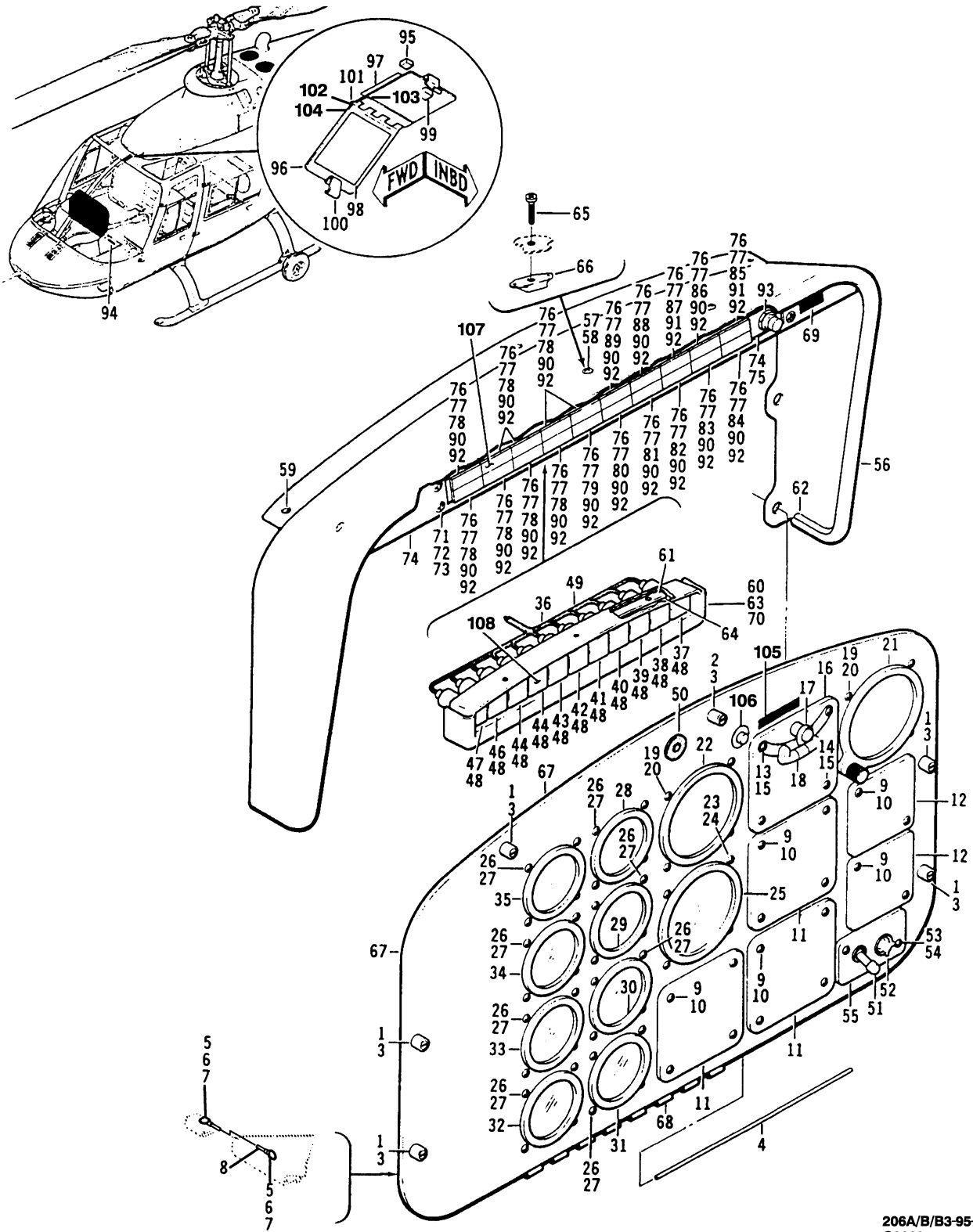
(1) INDEX NUMBER	(2) PART NUMBER	(3) ITEM NAME	(4) UNIT PER ASSY	(5) A V A I L	(6) U O C
		FIGURE: 95-10. Panel installation, instrument (S/N 154 thru 913)			
	206-070-270-001	PANEL INSTL, INSTRUMENT	1		
	206-070-270-005	PANEL INSTL, INSTRUMENT	1		
	206-070-270-013	PANEL INSTL, INSTRUMENT	1		
	206-070-270-017	PANEL INSTL, INSTRUMENT	1		
	206-070-270-009	PANEL INSTL, INSTRUMENT	1		
	206-070-270-021	PANEL INSTL, INSTRUMENT	1		
1	MS27039-1-09	.SCREW	3	1	
2	AN3-4A	.BOLT	2	1	
3	206-070-270-003	.PANEL ASSY	1		A
3	206-070-270-007	.PANEL ASSY	1		B
3	206-070-270-015	.PANEL ASSY	1		C
3	206-070-270-019	.PANEL ASSY	1		D
3	206-070-270-011	.PANEL ASSY	1		E
3	206-070-270-023	.PANEL ASSY	1		F
4	BS51156K2215	..PLUG BUTTON	2		
5	206-075-373-003	..CABLE ASSY, CAUTION LIGHT	1	0	G
5	206-075-373-023	..CABLE ASSY, CAUTION LIGHT	1	6	H
6	SW40352-1	...LIGHT, ENGINE OUT	1	1	
7	SW40352-5	...LIGHT, TRANSMISSION PRESSURE	1	1	
8	SW40352-4	...LIGHT, TRANSMISSION TEMPERATURE	1	1	
9	SW40352-7	...LIGHT, FUEL PUMP	1	1	
10	SW40352-6	...LIGHT, FUEL FILTER	1	1	
11	SW40352-12	...LIGHT, ENGINE CHIP DET. (USBL ON 206-075-373-023)	1	1	H
12	MS25237-327	...LAMP (REPLACED BY M6363/8-5)	5		
12	M6363/8-5	...LAMP (REPLACES MS25237-327)	5		
12A	MS25237-327	...LAMP (USBL ON 206-075-373-023) (REPLACED BY M6363/8-5)	1		H
12A	M6363/8-5	...LAMP (USBL ON 206-075-373-023) (REPLACES MS25237-327)	1		H
13	NAS679A06	..NUT (REPLACED BY MS21042L06)	4	1	J
13	MS21042L06	..NUT (REPLACES NAS679A06)	4	1	J
14	MS35214-25	..SCREW	4	1	J
15	206-070-198-037	..COVER	2	1	J
16	NAS679A06	..NUT (REPLACED BY MS21042L06)	2	1	
16	MS21042L06	..NUT (REPLACES NAS679A06)	2	1	
17	MS35214-25	..SCREW	2	1	J
17	MS35214-29	..SCREW	2	1	K
18	206-070-198-037	..COVER	1	1	J
18A	206-070-275-005	..CLOCK	1	1	K
19	NAS487-21	..NUT (REPLACED BY MS33737-16C)	3		K
19	MS33737-16C	..NUT (REPLACES NAS487-21)	3		K
20	MS35214-29	..SCREW	3	1	K
21	206-070-263-001	..INDICATOR, ALTIMETER	1		A
21	206-070-263-005	..INDICATOR, ALTIMETER	1	1	L
22	NAS487-21	..NUT (REPLACED BY MS33737-16C)	4		K
22	MS33737-16C	..NUT (REPLACES NAS487-21)	4		K
23	MS35214-29	..SCREW	4	1	
24	206-070-264-001	..INDICATOR, AIRSPEED	1	6	A

(1) INDEX NUMBER	(2) PART NUMBER	(3) ITEM NAME	(4) UNIT PER ASSY	(5) A V A I L	(6) U O C
FIGURE: 95-10. Panel installation, instrument (S/N 154 thru 913) (Cont'd)					
24	206-070-264-005	..INDICATOR, AIRSPEED	1	0	L
25	NAS487-20	..NUT (REPLACED BY MS33737-15C)	2		
25	MS33737-15C	..NUT (REPLACES NAS487-20)	2		
26	MS35214-24	..SCREW	2	1	
27	23-320-01	..INCLINOMETER	1	1	
28	A6745BY24	..LIGHT ASSY	1		
29	SFSW8C8DL01GY	..SCREW	8		
30	206-070-277-001	..PANEL ASSY	1		A
30	206-070-277-003	..PANEL ASSY	1		M
30	206-070-398-001	..PANEL ASSY	1		K
31	206-070-624-001	..DECAL (MAXIMUM TURB. 100%, MIN. TURB. 97% ABOVE 8000 FT)	1	0	
32	NAS487-21	..NUT (REPLACED BY MS33737-16C)	4		K
32	MS33737-16C	..NUT (REPLACES NAS487-21)	4		K
33	MS35214-29	..SCREW	4	1	
34	206-070-265-001	..INDICATOR, DUAL TACHOMETER (PRE SI 206-112) (NOTE 2)	1	1	A
34	206-070-265-007	..INDICATOR, DUAL TACHOMETER (PRE SI 206-112) (NOTE 2)	1	0	L
34	206-070-265-011	..INDICATOR, DUAL TACHOMETER (POST SI 206-112)	1		
35	NAS487-20	..NUT (REPLACED BY MS33737-15C)	12		
35	MS33737-15C	..NUT (REPLACES NAS487-20)	12		
36	MS35214-29	..SCREW	12	1	
37	206-070-268-001	..INDICATOR, TORQUEMETER (PRE SI 206-80)	1	6	A
37	206-070-268-009	..INDICATOR, TORQUEMETER (POST SI 206-80)	1	1	A
37	206-070-268-013	..INDICATOR (POST TB 206-08-73-1)	1		A
37	206-070-360-001	..INDICATOR, TORQUEMETER (PRE SI 206-80) (REPLACED BY 206-070-399-001)	1	0	B
37	206-070-399-001	..INDICATOR, TORQUEMETER (PRE SI 206-80) (REPLACES 206-070-360-001)	1	1	N
37	206-070-399-003	..INDICATOR, TORQUEMETER (POST SI 206-80)	1	1	L
38	206-070-266-001	..INDICATOR, GAS PRODUCER TACH (NOTE 2)	1	6	A
38	206-070-266-007	..INDICATOR, GAS PRODUCER TACH (NOTE 2)	1	1	N
38	206-070-266-009	..INDICATOR, GAS PRODUCER TACH (REPLACED BY 206-075-682-109)	1		F
38	206-075-682-109	..INDICATOR (REPLACES 206-070-266-009)	1	1	F
39	206-070-267-001	..INDICATOR, TURBINE OUTLET TEMPERATURE (PRE SI . . . 206-80) (NOTE 2)	1	6	A
39	206-070-267-013	..INDICATOR, TURBINE OUTLET TEMPERATURE (POST SI . . . 206-80) (NOTE 2)	1		A
39	206-070-267-007	..INDICATOR, TURBINE OUTLET TEMPERATURE (PRE SI . . . 206-80) (NOTE 2)	1	1	N
39	206-070-267-011	..INDICATOR, TURBINE OUTLET TEMPERATURE (POST SI . . . 206-80) (PRE SI 206-112) (NOTE 2)	1	1	F
39	206-075-715-001	..INDICATOR, TURBINE OUTLET TEMPERATURE (POST SI . . . 206-112)	1	0	A
39	206-075-715-003	..INDICATOR, TURBINE OUTLET TEMPERATURE (POST SI . . . 206-112)	1	1	L
40	A7165-4-327CE	..LIGHT ASSY (REPLACED BY 90-028-1)	1		

(1) INDEX NUMBER	(2) PART NUMBER	(3) ITEM NAME	(4) UNIT PER ASSY	(5) A V A I L	(6) U O C
		FIGURE: 95-10. Panel installation, instrument (S/N 154 thru 913) (Cont'd)			
40	90-028-1	..LIGHT ASSY (REPLACES A7165-4-327CE)	1	1	
41	MS24658-23F	..SWITCH	1	1	
42	NAS679A06	..NUT (REPLACED BY MS21042L06)	2	1	
42	MS21042L06	..NUT (REPLACES NAS679A06)	2	1	
43	MS35214-26	..SCREW	1	1	
44	MS35214-27	..SCREW	1	1	
45	206-070-259-001	..PANEL	1	1	
46	SS48152K2215	..PLUG BUTTON	1		
47	MS25201-6	..SWITCH	1	1	
48	MS24659-23G	..SWITCH	1	1	
49	MS24658-23F	..SWITCH	1	1	
50	A7165-4-327CE	..LIGHT ASSY (REPLACED BY 90-028-1)	3		
50	90-028-1	..LIGHT ASSY (REPLACES A7165-4-327CE)	3	1	
51	206-070-283-001	..PANEL	1	1	
52	NAS679A06	..NUT (REPLACED BY MS21042L06)	4	1	
52	MS21042L06	..NUT (REPLACES NAS679A06)	4	1	
53	MS35214-25	..SCREW	4	1	
54	204-072-112-003	..PLATE	2	1	
55	NAS679A06	..NUT (REPLACED BY MS21042L06)	2	1	
55	MS21042L06	..NUT (REPLACES NAS679A06)	2	1	
56	MS35214-25	..SCREW	2	1	
57	206-070-273-001	..COVER	1		
58	204-075-266-025	..PANEL ASSY, BLANK	1	1	
59	PF3 1-2-38	..STUD	4		
60	PS3 1-2	..SPRING	4	1	
61	PC3 1-2	..CUP	4	1	
62	204-075-266-027	..PANEL ASSY, BLANK	1	1	
63	MS35214-25	..SCREW	4	1	
64	206-070-269-001	..INSTRUMENT CLUSTER (NOTE 2) (REPLACED BY 206-070-269-021)	1		A
64	206-070-269-021	..INSTRUMENT CLUSTER (REPLACES 206-070-269-001)	1		A
64	206-070-351-001	..INSTRUMENT CLUSTER (NOTE 2) (REPLACED BY 206-070-351-003)	1		B
64	206-070-351-003	..INSTRUMENT CLUSTER (REPLACES 206-070-351-001)	1	0	B
64	206-070-473-001	..INSTRUMENT CLUSTER (NOTE 2) (REPLACED BY 206-070-473-005)	1	0	P
64	206-070-473-005	..INSTRUMENT CLUSTER (REPLACES 206-070-473-001)	1	6	P
64	206-070-473-003	..INSTRUMENT CLUSTER (REPLACED BY 206-070-473-007)	1		F
64	206-070-473-007	..INSTRUMENT CLUSTER (REPLACES 206-070-473-003)	1	6	F
65	4101-3002	..LOADMETER	1		A
65	4101-1006	..LOADMETER (ALTERNATE PART)	1		B
65	4101-1009	..LOADMETER	1	1	B
65	4101-1003	..MODULE-LOADMETER	1		Q
66	5702-3002	..GAUGE, FUEL QUANTITY	1		A
66	5702-1005	..GAUGE, FUEL QUANTITY (ALTERNATE PART)	1		B
66	5702-1007	..GAUGE, FUEL QUANTITY	1		B

(1) INDEX NUMBER	(2) PART NUMBER	(3) ITEM NAME	(4) UNIT PER ASSY	(5) A V A I L	(6) U O C
		FIGURE: 95-10. Panel installation, instrument (S/N 154 thru 913) (Cont'd)			
66	5702-1003	...MODULE , FUEL QUANTITY	1		Q
67	5002-3003	...GAUGE, TRANSMISSION OIL TEMPERATURE	1		A
67	5002-1017	...GAUGE, TRANSMISSION OIL TEMPERATURE (ALTERNATE PART)	1	1	B
67	5002-1021	...GAUGE, TRANSMISSION OIL TEMPERATURE	1		B
67	5002-1009	...MODULE, TRANSMISSION OIL TEMPERATURE	1		Q
68	5002-3002	...GAUGE, ENGINE OIL TEMPERATURE	1		A
68	5002-1016	...GAUGE, ENGINE OIL TEMPERATURE (ALTERNATE PART)	1	1	B
68	5002-1020	...GAUGE, ENGINE OIL TEMPERATURE	1	1	B
68	5002-1010	...MODULE, ENGINE OIL TEMPERATURE	1		Q
69	206-070-269-025	...GAUGE, FUEL PRESSURE	1	0	A
69	4306-1010	...GAUGE, FUEL PRESSURE (ALTERNATE PARTS)	1		B
69	4306-1017	...GAUGE, FUEL PRESSURE	1		A
69	4306-1013	...GAUGE, FUEL PRESSURE	1		B
69	4306-1003	...MODULE , FUEL PRESSURE	1		Q
70	4301-3004	...GAUGE, TRANSMISSION OIL PRESSURE	1		A
70	4306-1009	...GAUGE, TRANSMISSION OIL PRESSURE (ALTERNATE PART)	1	6	B
70	4306-1011	...GAUGE, TRANSMISSION OIL PRESSURE	1	1	B
70	4306-1002	...MODULE , TRANSMISSION OIL PRESSURE	1		Q
71	4301-3003	...GAUGE, ENGINE OIL PRESSURE	1		A
71	4306-1008	...GAUGE, ENGINE OIL PRESSURE (ALTERNATE PART)	1	1	B
71	4306-1012	...GAUGE, ENGINE OIL PRESSURE	1	6	B
71	4306-1015	...GAUGE, ENGINE OIL PRESSURE	1	6	F
72	206-070-271-001	..PANEL ASSY	1		A
72	206-070-271-009	..PANEL ASSY	1	0	B
72	206-070-271-037	..PANEL ASSY	1		C
72	206-070-271-033	..PANEL ASSY	1		K
73	MS21069L08	...NUTPLATE	20	1	
74	MS21069L3	...NUTPLATE	4	1	K
75	URA3	...RECEPTACLE	14	1	
76	206-072-605-001	DECAL (AIRSPEED LIMITATIONS) (POST SI 206-80) (PRE SI 206-112)	1		
76	206-072-623-103	DECAL (OPERATING LIMITATIONS) (PRE SI 206-112)	1		
76	206-072-623-007	DECAL (OPERATING LIMITS 170 LBS) (POST SI 206-112)	1		
	206-072-715-005	BRACKET INSTL (POST SI 206-112)	1		
77	206-072-715-025	..PAD	1	1	
78	206-072-715-007	..BRACKET ASSY	1	1	
79	206-072-683-003	..DECAL (AIRSPEED LIMITATIONS)	1	1	
80	206-072-683-005	..DECAL (AIRSPEED LIMITATIONS)	1	1	
81	206-072-715-025	..PAD	1	1	
82	206-072-713-001	..SPRING	1	1	
83	206-072-714-001	..SPRING	1	1	
84	MS20253P2-350	..PIN	1		
85	206-072-715-023	..HINGE HALF (MAKE FROM MS20257X5-350)	1		

(1) INDEX NUMBER	(2) PART NUMBER	(3) ITEM NAME	(4) UNIT PER ASSY	(5) A V A I L	(6) U O C																																																
85	MS20257X5-350	<p>FIGURE: 95-10. Panel installation, instrument (S/N 154 thru 913) (Cont'd)</p> <p>..HINGE HALF</p> <p>..HINGE HALF</p> <p>NOTE 2: EXISTING INDICATORS MAY BE REWORKED INTO THE NEW CONFIGURATION BY ADDING RANGE MARKS AND REIDENTIFYING TO THE NEW NUMBERS, EXCEPT THE TORQUEMETER MAY NOT BE REMARKED.</p> <p style="text-align: center;">USABLE ON CODES</p> <table border="0"> <thead> <tr> <th>CODE</th> <th>MODEL</th> <th>SERIAL NUMBER</th> </tr> </thead> <tbody> <tr><td>A</td><td>206A</td><td>154 - 253</td></tr> <tr><td>B</td><td>206A</td><td>254 - 413</td></tr> <tr><td>C</td><td>206A</td><td>414 - 440</td></tr> <tr><td>D</td><td>206A</td><td>441 - 583</td></tr> <tr><td>E</td><td>206A</td><td>584 - 660, 672 - 715</td></tr> <tr><td>F</td><td>206B</td><td>661 - 671, 716 - 913</td></tr> <tr><td>G</td><td>206A</td><td>154 - 440</td></tr> <tr><td>H</td><td>206A/B</td><td>441 - 913</td></tr> <tr><td>J</td><td>206A</td><td>154 - 583</td></tr> <tr><td>K</td><td>206A/B</td><td>584 - 913</td></tr> <tr><td>L</td><td>206A/B</td><td>254 - 913</td></tr> <tr><td>M</td><td>206A</td><td>254 - 583</td></tr> <tr><td>N</td><td>206A</td><td>254 - 660, 672 - 715</td></tr> <tr><td>P</td><td>206A</td><td>414 - 660, 672 - 715</td></tr> <tr><td>Q</td><td>206A/B</td><td>414 - 913</td></tr> </tbody> </table> <p>1) UNLESS A USABLE ON PART NUMBER IS LISTED IN THE ITEM NAME COLUMN; NO CODE INDICATES THE PART APPLIES TO ALL SERIAL NUMBERS.</p> <p>2) IF THE SERIAL NUMBER IS BLANK THE PART APPLIES TO ALL SERIAL NUMBERS FOR THAT MODEL.</p>	CODE	MODEL	SERIAL NUMBER	A	206A	154 - 253	B	206A	254 - 413	C	206A	414 - 440	D	206A	441 - 583	E	206A	584 - 660, 672 - 715	F	206B	661 - 671, 716 - 913	G	206A	154 - 440	H	206A/B	441 - 913	J	206A	154 - 583	K	206A/B	584 - 913	L	206A/B	254 - 913	M	206A	254 - 583	N	206A	254 - 660, 672 - 715	P	206A	414 - 660, 672 - 715	Q	206A/B	414 - 913	1	1	
CODE	MODEL	SERIAL NUMBER																																																			
A	206A	154 - 253																																																			
B	206A	254 - 413																																																			
C	206A	414 - 440																																																			
D	206A	441 - 583																																																			
E	206A	584 - 660, 672 - 715																																																			
F	206B	661 - 671, 716 - 913																																																			
G	206A	154 - 440																																																			
H	206A/B	441 - 913																																																			
J	206A	154 - 583																																																			
K	206A/B	584 - 913																																																			
L	206A/B	254 - 913																																																			
M	206A	254 - 583																																																			
N	206A	254 - 660, 672 - 715																																																			
P	206A	414 - 660, 672 - 715																																																			
Q	206A/B	414 - 913																																																			
86	MS20257Y5-350																																																				



206A/B/B3-95-1011
C0000

Figure 95-11. Panel installation, instrument (S/N 914 thru 3386)

(1) INDEX NUMBER	(2) PART NUMBER	(3) ITEM NAME	(4) UNIT PER ASSY	(5) A V A I L	(6) U O C
		FIGURE: 95-11. Panel installation, instrument (S/N 914 thru 3386)			
	206-075-276-001	PANEL INSTL, INSTRUMENT	1		
	206-075-276-011	PANEL INSTL, INSTRUMENT	1		
	206-075-276-015	PANEL INSTL, INSTRUMENT	1		
	206-075-276-029	PANEL INSTL, INSTRUMENT	1		
1	MS35207-264	.SCREW	5	1	
2	MS35207-264	.SCREW	1	1	A
2	AN3-4A	.BOLT	1	1	B
3	AN960PD10L	.WASHER (REPLACES AN960JD10L)	6		
3	AN960JD10L	.WASHER (REPLACES AN960PD10L) (REPLACED BY NAS1149D0332J)	6		
3	NAS1149D0332J	.WASHER (REPLACES AN960JD10L)	6		
4	MS20253P2-750	.PIN, HINGE (MAKE FROM MS20253P2)	1		
4	MS20253P2	.PIN, HINGE	1		
5	MS21042L3	.NUT	2	1	
6	AN960D10L	.WASHER (REPLACED BY NAS1149D0316H)	4	0	
6	NAS1149D0316H	.WASHER (REPLACES AN960D10L)	4		
7	MS27039-1-08	.SCREW	2	1	
8	MS25083-2BB6	.JUMPER ASSY (REPLACED BY M83413/8-A006BB)	1	1	
8	M83413/8-A006BB	.JUMPER ASSY (REPLACES MS25083-2BB6)	1		
	206-075-276-003	.PANEL ASSY	1		C
	206-075-276-013	.PANEL ASSY	1		D
	206-075-276-017	.PANEL ASSY	1		E
	206-075-276-031	.PANEL ASSY	1		H
9	MS21042L06	.NUT	16	1	
10	MS35206-228	.SCREW	16	1	
11	204-072-112-003	.PLATE	3	1	
12	206-070-198-037	.COVER	2	1	
13	NAS487-16	.NUT (REPLACED BY MS33737-12C)	2		
13	MS33737-12C	.NUT (REPLACES NAS487-16)	2		
14	MS21042L06	.NUT	2	1	
15	MS35206-228	.SCREW	4	1	
16	204-072-112-005	.COVER	1	6	
17	90-032-327B1	.LIGHT	1	1	
18	23-320-01	.INCLINOMETER, BALL BANK (REFERENCE DESIGNATOR . . 4M2)	1	1	
19	NAS487-21	.NUT (REPLACED BY MS33737-16C)	7		
19	MS33737-16C	.NUT (REPLACES NAS487-21)	7		
20	MS35214-31	.SCREW	7	1	
21	206-070-263-005	.INDICATOR, ALTIMETER	1	1	
22	206-070-264-005	.INDICATOR, AIRSPEED (REPLACED BY 206-075-725-001)	1	0	
22	206-075-725-001	.INDICATOR, AIRSPEED (REPLACES 206-070-264-005)	1	1	
23	NAS487-18	.NUT (REPLACED BY MS33737-14C)	4		
23	MS33737-14C	.NUT (REPLACES NAS487-18)	4	0	
24	MS35214-29	.SCREW	4	1	
25	206-070-265-007	.INDICATOR, DUAL TACHOMETER (PRE SI 206-112) (NOTE 1) (REPLACED BY 206-075-681-001) (REFERENCE DESIGNATOR 1M6)	1	0	G

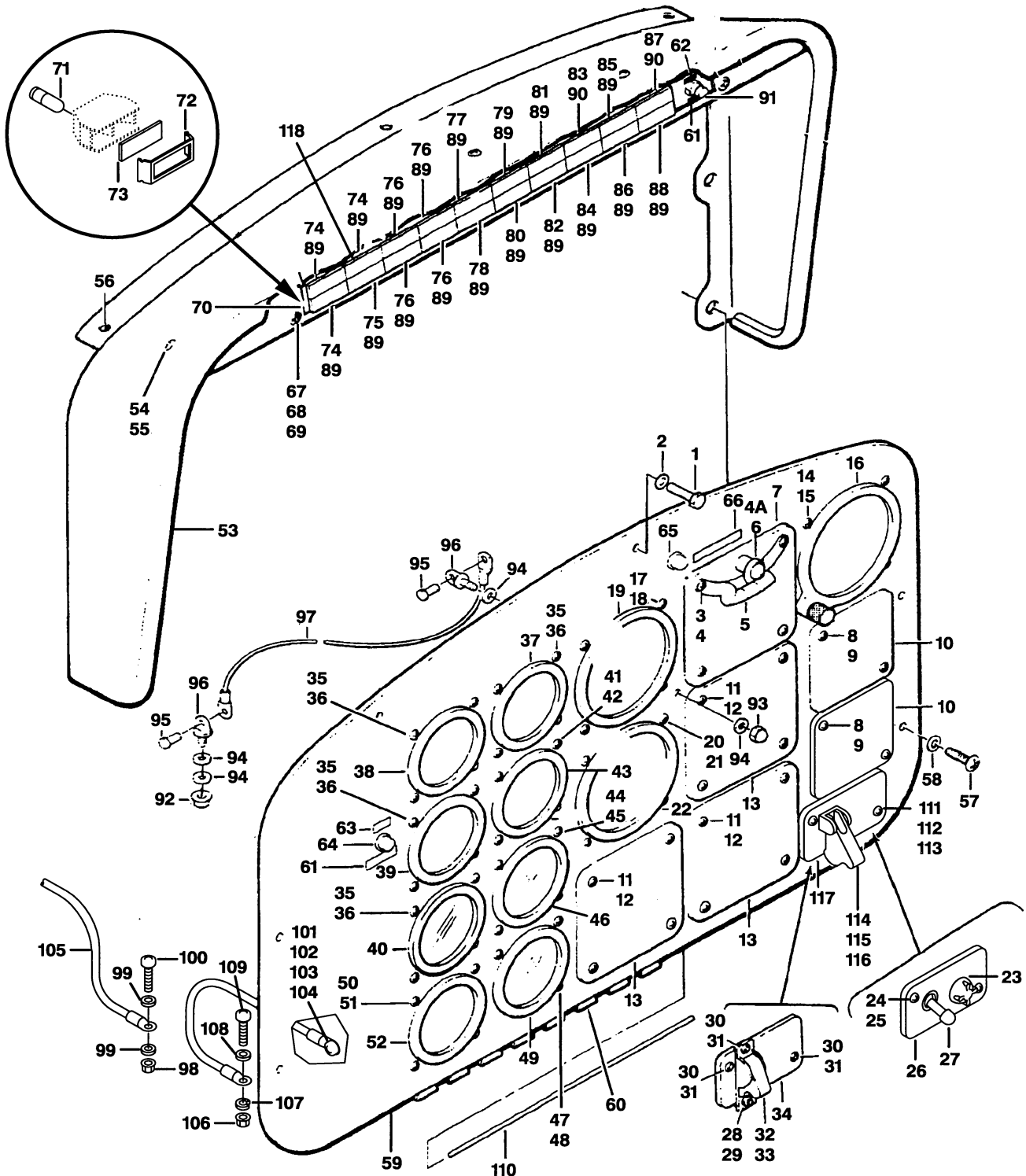
(1) INDEX NUMBER	(2) PART NUMBER	(3) ITEM NAME	(4) UNIT PER ASSY	(5) A V A I L	(6) U O C
		FIGURE: 95-11. Panel installation, instrument (S/N 914 thru 3386) (Cont'd)			
25	206-075-681-001	..INDICATOR, DUAL TACHOMETER (PRE SI 206-112) (REPLACES 206-070-265-007) (REFERENCE DESIGNATOR 1M6) (ALTERNATE PART)	1	1	G
25	206-075-681-121	..INDICATOR, DUAL TACHOMETER (PRE SI 206-112) (REFERENCE DESIGNATOR 1M6)	1		G
25	206-070-265-011	..INDICATOR, DUAL TACHOMETER (POST SI 206-112) . . . (REPLACED BY 206-075-681-003) (REFERENCE DESIGNATOR 1M6) (ALTERNATE PARTS)	1		H
25	206-075-681-107	..INDICATOR, DUAL TACHOMETER (REFERENCE DESIGNATOR 1M6)	1		H
25	206-075-681-115	..INDICATOR, DUAL TACHOMETER (REFERENCE DESIGNATOR 1M6)	1	1	H
25	206-075-681-003	..INDICATOR, DUAL TACHOMETER (REPLACES 206-075-265-011) (REFERENCE DESIGNATOR 1M6)	1		H
26	NAS487-17	..NUT (REPLACED BY MS33737-13C)	32		
26	MS33737-13C	..NUT (REPLACES NAS487-17)	32	1	
27	MS35214-28	..SCREW	32	1	
28	206-075-185-001	..INDICATOR, TORQUEMETER (REPLACED BY 206-075-739-115)	1	0	
28	206-075-739-115	..INDICATOR, TORQUEMETER (REPLACES 206-075-185-001)	1	1	
29	206-075-190-001	..INDICATOR, TURBINE OUTLET TEMPERATURE (PRE SI . . 206-112) (REPLACED BY 206-375-009-101) (REFERENCE DESIGNATOR 1M4)	1		F
29	5029-3003	..INDICATOR, TURBINE OUTLET TEMPERATURE (PRE SI . . 206-112) (REFERENCE DESIGNATOR 1M4)	1	0	F
29	122.444	..INDICATOR, TURBINE OUTLET TEMPERATURE (PRE SI . . 206-112) (REFERENCE DESIGNATOR 1M4)	1		F
29	122.444-10	..INDICATOR, TURBINE OUTLET TEMPERATURE (PRE SI . . 206-112) (REFERENCE DESIGNATOR 1M4)	1		F
29	206-375-009-101	..INDICATOR, TURBINE OUTLET TEMPERATURE (PRE SI . . 206-112) (REPLACES 206-075-190-001) (REFERENCE DESIGNATOR 1M4)	1		
29	5029-3014	..INDICATOR, TURBINE OUTLET TEMPERATURE (POST SI . 206-112) (REFERENCE DESIGNATOR 1M4) (ALTERNATE PART)	1	0	H
29	124.444-2	..INDICATOR, TURBINE OUTLET TEMPERATURE (REPLACED BY 124.444-12, 206-075-680-103 AND 206-375-005-101) (REFERENCE DESIGNATOR 1M4)	1		H
29	124.444-12	..INDICATOR, TURBINE OUTLET TEMPERATURE (REPLACES 124.444-2) (REPLACED BY 206-075-680-103 AND 206-375-005-101) (REFERENCE DESIGNATOR 1M4)	1	0	H
29	206-075-680-103	..INDICATOR, TURBINE OUTLET TEMPERATURE (REPLACES 124.444-2 AND 124.444-12) (REPLACED BY 206-375-005-101) (REFERENCE DESIGNATOR 1M4)	1		H

(1) INDEX NUMBER	(2) PART NUMBER	(3) ITEM NAME	(4) UNIT PER ASSY	(5) A V A I L	(6) U O C
		FIGURE: 95-11. Panel installation, instrument (S/N 914 thru 3386) (Cont'd)			
29	206-375-005-101	..INDICATOR, TURBINE OUTLET TEMPERATURE (REPLACES 124.444-2, 124.444-12 AND 206-075-680-103) (REFERENCE DESIGNATOR 1M4)	1	1	H
30	206-070-266-009	..INDICATOR, GAS PRODUCER (REPLACED BY 206-075-682-109) (REFERENCE DESIGNATOR 1M5)	1		
30	206-075-682-109	..INDICATOR, GAS PRODUCER (REPLACES 206-075-266-009) (REFERENCE DESIGNATOR 1M5)	1	1	
31	206-070-275-005	..CLOCK	1	1	
32	206-075-186-003	..INDICATOR, FUEL PRESSURE (REPLACED BY 206-075-676-001, AND -107) (REFERENCE DESIGNATOR 2M1)	1	6	
32	206-075-676-001	..INDICATOR, FUEL PRESSURE (REPLACES 206-075-186-003) (REPLACED BY 206-075-676-107) (REFERENCE DESIGNATOR 2M1)	1	0	
32	206-075-676-107	..INDICATOR, FUEL PRESSURE (REPLACES 206-075-186-003 AND 206-075-676-001) (REFERENCE DESIGNATOR 2M1) (ALTERNATE PART)	1	1	
32	206-075-676-113	..INDICATOR, FUEL PRESSURE (REFERENCE DESIGNATOR 2M1)	1		
33	206-075-189-001	..INDICATOR, FUEL QUANTITY (REFERENCE DESIGNATOR 1M1)	1	1	
34	206-075-188-001	..INDICATOR, TRANSMISSION OIL (REPLACED BY 206-075-678-105) (REFERENCE DESIGNATOR 1M3)	1		
34	206-075-678-105	..INDICATOR, TRANSMISSION OIL (REPLACES 206-075-188-001) (REFERENCE DESIGNATOR 1M3)	1	1	
35	206-075-187-001	..INDICATOR, ENGINE OIL (REPLACED BY 206-075-677-103) (REFERENCE DESIGNATOR 1M2)	1	6	
35	206-075-677-103	..INDICATOR, ENGINE OIL (REPLACES 206-075-187-001) (REFERENCE DESIGNATOR 1M2)	1	1	
36	206-075-193-001	..CABLE ASSY	1		C
36	206-075-193-003	..CABLE ASSY	1	6	D
37	SW40352-1	...LIGHT, ENGINE OUT (REFERENCE DESIGNATOR I5) . . .	1	1	
38	SW40352-12	...LIGHT, CHIP DETECTOR (REFERENCE DESIGNATOR . . . I6)	1	1	
39	SW40352-20	...LIGHT, ROTOR LOW RPM (REFERENCE DESIGNATOR I33)	1	1	
40	SW40352-4	...LIGHT, TRANSMISSION TEMPERATURE (REFERENCE . . . DESIGNATOR I1)	1	1	
41	SW40352-5	...LIGHT, TRANSMISSION PRESSURE (REFERENCE DESIGNATOR I2)	1	1	
42	SW40352-6	...LIGHT, FUEL FILTER (REFERENCE DESIGNATOR I3) . .	1	1	
43	SW40352-7	...LIGHT, FUEL PUMP (REFERENCE DESIGNATOR I4)	1	1	
44	SW40352-27	...LIGHT, SPARE (REFERENCE DESIGNATOR I36, I37) . .	2	1	
45	DELETED			
46	SW40352-27	...LIGHT, SPARE (REFERENCE DESIGNATOR I38)	1	1	C
46	SW40352-28	...LIGHT, BATTERY TEMPERATURE (USBL ON 206-075-193-003) (REFERENCE DESIGNATOR DS42)	1	1	D
47	SW40352-27	...LIGHT, SPARE (REFERENCE DESIGNATOR I39)	1	1	C

(1) INDEX NUMBER	(2) PART NUMBER	(3) ITEM NAME	(4) UNIT PER ASSY	(5) A V A I L	(6) U O C
		FIGURE: 95-11. Panel installation, instrument (S/N 914 thru 3386) (Cont'd)			
47	SW40352-29	...LIGHT, BATTERY HOT (USBL ON 206-075-193-003) . . (REFERENCE DESIGNATOR DS43)	1	1	D
48	MS25237-327	...LAMP, BULB (REPLACED BY M6363/8-5)	11		
48	M6363/8-5	...LAMP, BULB (REPLACES MS25237-327)	11		
49	MS3126E10-6S	...CONNECTOR, BATTERY TEMP SWITCH (REFERENCE DESIGNATOR P207)	1	1	D
50	MS35489-38	..GROMMET	1	1	A
51	MS24658-23F	..SWITCH (REFERENCE DESIGNATOR 4A2S2)	1	1	
52	A-7165-4-327CE	..LIGHT ASSY	1		
53	MS21042L06	..NUT	2	1	
54	MS35206-231	..SCREW	2	1	
55	206-075-192-001	..PANEL	1		
	206-075-276-005	..GLARESHIELD ASSY, INSTRUMENT	1	6	A
	206-075-276-019	..GLARESHIELD ASSY, INSTRUMENT	1		B
56	206-075-278-001	..GLARESHIELD (REPLACED BY 206-075-278-055)	1		A
56	206-075-278-055	..GLARESHIELD (REPLACES 206-075-278-001)	1	1	A
56	206-075-278-029	..GLARESHIELD ASSY (REPLACED BY 206-075-278-059)	1	0	B
56	206-075-278-059	..GLARESHIELD ASSY (REPLACES 206-075-278-029)	1	1	B
57	MS35206-227	... SCREW	3	1	A
58	MS35335-30	... WASHER	3	1	A
59	50-014-1D	... RECEPTACLE (USBL ON 206-075-278-001 AND -029)	3	1	
59	MS21059L3K	... NUTPLATE (USBL ON 206-075-278-055 AND -059)	3	1	
60	206-075-278-005	... SUPPORT	1	6	A
61	206-075-278-007	... ANGLE (USBL ON 206-075-278-001)	1		A
62	206-075-278-011	... STIFFENER	1		A
63	206-075-278-015	... PLATE	1		A
64	206-075-278-017	... PLATE MOUNTING	1		A
65	MS35214-26	... SCREW	5	1	B
66	MS21075L06	... NUTPLATE (REPLACED BY MS21075L06N)	5		B
66	MS21075L06N	... NUTPLATE (REPLACES MS21075L06)	5	1	B
67	206-075-277-001	... PANEL ASSY	1	6	A
67	206-075-277-015	... PANEL ASSY	1	6	B
68	206-075-277-013	... HINGE HALF	1		
69	31-030-8D12	..DECAL (CAUTION)	1	0	B
70	206-075-279-001	..SUPPORT	1		A
71	MS21042L06	..NUT	4	1	B
72	AN960PD6L	..WASHER (REPLACED BY AN960JD6L)	4		B
72	AN960JD6L	..WASHER (REPLACES AN960PD6L) (REPLACED BY NAS1149DN616J)	4	1	B
72	NAS1149DN616J	..WASHER (REPLACES AN960JD6L)	4	1	B
73	MS35214-25	..SCREW	4	1	B
74	75-0286-1	..LIGHT ASSY	1	1	B
75	MS25237-327	... LAMP (REPLACED BY M6363/8-5)	40		B
75	M6363/8-5	... LAMP (REPLACES MS25237-327)	40		B
76	66-0651-1	... RETAINER	20	1	B
77	25-0037-15	... LIGHT FILTER	20	1	B
78	25-0195-763	... FILTER, SPARE	9	1	B

(1) INDEX NUMBER	(2) PART NUMBER	(3) ITEM NAME	(4) UNIT PER ASSY	(5) A V A I L	(6) U O C
		FIGURE: 95-11. Panel installation, instrument (S/N 914 thru 3386) (Cont'd)			
79	25-0195-1840	... FILTER, FUEL PUMP	1	1	B
80	25-0195-1483	... FILTER, T/R CHIP	1	1	B
81	25-0195-1485	... FILTER, TRANSMISSION CHIP	1	1	B
82	25-0195-1842	... FILTER, BATTERY TEMP	1	6	B
83	25-0195-1488	... FILTER, OIL TEMP	1	1	B
84	25-1095-1490	... FILTER, ROTOR LOW RPM	1		B
85	25-1095-1489	... FILTER, ENG OUT	1		B
86	25-0195-313	... FILTER, TRANSMISSION OIL PRESSURE	1	1	B
87	25-0195-1486	... FILTER, BATTERY HOT	1	1	B
88	25-0195-1484	... FILTER, ENGINE CHIP	1	1	B
89	25-0195-622	... FILTER, FUEL FILTER	1	1	B
90	25-0037-13	... LIGHT FILTER, YELLOW	18	1	B
91	25-0037-17	... LIGHT FILTER, RED	2	1	B
92	66-0654-3	... REFLECTOR ASSY	20		B
93	2PB11	... SWITCH, PRESS TO TEST (REFERENCE DESIGNATOR S1)	1	1	B
94	206-070-623-007	DECAL (POST SI 206-112) (OPERATING LIMITS 170 LBS)	1		
	206-072-715-005	BRACKET INSTL (POST SI 206-112)	1		
95	206-072-715-025	.PAD	1	1	
96	206-072-715-007	.BRACKET ASSY	1	1	
97	206-072-683-003	..DECAL (AIRSPEED LIMITATIONS)	1	1	
98	206-072-683-005	..DECAL (AIRSPEED LIMITATIONS)	1	1	
99	206-072-715-025	..PAD	1	1	
100	206-072-713-001	..SPRING	1	1	
101	206-072-714-001	..SPRING	1	1	
102	MS20253P2-350	..PIN	1		
103	206-072-715-023	..HINGE HALF (MAKE FROM MS20257X5-350)	1		
103	MS20257X5-350	..HINGE HALF	1		
104	MS20257Y5-350	..HINGE HALF	1		
105	31-042-84TGP	DECAL (WARNING HORN)	1	1	
106	MS25089-48	SWITCH (POST TB 206-95-158)	1		
107	SW40352-31	LIGHT, FUEL LOW (POST TB 206-85-113)	1		A
108	25-0195-316	FILTER, FUEL LOW (POST TB 206-85-113)	1	1	H
		NOTE 1: EXISTING INDICATOR MAY BE REWORKED INTO THE NEW CONFIGURATION BY ADDING RANGE MARKS AND REIDENTIFYING TO THE NUMBERS.			

(1) INDEX NUMBER	(2) PART NUMBER	(3) ITEM NAME	(4) UNIT PER ASSY	(5) A V A I L	(6) U O C																											
		<p>FIGURE: 95-11. Panel installation, instrument (S/N 914 thru 3386) (Cont'd)</p> <p style="text-align: center;">USABLE ON CODES</p> <table border="0" style="width: 100%;"> <thead> <tr> <th style="text-align: left;">CODE</th> <th style="text-align: left;">MODEL</th> <th style="text-align: left;">SERIAL NUMBER</th> </tr> </thead> <tbody> <tr> <td>A</td> <td>206B</td> <td>914 - 1657</td> </tr> <tr> <td>B</td> <td>206B/BIII</td> <td>1658 - 3386</td> </tr> <tr> <td>C</td> <td>206B</td> <td>914 - 1163</td> </tr> <tr> <td>D</td> <td>206B</td> <td>1164 - 1657</td> </tr> <tr> <td>E</td> <td>206B</td> <td>1658 - 2211</td> </tr> <tr> <td>F</td> <td>206B</td> <td>914 - 2211</td> </tr> <tr> <td>G</td> <td>206B</td> <td>1658 - 2123</td> </tr> <tr> <td>H</td> <td>206BIII</td> <td>2212 - 3386</td> </tr> </tbody> </table> <p>1) UNLESS A USABLE ON PART NUMBER IS LISTED IN THE ITEM NAME COLUMN; NO CODE INDICATES THE PART APPLIES TO ALL SERIAL NUMBERS .</p> <p>2) IF THE SERIAL NUMBER IS BLANK THE PART APPLIES TO ALL SERIAL NUMBERS FOR THAT MODEL .</p>	CODE	MODEL	SERIAL NUMBER	A	206B	914 - 1657	B	206B/BIII	1658 - 3386	C	206B	914 - 1163	D	206B	1164 - 1657	E	206B	1658 - 2211	F	206B	914 - 2211	G	206B	1658 - 2123	H	206BIII	2212 - 3386			
CODE	MODEL	SERIAL NUMBER																														
A	206B	914 - 1657																														
B	206B/BIII	1658 - 3386																														
C	206B	914 - 1163																														
D	206B	1164 - 1657																														
E	206B	1658 - 2211																														
F	206B	914 - 2211																														
G	206B	1658 - 2123																														
H	206BIII	2212 - 3386																														



206A/B/B3-95-1012
C0000

Figure 95-12. Panel installation, instrument and glareshield (S/N 3387 thru sub)

(1) INDEX NUMBER	(2) PART NUMBER	(3) ITEM NAME	(4) UNIT PER ASSY	(5) A V A I L	(6) U O C
		FIGURE: 95-12. Panel installation, instrument and glareshield (S/N 3387 thru sub)			
	206-075-608-101	PANEL INSTL, INSTRUMENT AND GLARESHIELD	1		
	206-075-608-105	PANEL INSTL, INSTRUMENT AND GLARESHIELD	1		
	206-075-608-117	PANEL INSTL, INSTRUMENT AND GLARESHIELD	1		
	206-075-608-123	PANEL INSTL, INSTRUMENT AND GLARESHIELD	1		
1	AN3-6A	.BOLT	1	1	
2	AN960PD10L	.WASHER (REPLACED BY AN960JD10L)	1		
2	AN960JD10L	.WASHER (REPLACES AN960PD10L) (REPLACED BY NAS1149D0332J)	1		
2	NAS1149D0332J	.WASHER (REPLACES AN960JD10L)	1		
	206-075-608-103	.PANEL ASSY	1		A
	206-075-608-107	.PANEL ASSY	1		B
	206-075-608-113	.PANEL ASSY	1		C
	206-075-608-119	.PANEL ASSY	1		D
	206-075-608-125	.PANEL ASSY	1		E
	206-075-608-127	.PANEL ASSY	1		F
	206-075-608-129	.PANEL ASSY	1		G
3	MS21042L06	..NUT	4	1	
4	MS35206-228	..SCREW	4	1	H
4	MS35214-25	..SCREW	4	1	J
4A	NAS43DD4-8N	..SPACER	1	0	AC
5	23-320-01	..INCLINOMETER (REFERENCE DESIGNATOR 4M2)	1	1	
6	90-032-327B1	..LIGHT (REFERENCE DESIGNATOR 4M2DS1)	1	1	
7	204-072-112-005	..COVER	1	6	
8	MS21042L06	..NUT	4	1	
9	MS35206-228	..SCREW	4	1	K
9	MS35214-25	..SCREW	4	1	L
10	206-070-198-037	..COVER	2	1	
11	MS21042L06	..NUT	12	1	
12	MS35206-228	..SCREW	12	1	K
12	MS35214-25	..SCREW	12	1	L
13	204-072-112-003	..PLATE	3	1	
14	MS33737-16	..NUT (REPLACED BY MS33737-16C)	3		K
14	MS33737-16C	..NUT (REPLACES MS33737-16)	3		K
14	MS33737-13	..NUT (REPLACED BY MS33737-13C)	3		L
14	MS33737-13C	..NUT (REPLACES MS33737-13)	3	1	L
15	MS35214-31	..SCREW	3	1	
16	206-070-263-005	..INDICATOR, ALTIMETER (REPLACED BY 206-070-263-101)	1	1	H
16	206-070-263-101	..INDICATOR, ALTIMETER (REPLACES 206-070-263-005)	1	1	
17	MS33737-16	..NUT (REPLACED BY MS33737-16C)	4		
17	MS33737-16C	..NUT (REPLACES MS33737-16)	4		
18	MS35214-31	..SCREW	4	1	K
18	MS35214-41	..SCREW	4	1	L
19	206-075-725-001	..INDICATOR, AIRSPEED	1	1	
20	MS33737-16	..NUT (REPLACED BY MS33737-16C)	4		K
20	MS33737-16C	..NUT (REPLACES MS33737-16)	4		K
20	MS33737-14	..NUT (REPLACED BY MS33737-14C)	4	1	L
20	MS33737-14C	..NUT (REPLACES MS33737-14)	4	0	L

(1) INDEX NUMBER	(2) PART NUMBER	(3) ITEM NAME	(4) UNIT PER ASSY	(5) A V A I L	(6) U O C
		FIGURE: 95-12. Panel installation, instrument and glareshield (S/N 3387 thru sub) (Cont'd)			
21	MS35214-32	..SCREW	4	1	K
21	MS35214-40	..SCREW	4	1	L
22	206-075-681-003	..INDICATOR, DUAL TACHOMETER (REFERENCE DESIGNATOR 1M6) (ALTERNATE PARTS)	1		
22	206-075-681-107	..INDICATOR, DUAL TACHOMETER (REFERENCE DESIGNATOR 1M6)	1		
22	206-075-681-115	..INDICATOR, DUAL TACHOMETER (REFERENCE DESIGNATOR 1M6)	1	1	
23	A7165-4-327CE	..LIGHT ASSY (REPLACED BY 90-028-1)	1		H
23	90-028-1	..LIGHT ASSY (REPLACES A7165-4-327CE)	1	1	H
24	MS21042L06	..NUT	2	1	H
25	MS35206-231	..SCREW	2	1	H
26	206-075-192-001	..PANEL, FUEL VALVE (REPLACED BY 206-075-192-101)	1		H
26	206-075-192-101	..PANEL, FUEL VALVE (REPLACES 206-075-192-001) . . .	1	1	H
27	MS24658-23F	..SWITCH, RED (REPLACED BY 206-075-754-103) (REFERENCE DESIGNATOR 4A2S2)	1	1	M
27	206-075-754-103	..SWITCH ASSY, RED (REPLACES MS24658-23F) (REFERENCE DESIGNATOR 4A2S2)	1	1	N
28	RM22K1-62	..NUT, DOME (ALTERNATE PART)	1	1	J
28	F22K1-62	..NUT, DOME	1	6	J
29	NAS1189-06P8	..SCREW	1	1	J
30	MS21042L06	..NUT	3	1	J
31	MS35214-27	..SCREW	3	1	J
32	A-5506	..GUARD (REPLACED BY 8916K970)	1	0	E
32	8916K970	..GUARD (REPLACES A-5506) (ALTERNATE PART)	1	0	FG
32	MS25452-1	..GUARD	1	1	J
33	MS24524-23	..SWITCH (REFERENCE DESIGNATOR 4A2S2)	1	1	J
34	206-075-778-101	..PANEL	1	1	J
35	MS33737-10	..NUT (REPLACED BY MS33737-10C)	16		K
35	MS33737-10C	..NUT (REPLACES MS33737-10)	16		K
35	MS33737-15	..NUT (REPLACED BY MS33737-15C)	16		L
35	MS33737-15C	..NUT (REPLACES MS33737-15)	16		L
36	MS35214-29	..SCREW	16	1	K
36	MS35214-31	..SCREW	16	1	L
37	206-075-185-001	..INDICATOR, TORQUEMETER (REPLACED BY 206-075-739-107 AND -115)	1	0	X
37	206-075-739-107	..INDICATOR, TORQUEMETER (REPLACES 206-075-185-001) (REPLACED BY 206-075-739-115)	1		Y
37	206-075-739-115	..INDICATOR, TORQUEMETER (REPLACES 206-075-185-001 AND 206-075-739-107) (REFERENCE DESIGNATOR 1M3)	1	1	
38	206-075-187-003	..INDICATOR, ENGINE OIL TEMPERATURE AND PRESSURE . (REPLACED BY 206-075-677-103) (REFERENCE DESIGNATOR 1M2)	1	0	P

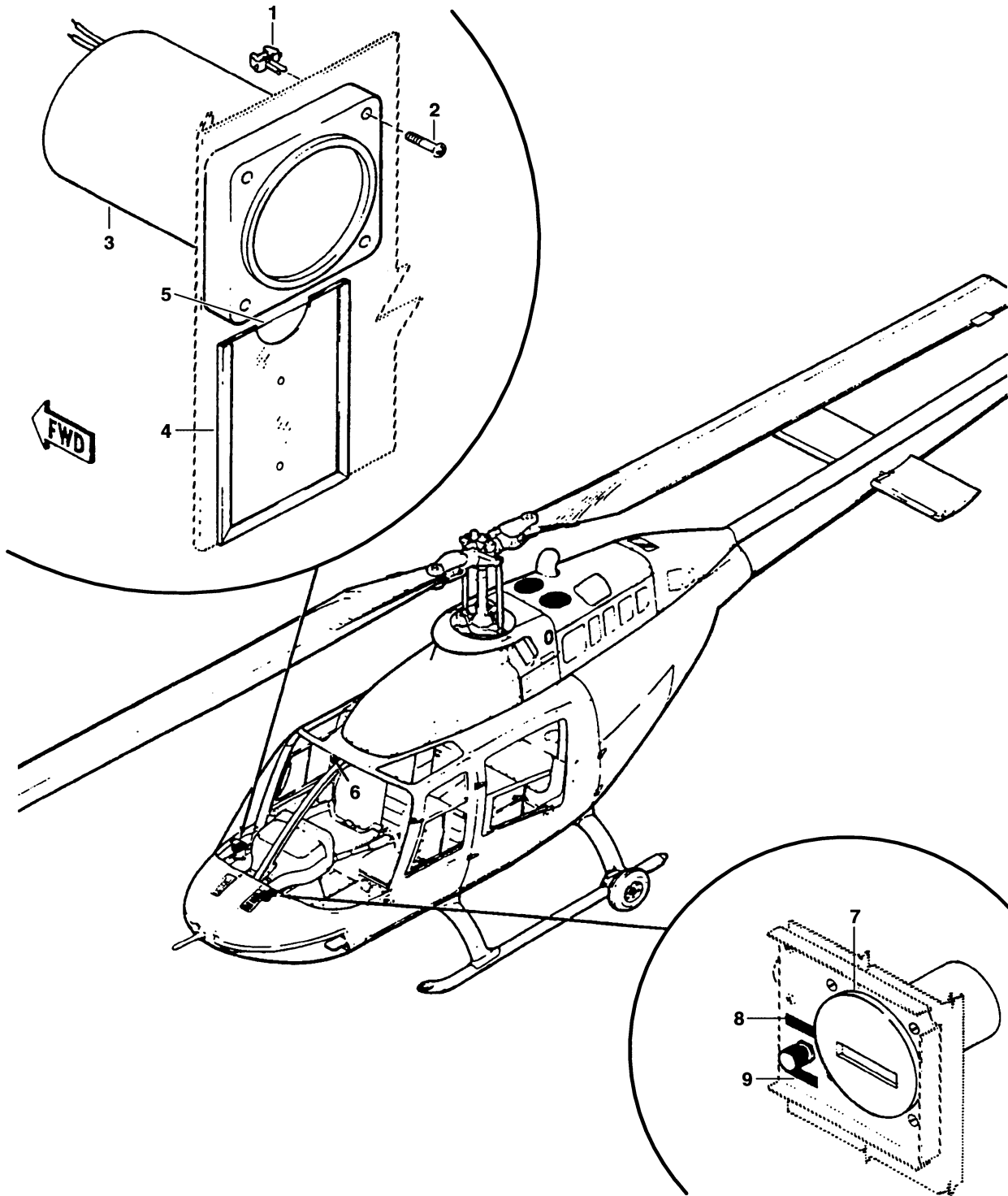
(1) INDEX NUMBER	(2) PART NUMBER	(3) ITEM NAME	(4) UNIT PER ASSY	(5) A V A I L	(6) U O C
		FIGURE: 95-12. Panel installation, instrument and glareshield (S/N 3387 thru sub) (Cont'd)			
		(ALTERNATE PART)			
38	206-075-677-101	..INDICATOR, ENGINE OIL TEMPERATURE AND PRESSURE . (REFERENCE DESIGNATOR 1M2)	1		P
38	206-075-677-103	..INDICATOR, ENGINE OIL TEMPERATURE AND PRESSURE . (REPLACES 206-075-187-003) (REFERENCE DESIGNATOR 1M2)	1	1	
39	206-075-188-003	..INDICATOR, TRANSMISSION OIL TEMPERATURE AND . . . PRESSURE (REPLACED BY 206-075-678-105) (REFERENCE DESIGNATOR 1M3)	1	0	P
		(ALTERNATE PART)			
39	206-075-678-101	..INDICATOR, TRANSMISSION OIL TEMPERATURE AND . . . PRESSURE (REFERENCE DESIGNATOR 1M3)	1		P
39	206-075-678-105	..INDICATOR, TRANSMISSION OIL TEMPERATURE AND . . . PRESSURE (REPLACES 206-075-188-003) (REFERENCE DESIGNATOR 1M3)	1	1	
40	206-075-189-001	..INDICATOR, FUEL QUANTITY (REFERENCE DESIGNATOR 1M1)	1	1	A
		(ALTERNATE PART)			
40	206-075-740-103	..INDICATOR, FUEL QUANTITY (REFERENCE DESIGNATOR 1M1)	1	6	A
40	206-075-189-101	..INDICATOR, FUEL QUANTITY (REPLACED BY 206-075-740-107) (REFERENCE DESIGNATOR 1M1)	1		S
40	206-075-740-107	..INDICATOR, FUEL QUANTITY (REPLACES 206-075-189-001) (REFERENCE DESIGNATOR 1M1)	1		T
		(ALTERNATE PART)			
40	206-075-740-113	..INDICATOR, FUEL QUANTITY (REFERENCE DESIGNATOR 1M1)	1		T
41	MS33737-15	..NUT (REPLACED BY MS33737-15C)	4		K
41	MS33737-15C	..NUT (REPLACES MS33737-15)	4		K
41	MS33737-11	..NUT (REPLACED BY MS33737-11C)	4		L
41	MS33737-11C	..NUT (REPLACES MS33737-11)	4		L
42	MS35214-30	..SCREW	4	1	K
42	MS35214-31	..SCREW	4	1	L
43	3571251-9127	..INDICATOR, TURBINE OUTLET TEMPERATURE (REPLACED BY 206-375-005-101) (REFERENCE DESIGNATOR 1M4)	1	0	A
43	206-075-680-103	..INDICATOR, TURBINE OUTLET TEMPERATURE (REPLACED BY 206-375-005-101) (REFERENCE DESIGNATOR 1M4)	1		Q
43	206-375-005-101	..INDICATOR, TURBINE OUTLET TEMPERATURE (REPLACES 206-075-680-103 AND 3571251-9127) (REFERENCE DESIGNATOR 1M4)	1	1	
44	MS33737-16	..NUT (REPLACED BY MS33737-16C)	4		K
44	MS33737-16C	..NUT (REPLACES MS33737-16)	4		K
44	MS33737-11	..NUT (REPLACED BY MS33737-11C)	4		
44	MS33737-11C	..NUT (REPLACES MS33737-11)	4		
45	MS35214-30	..SCREW	4	1	K
45	MS35214-31	..SCREW	4	1	L

(1) INDEX NUMBER	(2) PART NUMBER	(3) ITEM NAME	(4) UNIT PER ASSY	(5) A V A I L	(6) U O C
		FIGURE: 95-12. Panel installation, instrument and glareshield (S/N 3387 thru sub) (Cont'd)			
46	206-075-682-001	..INDICATOR, GAS PRODUCER (REPLACED BY 206-075-682-109) (REFERENCE DESIGNATOR 1M5) (ALTERNATE PARTS)	1		R
46	206-075-682-101	..INDICATOR, GAS PRODUCER (REFERENCE DESIGNATOR . . 1M5)	1		R
46	206-075-682-105	..INDICATOR, GAS PRODUCER (REFERENCE DESIGNATOR . . 1M5)	1		R
46	206-075-682-109	..INDICATOR, GAS PRODUCER (REPLACES 206-075-682-001) (REFERENCE DESIGNATOR 1M5)	1	1	
47	MS33737-13	..NUT (REPLACED BY MS33737-13C)	2		K
47	MS33737-13C	..NUT (REPLACES MS33737-13)	2	1	K
47	MS33737-16	..NUT (REPLACED BY MS33737-16C)	2		L
47	MS33737-16C	..NUT (REPLACES MS33737-16)	2		L
48	MS35214-28	..SCREW	2	1	K
48	MS35214-31	..SCREW	2	1	L
49	206-070-275-005	..CLOCK	1	1	R
49	M800-5-BATT	..CLOCK	1	1	G
50	MS33737-11	..NUT (REPLACED BY MS33737-11C)	4		K
50	MS33737-11C	..NUT (REPLACES MS33737-11)	4		K
50	MS33737-15	..NUT (REPLACED BY MS33737-15C)	4		L
50	MS33737-15C	..NUT (REPLACES MS33737-15)	4		L
51	MS35214-30	..SCREW	4	1	K
51	MS35214-31	..SCREW	4	1	L
52	206-075-676-001	..INDICATOR, FUEL PRESSURE/LOADMETER (REPLACED . . BY 206-075-676-107) (REFERENCE DESIGNATOR 2M1) (ALTERNATE PART)	1	0	K
52	206-075-676-103	..INDICATOR, FUEL PRESSURE/LOADMETER (REFERENCE . DESIGNATOR 2M1)	1		K
52	206-075-676-107	..INDICATOR, FUEL PRESSURE/LOADMETER (REPLACES . . 206-075-676-001) (REFERENCE DESIGNATOR 2M1) (ALTERNATE PART)	1	1	
52	206-075-676-113	..INDICATOR, FUEL PRESSURE/LOADMETER (REFERENCE . DESIGNATOR 2M1)	1		
53	206-075-278-059	..GLARESHIELD ASSY, INSTRUMENT PANEL	1	1	
54	MS35214-24	..SCREW	5	1	
55	MS21075L06	..NUTPLATE (REPLACED BY MS21075L06N)	5		
55	MS21075L06N	..NUTPLATE (REPLACES MS21075L06)	5	1	
56	MS21059L3K	..NUTPLATE	3	1	
57	MS35207-264	..SCREW	5	1	
58	AN960PD10L	..WASHER (REPLACED BY AN960JD10L)	5		
58	AN960JD10L	..WASHER (REPLACES AN960PD10L) (REPLACED BY NAS1149D0332J)	5		
58	NAS1149D0332J	..WASHER (REPLACES AN960JD10L)	5		
59	206-075-277-105	..PANEL ASSY	1	1	K
59	206-075-277-109	..PANEL ASSY	1		D
59	206-075-277-125	..PANEL ASSY	1		E
59	206-075-277-133	..PANEL ASSY	1	6	F
59	206-075-277-139	..PANEL ASSY	1	6	G
60	206-075-277-013	..HINGE HALF	1		

(1) INDEX NUMBER	(2) PART NUMBER	(3) ITEM NAME	(4) UNIT PER ASSY	(5) A V A I L	(6) U O C
FIGURE: 95-12. Panel installation, instrument and glareshield (S/N 3387 thru sub) (Cont'd)					
61	31-042-74TGP	..DECAL (LT TEST)	2	1	
62	31-042-73TGP	..DECAL (CAUTION)	1	1	
63	31-042-72TGP	..DECAL (TOT)	1	1	
64	BW9021BB	..SWITCH (REFERENCE DESIGNATOR S113)	1	1	
65	MS25089-4H	..SWITCH (POST TB 206-95-158 FOR S/N 3387 THRU 4004) (REFERENCE DESIGNATOR 4S5)	1	1	L
66	31-042-84TGP	..DECAL (WRN HORN MUTE) (POST TB 206-95-158 FOR S/N 3387 THRU 4004)	1	1	L
67	MS21042L06	..NUT	4	1	
68	AN960PD6L	..WASHER (REPLACED BY AN960JD6L)	4		
68	AN960JD6L	..WASHER (REPLACES AN960PD6L) (REPLACED BY NAS1149DN616J)	4	1	
68	NAS1149DN616J	..WASHER (REPLACES AN960JD6L)	4	1	
69	MS35214-25	..SCREW	4	1	
70	75-0286-3	..LIGHT ASSY	1	1	A
70	75-0286-9	..LIGHT ASSY	1	1	U
70	75-0286-13	..LIGHT ASSY	1	1	V
70	75-0286-17	..LIGHT ASSY	1	1	G
71	MS25237-327	..LAMP (REPLACED BY M6363/8-5)	40		
71	M6363/8-5	..LAMP (REPLACES MS25237-327)	40		
72	66-0651-1	..RETAINER	20	1	
73	25-0037-15	..LIGHT FILTER	20	1	
74	25-0195-763	..FILTER, SPARE	3	1	
75	25-0195-763	..FILTER, SPARE	1	1	U
75	25-0195-316	..FILTER, FUEL LOW (NOTE 1)	1	1	GV
76	25-0195-763	..FILTER, SPARE	4	1	U
77	25-0195-1839	..FILTER, A/F FUEL	1	1	
78	25-0195-1840	..FILTER, FUEL PUMP	1	1	
79	25-0195-763	..FILTER, SPARE	1	1	R
79	25-0195-2651	..FILTER, BAGGAGE DOOR OPEN	1	1	G
80	25-0195-1483	..FILTER, T/R CHIP	1	1	
81	25-0195-1484	..FILTER, ENG CHIP	1	1	
82	25-0195-1485	..FILTER, TRANS CHIP	1	1	
83	25-0195-1486	..FILTER, BATTERY HOT	1	1	
84	25-0195-1842	..FILTER, BATT TEMP	1	6	
85	25-0195-313	..FILTER, OIL PRESSURE, TRANSMISSION	1	1	
86	25-0195-1488	..FILTER, OIL TEMP, TRANSMISSION	1	1	
87	25-0195-1489	..FILTER, ENG OUT	1	1	
88	25-0195-1490	..FILTER, LOW RPM, ROTOR	1	1	
89	25-0037-13	..LIGHT FILTER, AVN YELLOW	18	1	
90	25-0037-17	..LIGHT FILTER, AVN RED	2	1	
	76-1059-1	..LENS, LIGHT	1		
91	2PB11	..SWITCH, PRESS TO TEST	1	1	
92	MS21042L3	..NUT	1	1	Z
93	90-003-3	..NUT	1	1	Z
94	AN960PD10	..WASHER (REPLACED BY AN960JD10)	4		Z
94	AN960JD10	..WASHER (REPLACES AN960PD10) (REPLACED BY NAS1149D0363J)	4		Z
94	NAS1149D0363J	..WASHER (REPLACES AN960JD10)	4		Z

(1) INDEX NUMBER	(2) PART NUMBER	(3) ITEM NAME	(4) UNIT PER ASSY	(5) A V A I L	(6) U O C
		FIGURE: 95-12. Panel installation, instrument and glareshield (S/N 3387 thru sub) (Cont'd)			
95	MS20392-2C7	..PIN	2		Z
96	AN42B3A	..EYEBOLT (REPLACED BY AN42B-3A)	2	1	Z
96	AN42B-3A	..EYEBOLT (REPLACES AN42B3A)	2	0	Z
97	30-033-6-14C	..LANYARD ASSY (REPLACED BY 30-033-11-14C)	1		Z
97	30-033-11-14C	..LANYARD ASSY (REPLACES 30-033-6-14C)	1	1	Z
98	MS21042L3	..NUT	2	1	AA
99	AN960JD10L	..WASHER (REPLACED BY NAS1149D0332J)	4		AA
99	NAS1149D0332J	..WASHER (REPLACES AN960JD10L)	4		AA
100	MS27039-1-08	..SCREW	2	1	AA
	33-001-002-1-07	..SUPPORT INSTL	1	0	AB
101	MS21042L3	..NUT	1	1	
102	MS35338-43	..WASHER	1	1	
103	AN960JD10L	..WASHER (REPLACED BY NAS1149D0332J)	3		
103	NAS1149D0332J	..WASHER (REPLACES AN960JD10L)	3		
104	MS27039-1-07	..SCREW	1	1	
105	MS25083-2BB6	..JUMPER ASSY (REPLACED BY M83413/8-A006BB)	1	1	
105	M83413/8-A006BB	..JUMPER ASSY (REPLACES MS25083-2BB6)	1		
	33-001-002-2-08	..SUPPORT INSTL	1		AB
106	MS21042L3	..NUT	1	1	
107	MS35338-43	..WASHER	1	1	
108	AN960JD10L	..WASHER (REPLACED BY NAS1149D0332J)	3		
108	NAS1149D0332J	..WASHER (REPLACES AN960JD10L)	3		
109	MS27039-1-08	..SCREW	1	1	
110	MS20253P2-750	..PIN, HINGE (MAKE FROM MS20253P2)	1		
110	MS20253P2	..PIN, HINGE	1		
	206-704-169-101	FUEL VALVE KIT (POST TB 206-84-94)	1	1	
111	MS21042L06	..NUT	2	1	
112	AN960JD6L	..WASHER (REPLACED BY NAS1149DN616J)	2	1	
112	NAS1149DN616J	..WASHER (REPLACES AN960JD6L)	2	1	
113	MS35214-27	..SCREW	2	1	
114	8916K951	..GUARD	1	1	
115	MS24523-23	..SWITCH (REFERENCE DESIGNATOR 4A2S2)	1	1	
116	AN960JD816	..WASHER (REPLACED BY NAS1149D0863J)	1		
116	NAS1149D0863J	..WASHER (REPLACES AN960JD816)	1		
117	206-075-778-103	..PANEL	1	1	
118	25-0195-136	FILTER, FUEL LOW (POST TB 206-85-113)	1		
		NOTE 1: FOR SERIAL NUMBER 2212 THRU 4074 POST TB 206-84-94			

(1) INDEX NUMBER	(2) PART NUMBER	(3) ITEM NAME	(4) UNIT PER ASSY	(5) A V A I L	(6) U O C																																																																																				
		<p align="center">FIGURE: 95-12. Panel installation, instrument and glareshield (S/N 3387 thru sub) (Cont'd)</p> <p align="center">USABLE ON CODES</p> <table border="0"> <thead> <tr> <th>CODE</th> <th>MODEL</th> <th>SERIAL NUMBER</th> </tr> </thead> <tbody> <tr><td>A</td><td>206BIII</td><td>3387 - 3566</td></tr> <tr><td>AA</td><td>206BIII</td><td>3387 - 4496</td></tr> <tr><td>AB</td><td>206BIII</td><td>4497 - SUB</td></tr> <tr><td>AC</td><td>206BIII</td><td>4500 - SUB</td></tr> <tr><td>B</td><td>206BIII</td><td>3567 - 3918, 3922 -</td></tr> <tr><td>C</td><td>206BIII</td><td>3919 - 3921, 3932 -</td></tr> <tr><td>D</td><td>206BIII</td><td>4005 - 4074</td></tr> <tr><td>E</td><td>206BIII</td><td>4075 - 4216</td></tr> <tr><td>F</td><td>206BIII</td><td>4217 - 4310</td></tr> <tr><td>G</td><td>206BIII</td><td>4311 - SUB</td></tr> <tr><td>H</td><td>206BIII</td><td>3387 - 4074</td></tr> <tr><td>J</td><td>206BIII</td><td>4075 - SUB</td></tr> <tr><td>K</td><td>206BIII</td><td>3387 - 4004</td></tr> <tr><td>L</td><td>206BIII</td><td>4005 - SUB</td></tr> <tr><td>M</td><td>206BIII</td><td>3387 - 3741</td></tr> <tr><td>N</td><td>206BIII</td><td>3742 - 4074</td></tr> <tr><td>P</td><td>206BIII</td><td>3387 - 3918, 3922 -</td></tr> <tr><td>Q</td><td>206BIII</td><td>3567 - 3859</td></tr> <tr><td>R</td><td>206BIII</td><td>3387 - 4310</td></tr> <tr><td>S</td><td>206BIII</td><td>3567 - 3990</td></tr> <tr><td>T</td><td>206BIII</td><td>3991 - SUB</td></tr> <tr><td>U</td><td>206BIII</td><td>3567 - 4052</td></tr> <tr><td>V</td><td>206BIII</td><td>4053 - 4310</td></tr> <tr><td>W</td><td>206BIII</td><td>3567 - 3892</td></tr> <tr><td>X</td><td>206BIII</td><td>3387 - 3809</td></tr> <tr><td>Y</td><td>206BIII</td><td>3810 - 4310</td></tr> <tr><td>Z</td><td>206BIII</td><td>3567 - SUB</td></tr> </tbody> </table> <p>1) UNLESS A USABLE ON PART NUMBER IS LISTED IN THE ITEM NAME COLUMN; NO CODE INDICATES THE PART APPLIES TO ALL SERIAL NUMBERS.</p> <p>2) IF THE SERIAL NUMBER IS BLANK THE PART APPLIES TO ALL SERIAL NUMBERS FOR THAT MODEL.</p>	CODE	MODEL	SERIAL NUMBER	A	206BIII	3387 - 3566	AA	206BIII	3387 - 4496	AB	206BIII	4497 - SUB	AC	206BIII	4500 - SUB	B	206BIII	3567 - 3918, 3922 -	C	206BIII	3919 - 3921, 3932 -	D	206BIII	4005 - 4074	E	206BIII	4075 - 4216	F	206BIII	4217 - 4310	G	206BIII	4311 - SUB	H	206BIII	3387 - 4074	J	206BIII	4075 - SUB	K	206BIII	3387 - 4004	L	206BIII	4005 - SUB	M	206BIII	3387 - 3741	N	206BIII	3742 - 4074	P	206BIII	3387 - 3918, 3922 -	Q	206BIII	3567 - 3859	R	206BIII	3387 - 4310	S	206BIII	3567 - 3990	T	206BIII	3991 - SUB	U	206BIII	3567 - 4052	V	206BIII	4053 - 4310	W	206BIII	3567 - 3892	X	206BIII	3387 - 3809	Y	206BIII	3810 - 4310	Z	206BIII	3567 - SUB			
CODE	MODEL	SERIAL NUMBER																																																																																							
A	206BIII	3387 - 3566																																																																																							
AA	206BIII	3387 - 4496																																																																																							
AB	206BIII	4497 - SUB																																																																																							
AC	206BIII	4500 - SUB																																																																																							
B	206BIII	3567 - 3918, 3922 -																																																																																							
C	206BIII	3919 - 3921, 3932 -																																																																																							
D	206BIII	4005 - 4074																																																																																							
E	206BIII	4075 - 4216																																																																																							
F	206BIII	4217 - 4310																																																																																							
G	206BIII	4311 - SUB																																																																																							
H	206BIII	3387 - 4074																																																																																							
J	206BIII	4075 - SUB																																																																																							
K	206BIII	3387 - 4004																																																																																							
L	206BIII	4005 - SUB																																																																																							
M	206BIII	3387 - 3741																																																																																							
N	206BIII	3742 - 4074																																																																																							
P	206BIII	3387 - 3918, 3922 -																																																																																							
Q	206BIII	3567 - 3859																																																																																							
R	206BIII	3387 - 4310																																																																																							
S	206BIII	3567 - 3990																																																																																							
T	206BIII	3991 - SUB																																																																																							
U	206BIII	3567 - 4052																																																																																							
V	206BIII	4053 - 4310																																																																																							
W	206BIII	3567 - 3892																																																																																							
X	206BIII	3387 - 3809																																																																																							
Y	206BIII	3810 - 4310																																																																																							
Z	206BIII	3567 - SUB																																																																																							



206A/B/B3-95-1013
C0000

Figure 95-13. Compass; thermometer and hourmeter installations

(1) INDEX NUMBER	(2) PART NUMBER	(3) ITEM NAME	(4) UNIT PER ASSY	(5) A V A I L	(6) U O C
FIGURE: 95-13. Compass; thermometer and hourmeter installations					
	206-070-106-001	COMPASS INSTL	1		
1	MS33737-9	.NUT	4		
2	MS35214-29	.SCREW	4		
3	MC-NS5/A	.COMPASS	1		
(ALTERNATE PART)					
3	C2300DL4-24B	.COMPASS	1		
4	AN5800-1	.HOLDER ASSY	1		
5	AN5823-1	..CARD	1		
	206-070-105-001	THERMOMETER INSTL	1		
6	MS28028-2	.THERMOMETER (REPLACED BY 206-075-624-001)	1		
6	206-075-624-001	.THERMOMETER (REPLACES MS28028-2)	1		
	206-070-590-001	HOURLMETER INSTL	1		
7	M5612-15	.HOURLMETER (REPLACED BY 56493)	1		A
7	56493	.HOURLMETER (REPLACES M5612-15)	1		A
8	206-070-689-001	.DECAL (HOUR)	1		A
9	206-070-689-003	.DECAL (METER)	1		A
USABLE ON CODES					
	CODE	MODEL	SERIAL NUMBER		
	A	206A/B/III	584 - SUB		
<p>1) UNLESS A USABLE ON PART NUMBER IS LISTED IN THE ITEM NAME COLUMN; NO CODE INDICATES THE PART APPLIES TO ALL SERIAL NUMBERS.</p> <p>2) IF THE SERIAL NUMBER IS BLANK THE PART APPLIES TO ALL SERIAL NUMBERS FOR THAT MODEL.</p>					

