

BHT-206B-FMS-28

FLIGHT MANUAL SUPPLEMENT

BELL MODEL 206B JET RANGER II

FUEL PRESSURE GAGE
206-075-676

FAA APPROVED
10 DECEMBER 1984

This supplement shall be attached to the Model 206B Jet Ranger II Flight Manual when the 206-075-676 Fuel Pressure Gage has been installed.

The information contained herein supplements the information of the basic Flight Manual. For Limitations, Procedures, and Performance Data not contained in this supplement, consult the basic Flight Manual.

Bell Helicopter **TEXTRON**

A Subsidiary of Textron Inc.

POST OFFICE BOX 482 • FORT WORTH, TEXAS 76101

BHT-206B-FMS-28
FAA APPROVED

LOG OF PAGES

Page		Revision No.
Title0
1-20
3 / 40

LOG OF REVISIONS

No.	Date
Original	10 December 1984

MANAGER *H. M. Hill*

for AIRCRAFT CERTIFICATION DIVISION
FEDERAL AVIATION ADMINISTRATION
DEPARTMENT OF TRANSPORTATION
SOUTHWEST REGION, FORT WORTH, TEXAS

NOTE: Revised text is indicated by a black vertical line.
Insert latest revision pages; dispose of superceded pages.

**BHT-206B-FMS-28
FAA APPROVED**

INTRODUCTION

This supplement provides an extension of the minimum temperature limit for the use of Type A, A-1, or JP-5 fuel to -32°C (-25°F).

Also presented are the minimum fuel pressure and instrument marking requirements when operating with these fuels at temperatures below -18°C (0°F).

Section 1

OPERATING LIMITATIONS

POWER PLANT LIMITATIONS

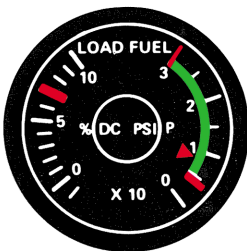
FUEL LIMITATIONS

Turbine fuel ASTM D-1655, Type A or A-1, or MIL-T-5624, Grade JP-5 limited to ambient temperatures of -32°C (-25°F) and above.

FUEL PRESSURE LIMITS

Minimum for use of Type A, A-1, or JP-5 fuel, - 8 PSI
or any mixture containing one of these, at
ambient temperature below -18°C (0°F)

INSTRUMENT MARKINGS



LOADMETER

70% Maximum

FUEL PRESSURE

4 PSI Minimum

4 to 30 PSI Continuous Operation

8 PSI Minimum - Type A, A-1, or JP-5 fuel
below -18°C (0°F)

206075-240

