



HN-151

TECHNICAL BULLETIN

DATE: 15 JANUARY 1980
PAGE 1 OF 5

SUBJECT: INSTALLATION OF CABIN HEAT DUCT (FIBER GLASS) ASSEMBLIES,
PN 369D22009-101 AND PN 369D22009-103

MODELS AFFECTED: All 500 Model 369H Series Helicopters equipped with PN
369H90020-515 Manually Controlled Heating System

TIME OF COMPLIANCE: -At owners and operators discretion, when duct replacement is
required

PREFACE: The information given in this Service Information Notice lists instruction for
replacement of the existing Lexan-type cabin heat duct, PN 369H92475-83,
with a new fiberglass-type heat duct, PN 369D22009-and for replacement of
existing 369H92475-31 duct with a new fiberglass duct assembly, PN
369D22009-103. The fiberglass duct configuration is designed to provide
greater resistance against heat, deformation and wear

It is to be noted that PN 369H4535-7 and PN 369H4535-9 control cable as-
semblies must be utilized with the new 369D22009-101 fiberglass duct con-
figuration. Existing PN 369H4535-3 and -5 control cable assemblies must
therefore be replaced, or reworked per this Notice to the 369H4535-7 and
-9 configurations, to be compatible with the new fiber-glass duct installa-
tion.

REFERENCE PUBLICATIONS:

500 Series - Basic HMI, Issued 1 October 1972; Revision No. 7,
15 December 1976

500 Series - HMI Appendix A, Issued I October 1972; Revision No. 4,
15 December 1974

DATE: 15 JANUARY 1980
PAGE 2 OF 5

TECHNICAL BULLETIN

PARTS LIST

<u>Nomenclature</u>	<u>Part No.</u>	<u>Qty</u>	<u>Mfr</u>
Duct, cabin heat	369D22009-101	1	HH
Duct, cabin heat	369D22009-103	1	HH
Control Assembly - Cabin Heat	369H4535-7*	1	HH
Control Assembly - Engine Anti-Ice	369H4535-9*	1	HH

*369H4535-3 and 369H4535-5 control assemblies used with 369H92475-83 cabin heat duct assembly may be reworked to 369H4535-7 and -9 configurations required for use with new 369D22009-101 heating duct assembly. See Figure I for rework dimensions.

PROCEDURE

- a. Remove outer box from 369H92475-83 cabin heat duct and canopy frame. (Refer to referenced HMI Appendix A.)
- b. Remove hardware securing heating and anti-ice control cable assemblies to heat duct; remove -83 heat duct assembly. Remove 369H92475-31 cabin heat (lower) duct assembly. (See Figure 1.)
- c. Using file or equivalent, rework control handle shafts to provide detents, per dimensions shown in Figure 1.
- d. Install new PN 369D22009-103 and 369D22009-101 fiberglass heat duct & assemblies.
- e. Install control cable assemblies to new -101 duct assembly; secure clamps and position retainers with hardware as shown.
- f. Adjust spring plunger in position retainers so that 5 to 8 pounds of force is required to pull 369H4535-7 and -9 controls out of locked position in detents.
- g. Remove aft bulkhead access cover: open plenum chamber access door. (Refer to Section 2 of Basic HMI.



TECHNICAL BULLETIN

DATE: 15 JANUARY 1980
PAGE 3 OF 5

h. Adjust preload of new PN 369H4535-7 and -9 control assemblies as follows: (See Figure 1.)

1. Remove clevis from level of applicable valve and loosen jam nut above clevis.
 2. With handle of 369H4535-7 or -9 control assembly in CLOSED position, adjust control cable clevis to initially align holes in clevis and valve lever.
 3. After initial adjustment has been made, turn clevis 1 to 2 turns, in extension, to achieve offset as shown.
 4. Tighten jam nut and install clevis pin.
- i. Perform operational check of heating system, per referenced HMI Appendix. A. Reinstall aft bulkhead access cover and interior trim.
- j. Perform operational check of anti-icing system, per Section 11 of Basic HMI. Close plenum chamber access door.
- k. Install new PN 369D22009-45 cover. with hardware as shown.

WEIGHT AND BALANCE: Weight and balance not affected.

FAA APPROVED

TECHNICAL BULLETIN

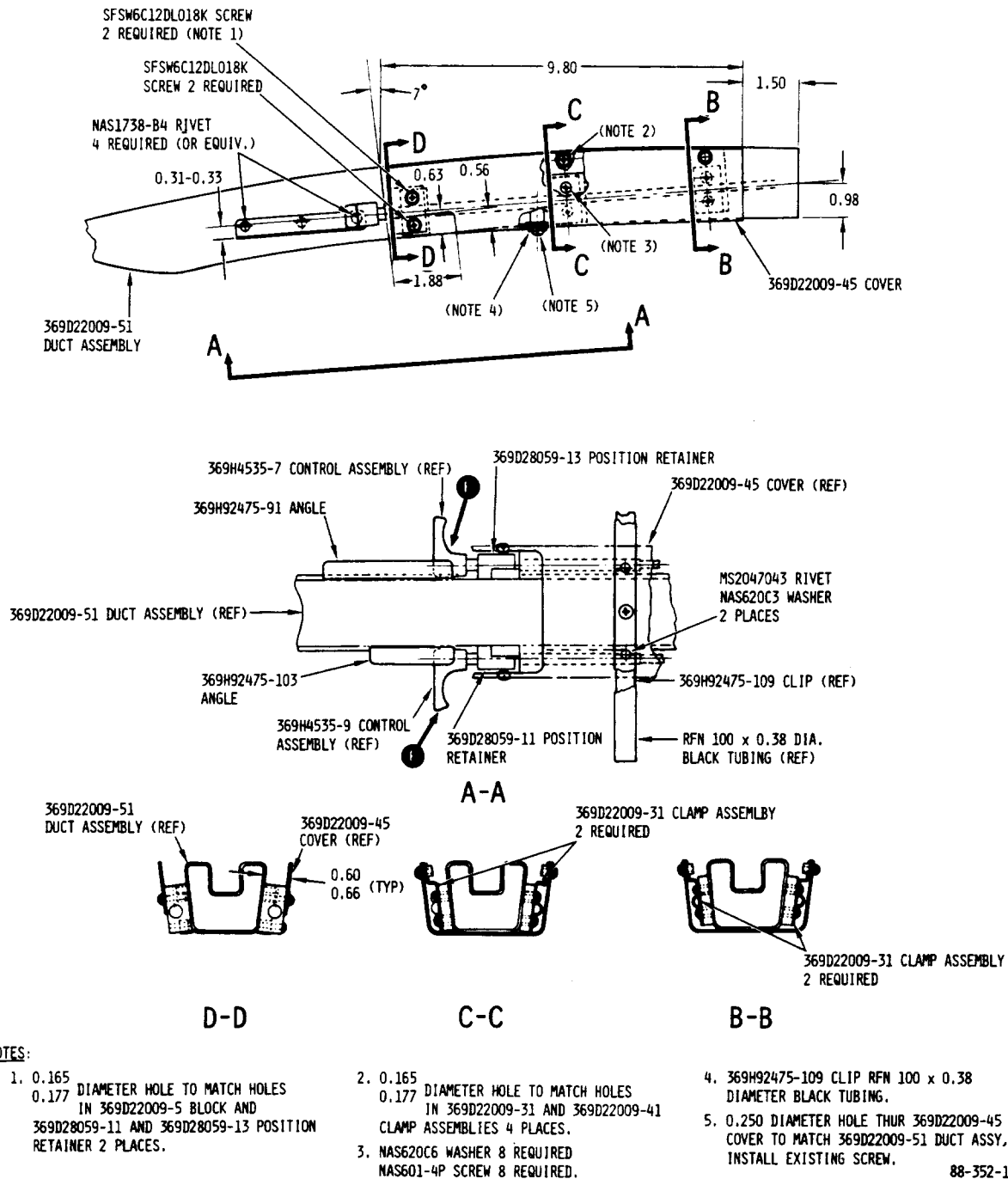
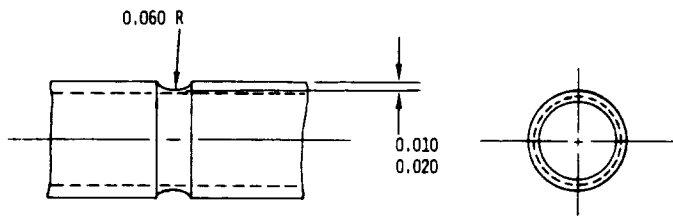
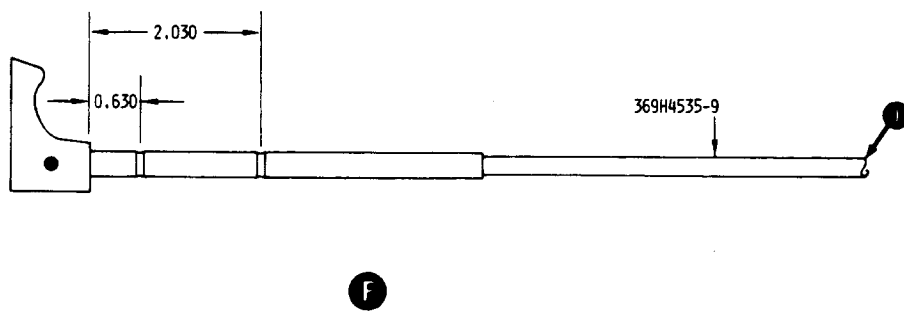
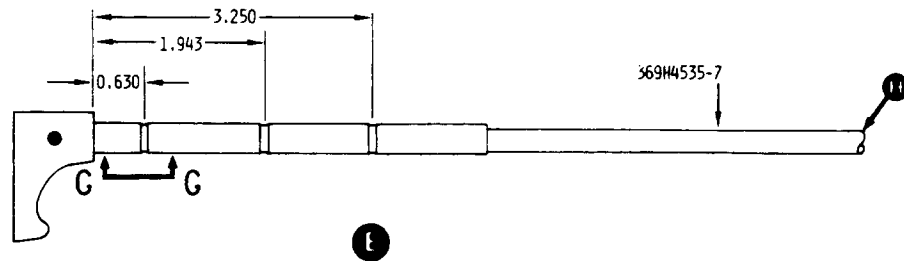


Figure 1. Installation of Fiberglass Cabin Heat Ducts,

PN 369D22009-101 and -103 (Sheet 1 of 2)

TECHNICAL BULLETIN

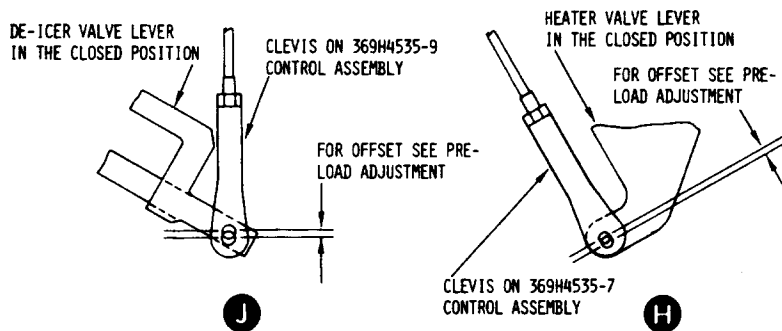
DATE: 15 JANUARY 1980
PAGE 5 OF 5



G-G
TYPICAL FOR DETENTS ON
369H4535-7 AND -9

PRE-LOAD ADJUSTMENT

WITH THE HANDLE OF THE 369H4535-7 OR -9 CONTROL ASSEMBLY IN THE CLOSED POSITION DETENT, ADJUST THE CONTROL CABLE CLEVIS TO INITIALLY ALIGN HOLES IN THE CONTROL CABLE CLEVIS AND THE VALVE LEVER OF APPLICABLE VALVE. AFTER INITIAL ADJUSTMENT HAS BEEN MADE, TURN CLEVIS 1/2 FULL TURNS, IN EXTENSION, TO ACHIEVE OFFSET AS SHOWN. TIGHTEN JAM NUT AND INSTALL MS20392-2C11 CLEVIS PIN.



88-352-2

Figure 2. Figure 1. Installation of Fiberglass Cabin Heat Ducts, PN 369D22009-101 and -103 (Sheet 2 of 2)