

*McDonnell Douglas*  
*Helicopter Company*  
**SERVICE INFORMATION NOTICE**

NOTICE NO. HN-58

DATE 29 May 1973

PAGE 1 OF 4

**SUBJECT:** INSTALLATION OF SCR ASSEMBLY - AUTO-REIGNITION  
MODIFICATION KIT PN M50036

**MODELS AFFECTED:** All 369H Series Helicopters with 369H90118, 369H90118-501  
or 369H90118-503 Auto-Reignition System Kit Installed

**TIME OF COMPLIANCE:** At owner's and operator's discretion.

**PREFACE:** The information given in this Service Information Notice lists a procedure for modifying the above affected Auto-Reignition Kits installed on 369H Series helicopters, by incorporating an SCR assembly to reduce the current supplied to the torque pressure switch. The reduction in current is designed to preclude arcing between the switch points, and ensure a proper engine power out signal and automatic engine restart.

**Reference**

500 Series - Basic HMI, Issued 1 October 1972; Revision 1, 1 April 1973  
500 Series - HMI Appendix A, Issued 1 October 1972  
Owners Manual Supplement, Automatic Engine Reignition, PN 369H90118,  
Approved 28 May 1970 (DOA)

Product Support Department

*McDonnell Douglas*  
*Helicopter Company*

### PARTS LIST

<u>Nomenclature</u>	<u>Part No.</u>	<u>Qty</u>	<u>Mfr</u>
SCR Assembly	369H92056	1	Hughes
Screw	MS51957-28	2	Commercial
Washer	AN960PD6	2	Commercial
Terminal	MS25036-149	1	Commercial
Terminal	MS25036-102	1	Commercial
Splice	MS25181-1	2	Commercial
Splice, Knife	32445	1	Commercial
Wire	AWG 20 MIL-W-5086 Type II	A/R	Commercial
Tie Straps	SST1M*	A/R	Ty-Rap
Sealant	Silastic No. 732*	-	Dow Corning

\*Primary selection - any equivalent material may be used as an alternate selection.

### TOOLS AND EQUIPMENT

Drill, portable  
Drill bit - 0.169/0.177 inch diameter

### PROCEDURE

- a. Check that all electrical power is OFF; ensure that BATT-OFF-EXT switch is in OFF position.
- b. Remove pilot compartment floor access doors; disconnect battery.
- c. Remove right front cargo compartment.
- d. Drill two 0.169/0.177 inch diameter holes in centerbeam assembly at dimensions shown in Figure 1.
- e. Clean mounting surface area to bare metal; install SCR assembly to centerbeam assembly with screws and washers.
- f. Remove auto-reignition switch panel assembly and ash try and lighter assembly from bottom of instrument console.

g. Install electrical wiring in accordance with wiring diagram and as follows (also refer to HMI Appendix A for existing wiring diagram):

- (1) Open engine access doors and disconnect existing wire No. J503A20 and wire No. J503B20 from terminal CR1-1 of diode isolator assembly on starter relay. Disconnect other end of wire No. J503B20 from splice (to existing wire No. J503C20) in engine compartment. Discard wire No. J503B20.
- (2) Splice existing wire No. J503A20 (from pressure switch connector J302) to knife splice SP18 at end of existing wire No. J503C20 (from display module) in engine compartment. Use 32445 knife splice.
- (3) Route new wire No. J502G20 through right-hand conduit and connect to terminal CR1-1 of diode isolator assembly using MS25036-102 terminal lug; splice other end of wire to wire No. J502F20 (from SCR assembly) using MS25181-1 splice.
- (4) Connect wire No. J502E20 (from SCR assembly) to switch/circuit breaker CB124-2 in switch panel assembly, using MS25036-149 terminal lug.
- (5) Splice wire No. J503D20 (from SCR assembly) to existing wire No. J503C20 (from display module). Use MS25181-1 splice.

h. Reseal right-hand conduit with Silastic No. 732, both ends.

i. Check SCR assembly and wiring installation for discrepancies.

j. Reinstall switch panel assembly and ash tray and lighter assembly to instrument console.

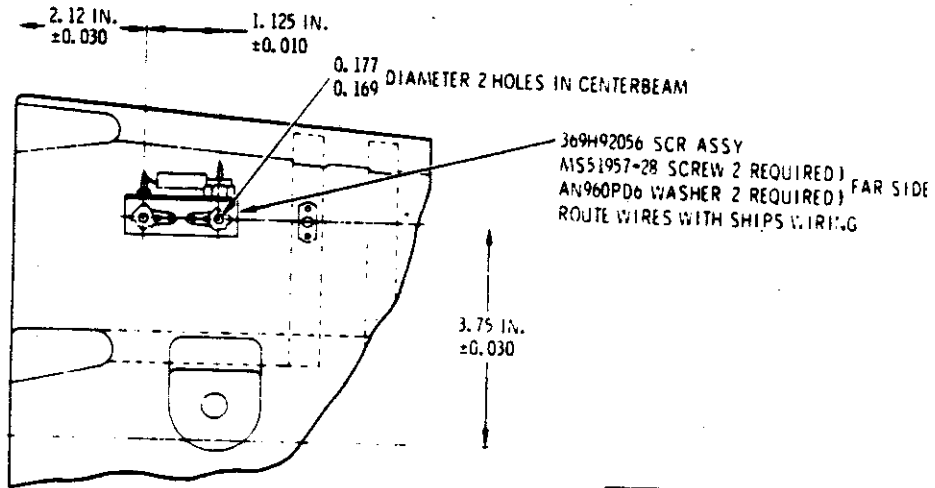
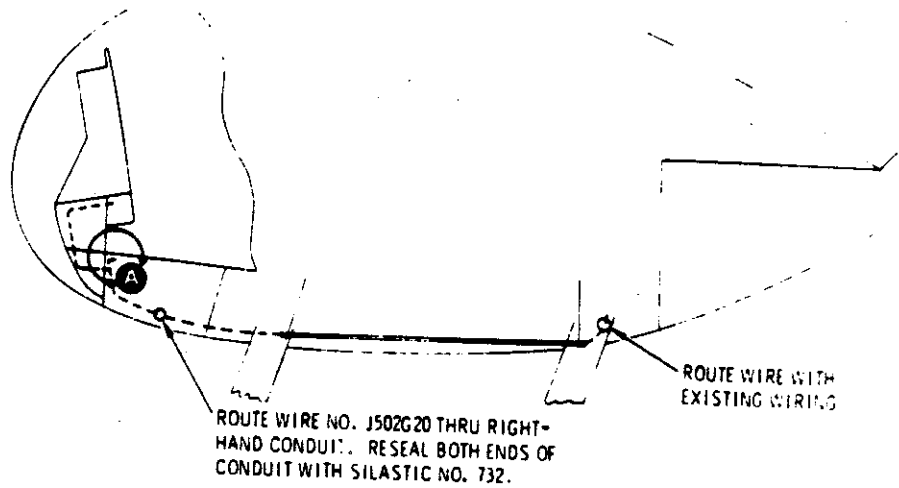
k. Reconnect battery.

l. Perform a preflight ground check of the auto-reignition system, per referenced Owners Manual Supplement.

m. Install right front cargo compartment and pilot compartment floor access doors; close engine access doors.

#### WEIGHT AND BALANCE DATA

Weight and balance not affected.



WIRE NO.	FROM	TERMINATION	TO	TERMINATION
J502E 20	369H92056	---	CB 124-2	IMS25036-124
J502F 20	369H92056	---	SPLICE	IMS25181-11
J502G 20	SPLICE	REF	CR1-1	IMS25036-102
J503A 20	J302-B	---	SPLICE	32445
J503D 20	369H92056	---	SPLICE	IMS25181-11

STA. 44.65

A

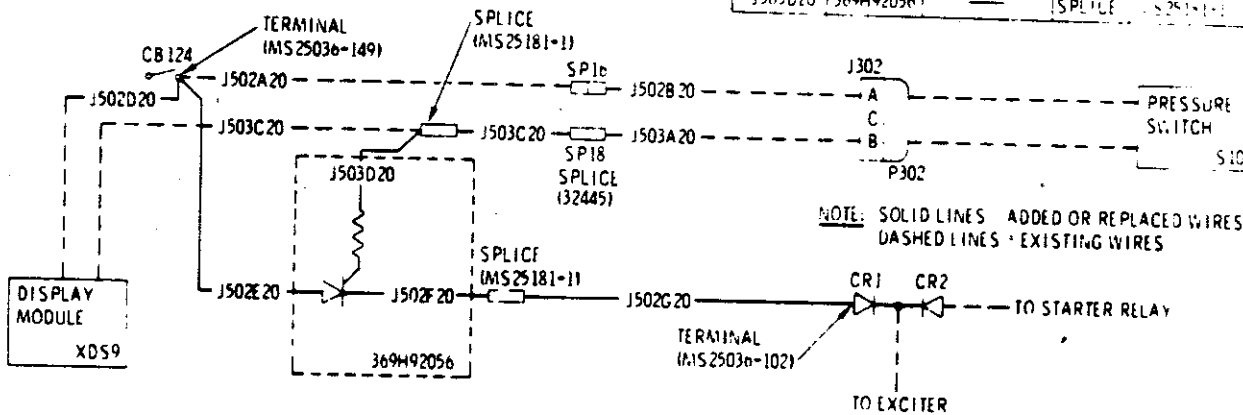


Figure 1. Installation of SCR Assembly - Auto-Reignition Modification Kit PN M50036