

*McDonnell Douglas
Helicopter Company*

NOTICE NO. HN-91

DATE 23 Jan 1976

PAGE 1 OF 4

SERVICE INFORMATION NOTICE

FAA APPROVED

MANDATORY

MANDATORY

MANDATORY

SUBJECT: MODIFICATION FOR SEATING AND BELTS FOR (4) KIT INSTALLATION,
PN 369H90035-501 - ADDITION OF HEAD AND BACK RESTRAINT PANELS

MODELS AFFECTED: All Model 500 Series Helicopters with Subject Seating and Belts for (4) Kit Installed Prior to Date of this Notice
All Subject Kits in Spares Inventory Prior to Date of this Notice

TIME OF COMPLIANCE: Shall be accomplished prior to next flight with aft facing seat(s) occupied
Shall be accomplished at installation of subject kit(s) in Spares Inventory

PREFACE: The information given in this Service Information Notice lists a procedure for installing head and back restraint panels for aft-facing occupants utilizing the seating and belts for (4) on the floor.

Installation of the restraint panels lifts the requirement for placard installation per FAA Airworthiness Directive 75-09-17, Amendment 39-2191 effective May 2, 1975; and permits take off and landing with aft facing seats occupied.

Reference

500 Series - Basic HMI, Issued 1 October 1972; Revision No. 5, 15 June 1975

500 Series - HMI Appendix A, Issued 1 October 1972; Revision No. 4, 15 Dec 1974

Product Support Department

*McDonnell Douglas
Helicopter Company*

NOTICE NO. HN-91
DATE: 23 Jan 1976
PAGE: 2 of 4

PARTS LIST

<u>Nomenclature</u>	<u>Part No.</u>	<u>Qty</u>	<u>Mfr</u>
Restraint Panel Assy (RH)	369H90035-19	1	HH
Restraint Panel Assy (LH)	369H90035-17	1	HH
Bracket Assy	369H90035-9	4	HH
Bracket Assy	369H90035-7	2	HH
Bracket Assy	369H90035-5	2	HH
Rivet	MS20470AD4	A/R	Commercial
Rivet	NAS1398B4-2	8	Commercial
Screw	NAS514P1032-8	8	Commercial
Washer	5724-17	8	Commercial

TOOLS AND EQUIPMENT

Drill motor - portable
Drill bit - #30
Drill bit - 0.217/0.229 inch diameter
Rivet gun - For Driven Rivets
Hand Riveter #G-36 and Puller #H-611

Cherry Rivet Div
Townsend Co.
1224 E. Warner
Santa Ana, CA

MODIFICATION PROCEDURE

- a. Remove aft compartment cushion seats.

NOTE

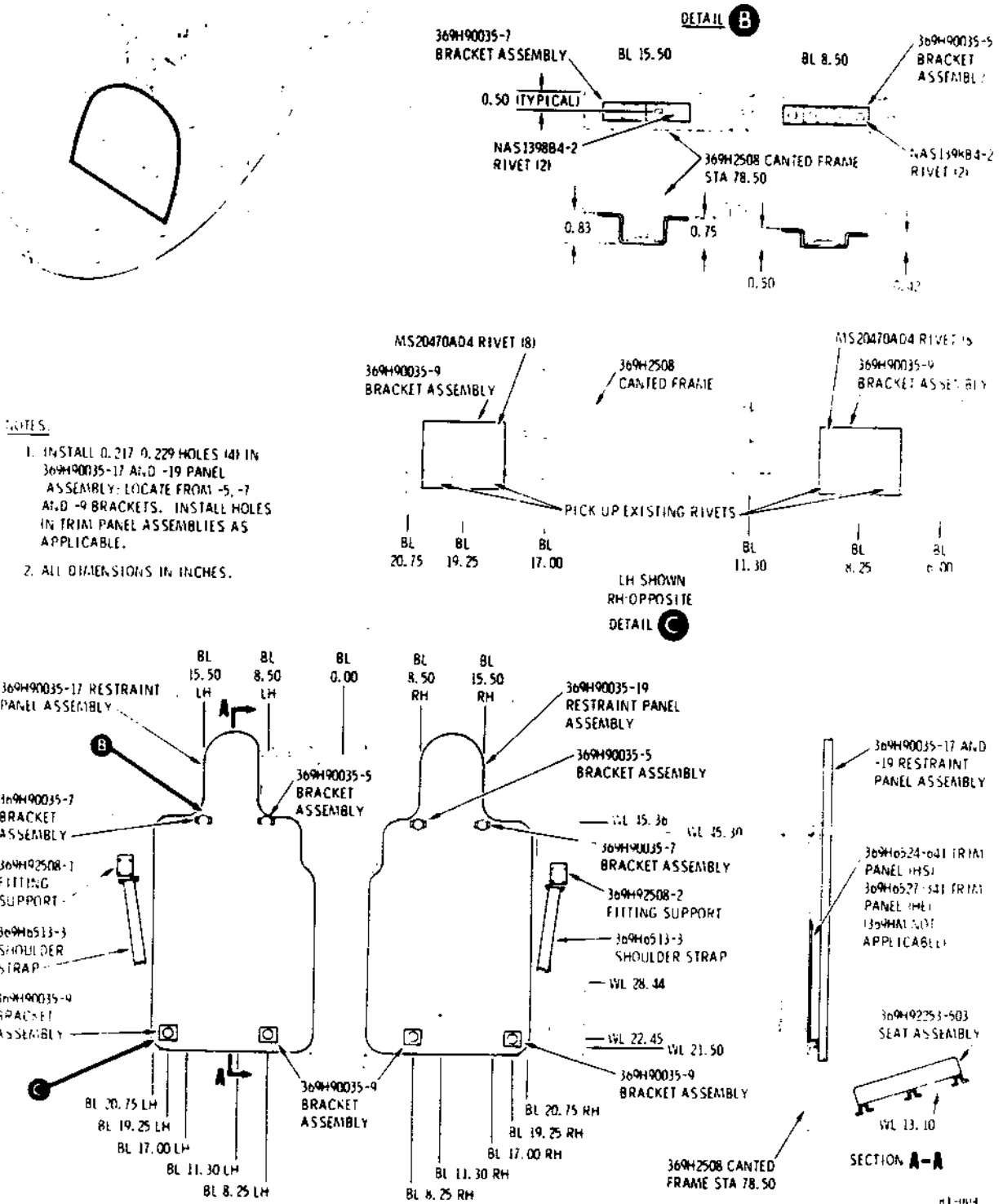
Step b not applicable to HM helicopters.

- b. Remove shoulder straps from shoulder harness fitting, LH and RH sides of Station 78.50 canted frame bulkhead; remove cap fitting from LH and RH shoulder harness fitting; remove aft compartment forward trim panel.

- c. Remove or displace aft compartment seat belt assemblies.

- d. Install 369H90035-9 bracket assemblies (two each LH and RH sides) on Station 78.50 canted frame bulkhead lower section at WL 22.45 and BL 8.25 and 19.25. Use MS20470AD4 rivets. (See Figure 1, Detail C.)

- e. Install 369H90035-7 bracket assemblies (one each LH and RH sides) on channel of canted frame bulkhead upper section at WL 45.30 and BL 15.50. Use NAS1398 B4-2 rivets. (See Figure 1, Detail B.)



- NOTES.**
1. INSTALL 0.217 0.229 HOLES (4) IN 369H90035-17 AND -19 PANEL ASSEMBLY. LOCATE FROM -5, -7 AND -9 BRACKETS. INSTALL HOLES IN TRIM PANEL ASSEMBLIES AS APPLICABLE.
 2. ALL DIMENSIONS IN INCHES.

Figure 1. Installation of Head and Back Restraint Panels and Attach Hardware

NOTICE NO. HN-91
DATE: 23 Jan 1976
PAGE: 4 of 4

f. Install 369H90035-5 bracket assemblies (one each LH and RH sides) on same channel at WL 45.30 and BL 8.50. Use NAS1398B4-2 rivets.

g. Drill four 0.217/0.229 inch diameter holes in aft compartment forward trim panel, as applicable; and in 369H90035-17 and -19 restraint panel assemblies. Locate holes from installed 369H90035-5, -7 and -9 bracket assemblies.

h. Reinstall aft compartment forward trim panel, as applicable.

i. Install 369H90035-17 and -19 restraint panel assemblies on bracket assemblies, using NAS514P1032-8 screws and 5724-17 washers.

j. Reinstall cap fittings on shoulder harness fittings, as applicable.

k. Reinstall aft compartment cushion seats and belt assemblies.

l. Remove placard, "DO NOT OCCUPY FOR TAKEOFF AND LANDING", above aft facing seat cushion, LH and RH sides.

m. Record compliance with this Service Information Notice in Compliance Record of helicopter Log Book.

WEIGHT AND BALANCE DATA

ADD: 14.1 lb at 85.2 inch arm (369H90035-17 and -19 Restraint Panel
Assemblies)

0.6 lb at 81.3 inch arm (369H90035-9 Bracket Assemblies)

0.5 lb at 88.1 inch arm (369H90035-5 and -7 Bracket Assemblies)