



# TECHNICAL BULLETIN

DATE: 24 JULY 1972

PAGE 1 OF 3

**/// MANDATORY ////////////////////////////////////// MANDATORY ////////////////////////////////////// MANDATORY ///**

## REWORK – 369H2048 DOOR LATCHING SYSTEM (AUTOLATCHING)

### 1. PLANNING INFORMATION

#### A. MODELS AFFECTED:

369HS Helicopter Serial No. 0201S and subsequent  
369HM Helicopter Serial No. 0201M and subsequent  
369HE Helicopter Serial No. 0201E and subsequent

#### B. PREFACE:

The information given in this Service Information Notice lists a procedure for modification of the subject door latching system. The rework is designed to provide added security of attachment of the exterior door handle to the latch shaft (spindle) for pilot and cargo doors.

#### C. TIME OF COMPLIANCE:

At Owners and Operators Discretion

#### D. WEIGHT AND BALANCE:

Weight and balance not affected

#### E. REFERENCE:

500 Series - Basic HMI, Issued 1 December 1971; Revision No. 1, 10 May 1972  
500 Series - HMI Configuration Supplement M, Revised 1 December 1971  
500 Series - HMI Configuration Supplement S/E, Revised 1 December 1971

**/// MANDATORY ////////////////////////////////////// MANDATORY ////////////////////////////////////// MANDATORY ///**

DATE: 24 JULY 1972  
 PAGE 2 OF 3

# TECHNICAL BULLETIN

**MANDATORY MANDATORY MANDATORY**

**F. PARTS LIST:**

REPLACEMENT PARTS/SUPPLIES			
Nomenclature	Part No.	Qty.	Source
Pin, spring		A/R	Commercial

**G. TOOLS AND EQUIPMENT:**

TOOLS AND EQUIPMENT Nut	
Nomenclature	Source
Drill motor, hand	Commercial
Drill bit (0.124 to 0.129 in. dia.)	Commercial

**2. REWORK PROCEDURE**

**NOTE:** Removal of exterior door handle and latch spindle is recommended to facilitate rework. Refer to Section 3 of Basic HMI.

- a. Using No. 30 drill bit, line drill through exterior door handle and door latch shaft (spindle) as shown in Figure 1.
- b. Reinstall latch shaft and exterior door handle, as required; install NAS561P4-16 spring pin through handle and shaft.
- c. Touch up finish with matching paint (Refer to applicable HMI Supplement).

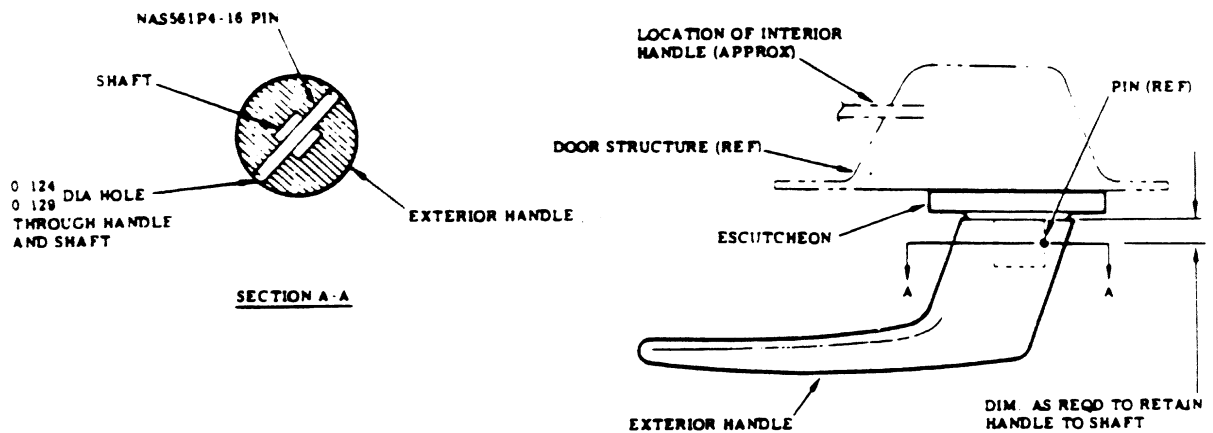
**MANDATORY MANDATORY MANDATORY**

# TECHNICAL BULLETIN

DATE: 24 JULY 1972

PAGE 3 OF 3

**MANDATORY** **MANDATORY** **MANDATORY**



00-061

**Figure 1. Modification -Door Latching System (Autolatching), Pilot and Cargo Doors**

Copyright 1999-2000 by MD Helicopters Inc.

*This document may be reproduced and distributed provided no fee is charged, the text is not modified, and this copyright notice is included.*

**MANDATORY** **MANDATORY** **MANDATORY**