

**McDonnell Douglas
Helicopter Company**
SERVICE INFORMATION LETTER

LETTER NO HL-30
DATE 12 JULY 1973
PAGE 1 OF 2

TO—All owners and operators of Hughes Helicopters

SUBJECT: REPLACEMENT OF BOOM FAIRING ASSEMBLY ON FIRST
PRODUCTION HELICOPTERS, SN 0001 THRU 0100

MODELS AFFECTED: 369H Helicopter Serial No. 0001 thru 0005
369HS Helicopters Serial No. 0001S thru 0100S
369HM Helicopter Serial No. 0001 thru 0004;
0005M thru 0100M


Reference

500 Series - Basic HMI, Issued 1 October 1972; Revision No. 2, 1 July 1973
500 Series - HMI Appendix D, Issued 1 September 1971

Due to the difference in design of the mast support structure used on the above affected first production helicopters, it is necessary, when installing a replacement boom fairing assembly, to modify and lengthen the 369H3017 upper longerons to permit attachment at the mast support structure.

The method for extending the 369H3017 upper longerons with added sections of 369A3011 longerons is illustrated on page 2 of this letter. As shown, the bulb section of the 369H3017 longeron is removed, and a 0.060-inch radius applied to the added section of the 369A3011 longeron, so that the two pieces will nest together. Also, a section of existing 369A3011 longeron with the bulb section removed is used as a shim at the forward end of the extended 369A3011 longeron, to ensure a proper fit when riveted to the mast support structure. No additional rivets are added to the side of the longerons. The rivet spacing on the top of the longerons at the shim area is increased.

It is noted that modification of the 369H3017 upper longerons is not required when installing a replacement boom fairing assembly on later model helicopters, SN 0101 and subsequent. If further information is required, contact your Hughes Service Center or Field Service Representative.



Edward Koch, Manager
Customer Service Department
Hughes Helicopters
division of Summa Corporation

Product Support Department

**McDonnell Douglas
Helicopter Company**

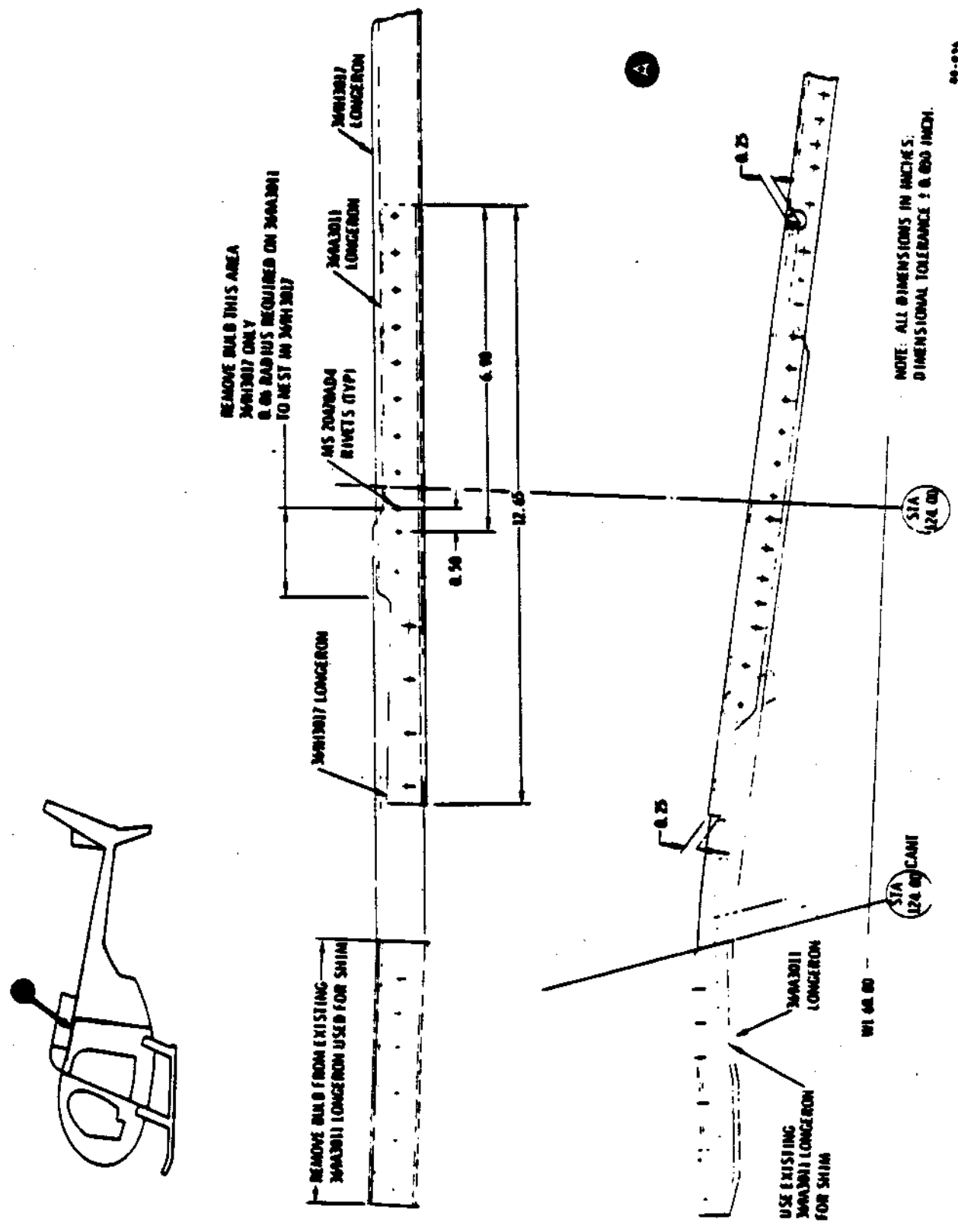


Figure 1. Modification and Replacement of Boom Fairing Assembly