



# Temporary Revision

**Manual:** CSP-IPC-4, Illustrated Parts Catalog  
**Models:** 369D/E/F/FF - 500/600N Helicopters  
**Issued:** 20 March 1998  
**Revision 12:** 15 January 2007  
**TR09-001:** 19 June 2009

---

## FILING INSTRUCTIONS:

1. Before you put this temporary revision in the manual, make sure the manual contains all the revisions from before. Look at the last revision List of Effective Pages.



Do not put this temporary revision in the manual, if the manual does not contain all the revisions from before.

2. To include this temporary revision in the manual, remove old pages and put in new pages as shown below.

Temporary Revision Number/Date	Section	Page	Page Revision
TR09-001/19 June 2009	62-10-00	3	TR09-001
		4	Revision 11
		9 thru 11	TR09-001
		12	Revision 11
	62-20-00	3	Revision 10
		4 and 5	TR09-001
		6	Revision 12

---

**This Page Intentionally Left Blank**

MD Helicopters Inc.  
ILLUSTRATED PARTS CATALOG

CSP-IPC-4

I L L	Fig. No.	Item No.	Part Number	Description	Qty. per Assy.	Used on Code	Model / Serial No. From - To
	1		369D21120-505	Blade Assy, Main ..... (HTC 500P2100-105) Ref 62-20-00 For NHA May Be Intermixed In Any Combination With 369D21100-513/ -515/ -517/ -519/ -521/ -523 (NO BKDN)	REF		D E
	1		369D21120-503	Blade Assy, Main ..... (HTC 500P2100-103) Ref 62-20-00 For NHA May Be Intermixed In Any Combination With 369D21100-513/ -515/ -517/ -519/ -521/ -523 (NO BKDN) Replaced By 369D21120-505	REF		D E
	1		369D21120-501	Blade Assy, Main ..... (HTC 500P2100-101) Replaced By 369D21120-503	REF		D E
	1		369D21100-523	• Blade Assy, Main ..... Ref 62-20-00 For NHA May Be Mixed In Any Combination With 369D21100-513/ -515/ -516/ -517/ -519/ -521/ -523	REF		D    SPARES E    000537-000560
	1		369D21100-521	• Blade Assy, Main ..... Ref 62-20-00 For NHA Intrch With 369D21100-517 Made From -517 With 369D21116-1 Bushings Installed	REF		D    SPARES E    000001-000536
	1		369D21100-519	• Blade Assy, Main ..... Intrch With 369D21100-515/ -516 Made From -515 Or -516 With 369D21116-1 Bushings Installed	REF		D    SPARES E    000001-000508
	1		369D21100-517	• Blade Assy, Main ..... Ref 62-20-00 For NHA May Be Intermixed In Any Combination With 369D21100-513/ -515/ -516/ -517 Replaced By 369D21100-523	REF		D    000001-SUBS E    000509-000536
	1		369D21100-516	• Blade Assy, Main ..... Ref 62-20-00 For NHA Spares Replacement For 369D21100-513/ -515 May Be Intermixed In Any Combination With 369D21100-513/ -515/ -516/ -517 Replaced By 369D21100-517	REF		D    SPARES E    000449-000450 E    000463-000466 E    000470-000474 E    000479-000508
	1		369D21100-515	• Blade Assy, Main ..... Ref 62-20-00 For NHA May Be Intermixed In Any Combination With 369D21100-513/ -515/ -516/ -517 Replaced By 369D21100-517	REF		E    000001-000508
	1		369D21100-513	• Blade Assy, Main ..... Ref 62-20-00 For NHA May Be Intermixed In Any Combination With -513/ -515/ -516/ -517 Replaced By 369D21100-517	REF		D    SPARES E    000001-000508
	1		369D21100-512	• Blade Assy, Main ..... Ref 62-20-00 For NHA May Be Intermixed With 369D21100-505/ -509/ -511/ -512	REF		D    SPARES
	1		369D21100-511	• Blade Assy, Main ..... May Be Intermixed With 369D21100-505/ -509/ -511/ -512 Replaced By 369D21100-512	REF		D    SPARES D    001020-SUBS

MD Helicopters Inc.  
ILLUSTRATED PARTS CATALOG

I L L	Fig. No.	Item No.	Part Number	Description	Qty. per Assy.	Used on Code	Model / Serial No. From - To
	1		369D21100-509	• Blade Assy, Main ..... Ref 62-20-00 For NHA May Be Intermixed With 369D21100-505/ -509/ -511/ -512 (D Model SPARES) Replaced By 369D21100-511	REF		D 001020-SUBS MD 001020-SUBS
	1		369D21100-507	• Blade Assy, Main ..... Ref 62-20-00 For NHA	REF		MD 000677-001019
	1		369D21100-505	• Blade Assy, Main ..... Ref 62-20-00 For NHA May Be Intermixed With 369D21100-505/ -509/ -511/ -512 (D Model SPARES) Replaced By 369D21100-509	REF		D 000677-001019 MD 000677-001019
	1		369D21100-503	• Blade Assy, Main ..... Ref 62-20-00 For NHA	REF		MD 000677-001019
	1		369D21100-BSC	• Blade Assy, Main ..... Do Not Intermix With -505/ -509 For Replacement Order 369D21100-509 In Sets Only	REF		D 000001-000676 MD 000001-000676
	1	1	MS21042L4	•• Nut, Self Locking, Reduced Hexagon ...	5		
	1	2	AN960KD416L	•• Washer, Flat .....	AR		
	1	3	AN960KD416	•• Washer, Flat .....	AR		
	1	4	NAS6204-34	•• Bolt, Hex Head, Close Tolerance, Alloy Steel .....	2		
	1	5	NAS6204-27	•• Bolt, Hex Head, Close Tolerance, Alloy Steel .....	1		
	1	6	NAS1304-26	•• Bolt .....	1		
	1	7	NAS1304-24	•• Bolt .....	1		
	1	8	369A1113-25	•• Fitting Assy, Upper Root ..... Component Of 369D21100-523	1		
	1	8	369A1113-23	•• Fitting Assy, Upper Root ..... Component Of 369D21100-512/ -516/ -517 Blade Assy	1		
	1	8	369A1113-21	•• Fitting Assy, Upper Root ..... Component Of 369D21100-505/ -507/ -509/ -511/ -513/ -515 Blade Assy Intrch With 369A1114-11 Except For -513 And -515 Blade Assy	1		
	1	8	369A1113-11	•• Fitting Assy, Upper Root ..... Component Of 369D21100-505/ -507/ -509/ -511 Blade Assy Intrch With 369A1113-21 Fitting Assy Upper Root	1		
	1	8	369A1113	•• Fitting Assy, Upper Root ..... Component Of 369D21100-BSC/ -503/ -505/ -507/ -509 Blade Assy Replaced By 369A1113-11 For Replacement Order 369A1113-21	1		
	1	9	369A1115	••• Bushing ..... Component Of 369A1113-BSC/ -11/ -21/ -23 Fitting Assy	2		
	1	9	369D21115	••• Bushing ..... Component Of 369A1113-25 Fitting Assy, Upper Root	2		
	1	9	369D21116-1	•• Bushing ..... Component Of 369D21100-519/ -521 Blade Assy	2		

MD Helicopters Inc.  
ILLUSTRATED PARTS CATALOG

CSP-IPC-4

I L L	Fig. No.	Item No.	Part Number	Description	Qty. per Assy.	Used on Code	Model / Serial No. From - To
	2		369D21121-505	<ul style="list-style-type: none"> <li>• Blade Assy, Main ..... (HTC 500P2300-505) Ref 62-20-00 For NHA May Be Intermixed In Any Combination With 369D21102-501/ -503/ -517/ -519/ -521/ -523 (NO BKDN)</li> </ul>	REF		FF N 6XX KIT
	2		369D21121-503	<ul style="list-style-type: none"> <li>• Blade Assy, Main ..... (HTC 500P2300-503) Ref 62-20-00 For NHA May Be Intermixed In Any Combination With 369D21102-501/ -503/ -517/ -519/ -521/ -523 (NO BKDN) Replaced By 369D21121-505</li> </ul>	REF		FF N 6XX KIT
	2		369D21121-501	<ul style="list-style-type: none"> <li>• Blade Assy, Main ..... (HTC 500P2300-501) Replaced By 369D21121-503</li> </ul>	REF		FF N 6XX KIT
	2		369D21102-523	<ul style="list-style-type: none"> <li>•• Blade Assy, Main Rotor ..... Ref 62-20-00 And 62-20-60 For NHA May Be Intermixed In Any Combination With 369D21102-BSC/ -501/ -503/ -517/ -519/ -521/ -523</li> </ul>	REF		6XX 000016-SUBS N 000082-000094 FF 000128-000144 KIT 000002-SUBS
	2		369D21102-521	<ul style="list-style-type: none"> <li>•• Blade Assy, Main Rotor ..... Ref 62-20-00 For NHA May Be Intermixed In Any Combination With 369D21102-517/ -521/ -523 Made From -517 With 369D21116-1 Bushings Installed</li> </ul>	REF		N 000001-000081 FF 000001-000127 KIT 000002-SUBS
	2		369D21102-519	<ul style="list-style-type: none"> <li>•• Blade Assy, Main Rotor ..... Ref 62-20-00 For NHA May Be Intermixed In Any Combination With 369D21102-517/ -519/ -523 Made From -501 Or -503 With 369D21116-1 Bushing Installed</li> </ul>	REF		N 000001-000059 FF 000001-000102 KIT 000002-SUBS
	2		369D21102-517	<ul style="list-style-type: none"> <li>•• Blade Assy, Main Rotor ..... Ref 62-20-00 For NHA May Be Intermixed In Any Combination With 369D21102-BSC/ -501/ -503/ -517/ -519/ -521 Replaced By 369D21102-523</li> </ul>	REF		6XX 000003-000015 N 000060-000081 FF 000103-000127 KIT 000002-SUBS
	2		369D21102-503	<ul style="list-style-type: none"> <li>•• Blade Assy, Main Rotor ..... Ref 62-20-00 For NHA May Be Intermixed In Any Combination With 369D21102-BSC/ -501/ -503/ -517/ -519 Replaced By 369D21102-517</li> </ul>	REF		FF 000082-000083 FF 000086-000089 FF 000092-000102 KIT 000002-SUBS
	2		369D21102-501	<ul style="list-style-type: none"> <li>•• Blade Assy, Main Rotor ..... Ref 62-20-00 For NHA Intrch With 369D21102-BSC May Be Intermixed With 369D21102-BSC/ -503 Replaced By 369D21102-503</li> </ul>	REF		FF 000001-000061 FF 000084-000085 KIT 000002-SUBS
	2		369D21102-BSC	<ul style="list-style-type: none"> <li>•• Blade Assy, Main Rotor ..... Ref 62-20-00 For NHA Intrch With 369D21102-501 May Be Intermixed With 369D21102-501/ -503 Replaced By 369D21102-501</li> </ul>	REF		FF 000001-000126 KIT 000002-SUBS

MD Helicopters Inc.  
ILLUSTRATED PARTS CATALOG

I L L	Fig. No.	Item No.	Part Number	Description	Qty. per Assy.	Used on Code	Model / Serial No. From - To
	2	1	MS21042L4	••• Nut, Self Locking, Reduced Hexagon . .	5		
	2	2	AN960KD416L	••• Washer, Flat . . . . .	AR		
	2	3	NAS6204-34	••• Bolt, Hex Head, Close Tolerance, Alloy Steel . . . . .	2		
	2	4	AN960KD416	••• Washer, Flat . . . . .	AR		
	2	5	NAS6204-27	••• Bolt, Hex Head, Close Tolerance, Alloy Steel . . . . .	1		
	2	6	NAS1304-26	••• Bolt . . . . .	1		
	2	7	NAS1304-24	••• Bolt . . . . .	1		
	2	8	369A1113-25	••• FTG-Upper . . . . . Component Of 369D21102-523 Blade Assy	1		
	2	8	369A1113-23	••• FTG-Upper . . . . . Component Of 369D21102-503/ -517 Blade Assy	1		
	2	8	369A1113-21	••• FTG-Upper . . . . . Component Of 369D21102-BSC/ -501 Blade Assy	1		
	2	8	369A1113-11	••• FTG-Upper . . . . . Component Of 369D21102-BSC/ -501 Blade Assy Replaced By 369A1113-21	1		
	2	9	369D21116-1	••• Bushing . . . . . Component Of 369D21102-519/ -521 Blade Assy	2		
	2	9	369A1115-BSC	•••• Bushing . . . . . Component Of 369A1113-23 Upper Fitting. Use On 369D21102-517 Blade Assy	2		
	2	9	369D21115	••• Bushing . . . . . Component Of 369A1113-25 Fitting Assy, Upper Root. Use On 369D21102-523 Blade Assy	2		
	2	10	369A1114-25	••• FTG-Lower . . . . . Component Of 369D21102-523 Blade Assy	1		
	2	10	369A1114-23	••• FTG-Lower . . . . . Component Of 369D21102-503/ -517 Blade Assy	1		
	2	10	369A1114-21	••• FTG-Lower . . . . . Component Of 369D21102-BSC/ -501 Blade Assy	1		
	2	11	369D21116-1	••• Bushing . . . . . Component Of 369D21102-519/ -521 Blade Assy	2		
	2	11	369A1115-1	•••• Bushing . . . . . Component Of 369A1114-23 Lower Fitting Use On 369D21102-517 Blade Assy	2		
	2	11	369D21115	••• Bushing . . . . . Component Of 369A1113-25 Fitting Assy, Upper Root. Use On 369D21102-523 Blade Assy	2		

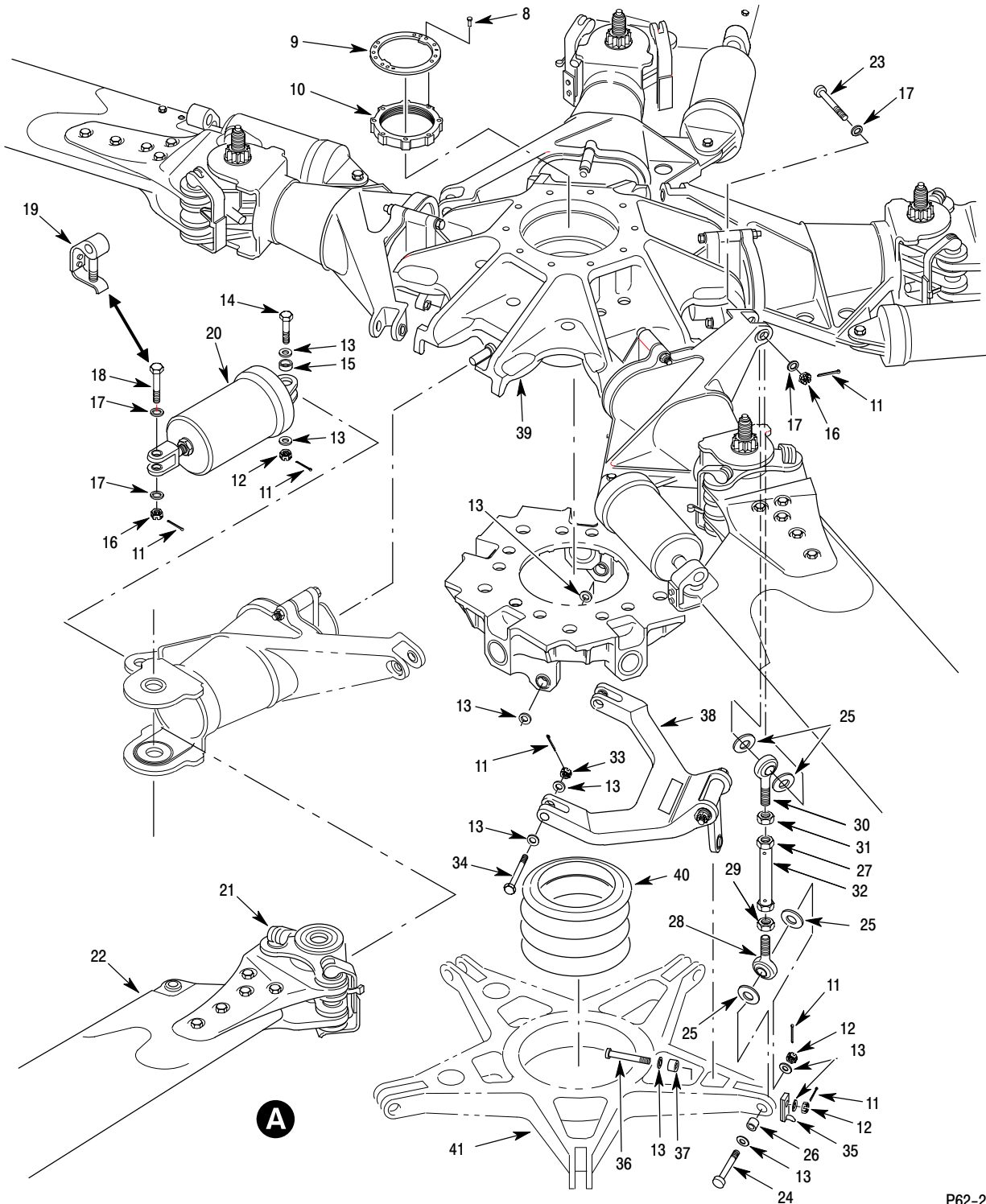
MD Helicopters Inc.  
ILLUSTRATED PARTS CATALOG

CSP-IPC-4

I L L	Fig. No.	Item No.	Part Number	Description	Qty. per Assy.	Used on Code	Model / Serial No. From - To
	2	12	369A1112-11	••• Fitting Assy .....	1		
	2	13	369A7951-15	•••• Bearing .....	1		
				Component Of 369A1112-11 Fitting Assy			
	2	14	NAS517-3-0	••• Screw .....	2		
	2	15	369D21155-BSC	••• Tip Cap-Fwd .....	1		
	2	16	MS20604AD3C2	••• Rivet-Blind .....	2		
	2	17	369D21156-BSC	••• Tip Cap-Aft .....	1		
	2	18	NAS1394C3L	••• Insert .....	2		
	2	19	369A1132-7	••• Weight, Fwd .....	1		
	2	20	369A1110-BSC	••• Weight-Aft Adj .....	1		
	2	21	369D21105-13	••• Abrasion Strip (36 Inch) .....	1		
				Component Of 369D21102-523 Blade Is Preferred Part For All Blade Assemblies			
	2	21	369D21105-11	••• Strip, Abrasion (36 Inch) .....	1		
				Use On 369D21102-517/ -519/ -521 Blade Assy Intrch With 369D21105-13			
	2	21	369D21105-9	••• Strip, Abrasion (36 Inch) .....	1		
				Use On 369D21102-BSC/ -501/ -503 Blade Assy Replaced By 369D21105-11			
	2	21	369D21105-7	••• Strip, Abrasion (36 Inch) .....	1		
				Use On 369D21102-BSC/ -501/ -503 Blade Assy Replaced By 369D21105-9			
	2	22	369D24027-BSC	••• S/N Plate .....	1		
	2	23	369D21107-BSC	••• Blade Sub-Assy .....	1		
				Use On 369D21102-BSC/ -501/ -503/ -519 Blade Assy			
	2	23	369D21107-21	••• Blade Sub-Assy .....	1		
				Use On 369D21102-517/ -521/ -523 Blade Assy			
	2	24	369D21109-BSC	••• Weight-Balance .....	1		
				Use On 369D21102-BSC/ -501/ -503/ -519 Blade Assy			
	2	24	369D21109-9	••• Weight-Balance .....	1		
				Use On 369D21102-517/ -521/ -523 Blade Assy			
	2	25	MS20426AD5	••• Rivet .....	6		

**This Page Intentionally Left Blank**





P62-2001-2E

Figure 1. Main Rotor Installation – 369D/E/FF/500N (Sheet 2 of 2)

MD Helicopters Inc.  
ILLUSTRATED PARTS CATALOG

I L L	Fig. No.	Item No.	Part Number	Description	Qty. per Assy.	Used on Code	Model / Serial No. From - To
	1		369D21000-503	• Main Rotor Instl . . . . . Not Procurable Not In Production	REF		
	1		369D21000-501	• Rotor Instl, Main . . . . . Not Procurable Ref 06-00-00 For NHA	REF		FF 000001-SUBS N 000001-SUBS
	1		369D21000-BSC	• Rotor Instl, Main . . . . . Not Procurable Ref 06-00-00 For NHA	REF		D 000001-SUBS E 000001-SUBS
	1	1	NAS603-14	•• Screw . . . . . Intrch With NAS1096-3-10 (For Reworked 369D21004-11 Fairing)	5		
	1	1	NAS1096-3-10	•• Screw-Hex Head, Recessed, Full Thread	5		
	1	2	AN960KD10L	•• Washer, Flat . . . . .	5		
	1	2	HS306-223	•• Washer, Flat . . . . . As Required	5		
	1	3	369D21004-11	•• Fairing, Hub . . . . .	1		
	1	4	369D24036	••• Decal, Screw Torque . . . . .	1		
	1	5	369D21005-21	•• Support Assy, Fairing . . . . .	1		
	1	6	MS20426AD3	••• Rivet, Solid, Countersunk . . . . .	10		
	1	7	MS21069L3	••• Nut, Self-Locking, Plate, Two Lug . . . . .	5		
	1	8	MS35276-261	•• Screw . . . . .	2		
	1	9	369A1023	•• Retainer . . . . .	1		
	1	10	369A1022	•• Locknut . . . . .	1		
	1	11	MS24665-153	•• Pin, Cotter . . . . .	23		
	1	12	AN320-4	•• Nut, Plain, Castellated . . . . . Altn MS17826-4	13		
	1	13	AN960KD416L	•• Washer, Flat . . . . .	AR		
	1	13	AN960KD416	•• Washer, Flat . . . . .	AR		
	1	14	NAS6204-13D	•• Bolt, Hex Head, Close Tolerance, Alloy Steel . . . . .	5		
	1	15	HS626-4-279	•• Bushing . . . . .	5		
	1	16	AN320-5	•• Nut . . . . .	10		
	1	17	AN960KD516L	•• Washer, Flat . . . . .	20		
	1	18	NAS6205-15D	•• Bolt . . . . .	5		
	1	19	369A1005-3	•• Pin, Damper . . . . . Intrch With MS24665-153, AN320-5, AN960KD516L and NAS6205-15D In Ship Sets Only	5		
	1	20	369D21400-503	•• Damper Assy . . . . . Intrch With M50452 In Sets Of Five Only (Do Not Intermix)	5		
	1	20	M50452	•• Damper Assy . . . . . Intrch With 369D21400-503 In sets Of Five Only (Do Not Intermix)	5		
	1	20	369D21400-501	•• Damper Assy . . . . . Replaced By M50452 Damper In Sets Of Five Only (Do Not Intermix)	5		
	1	21	369A1004-5	•• Pin, Blade . . . . . Life Limited Part	10		
	1	22	369D21121	•• Blade Assy, Main Rotor . . . . . Ref 62-10-00 For BKDN	5		FF N
	1	22	369D21102	•• Blade Assy, Main Rotor . . . . . Ref 62-10-00 For BKDN	5		FF N

MD Helicopters Inc.  
ILLUSTRATED PARTS CATALOG

CSP-IPC-4

I L L	Fig. No.	Item No.	Part Number	Description	Qty. per Assy.	Used on Code	Model / Serial No. From - To
	1	22	369D21120	•• Blade Assy, Main . . . . . Ref 62-10-00 For BKDN	5		D E
	1	22	369D21100	•• Blade Assy, Main . . . . . Ref 62-10-00 For BKDN	5		D E
	1	23	NAS6205-20D	•• Bolt . . . . .	5		
	1	23	NAS1105-20D	•• Bolt . . . . . Intrch With NAS6205-20D	5		
	1	24	NAS6204-17D	•• Bolt, Hex Head, Close Tolerance, Alloy Steel . . . . .	5		
	1	25	369D21012	•• Ring - Elastomer, Swashplate, Main Rotor . . . . .	20		
	1	26	HS626-4-326	•• Bushing . . . . .	5		
	1	27	369A1008-3	•• Rod Assy, Pitch Control . . . . . Replaced By 369D21008	5		
	1	27	369D21008	•• Rod Assy, Pitch Control . . . . .	5		
	1	28	369A7951-11	••• Bearing, Rod End . . . . .	1		
	1	29	NAS509-6	••• Nut, Drilled Jam, RH . . . . .	1		
	1	30	369A1011	••• Bearing, Rod End . . . . .	1		
	1	31	NAS509L6	••• Jam Nut, Drilled, LH . . . . .	1		
	1	32	369D21338-3	••• Rod . . . . .	1		
	1	33	MS17826-4	•• Nut, Self-Locking, Castellated, Hexagon	2		
	1	34	NAS6204-21D	•• Bolt, Hex Head, Close Tolerance, Alloy Steel Replaced By NAS6204-18D Bolt And MS17826-4 Nut	2		
	1	34	NAS6204-18D	•• Bolt, Hex Head, Close Tolerance, Alloy Steel . . . . .	2		
	1	35	369D29946-61	•• Interrupter . . . . . Replaced By 369D29946-131	1		
	1	35	369D29946-131	•• Interrupter . . . . .	1		
	1	36	NAS6204-26D	•• Bolt . . . . .	1		
	1	37	HS626-4-340	•• Bushing . . . . .	1		
	1	38	369D21001-501	•• Scissors Assy, Main Rotor . . . . . See Fig 3 For Further BKDN	1		
	1	39	369D21200-503	•• Hub Assy, Main Rotor . . . . . See Fig 2 and Fig 3 For BKDN	1		D, E, FF, N
	1	39	369D21200-501	•• Hub Assy, Main Rotor . . . . . Replaced By 369D21200-503	1		D, E, FF
	1	39	369D21200-BSC	•• Hub Assy, Main Rotor . . . . . Replaced By 369D21200-501	1		D, E, FF
	1	40	369D21011	•• Boot . . . . .	1		
	1	40	369A1001	•• Boot . . . . . Replaced By 369D21011 Boot	1		
	1	41	369D27609-503	•• Swashplate Assembly . . . . . Replaced By 369D27609-501 (Returned To -501 Mixer-Swashplate Configuration With Counter Weights)	1		D, E, FF, N

MD Helicopters Inc.  
ILLUSTRATED PARTS CATALOG

I L L	Fig. No.	Item No.	Part Number	Description	Qty. per Assy.	Used on Code	Model / Serial No. From - To
	1	41	369D27609-501	• • Swashplate Assembly .....	1		D, E, FF, N
	1	41	369D27609-BSC	• • Swashplate Assembly .....	1		D
				Replaced By 369D27609-503			