



Temporary Revision

Manual: CSP-IPC-4, Illustrated Parts Catalog
Models: 369D/E/F/FF - 500/600N Helicopters
Issued: 20 March 1998
TR11-001: 26 April 2011

FILING INSTRUCTIONS:

1. Before you put this temporary revision in the manual, make sure the manual contains all the revisions from before. Look at the last revision List of Effective Pages.



Do not put this temporary revision in the manual, if the manual does not contain all the revisions from before.

2. To include this temporary revision in the manual, remove old pages and put in new pages as shown below.

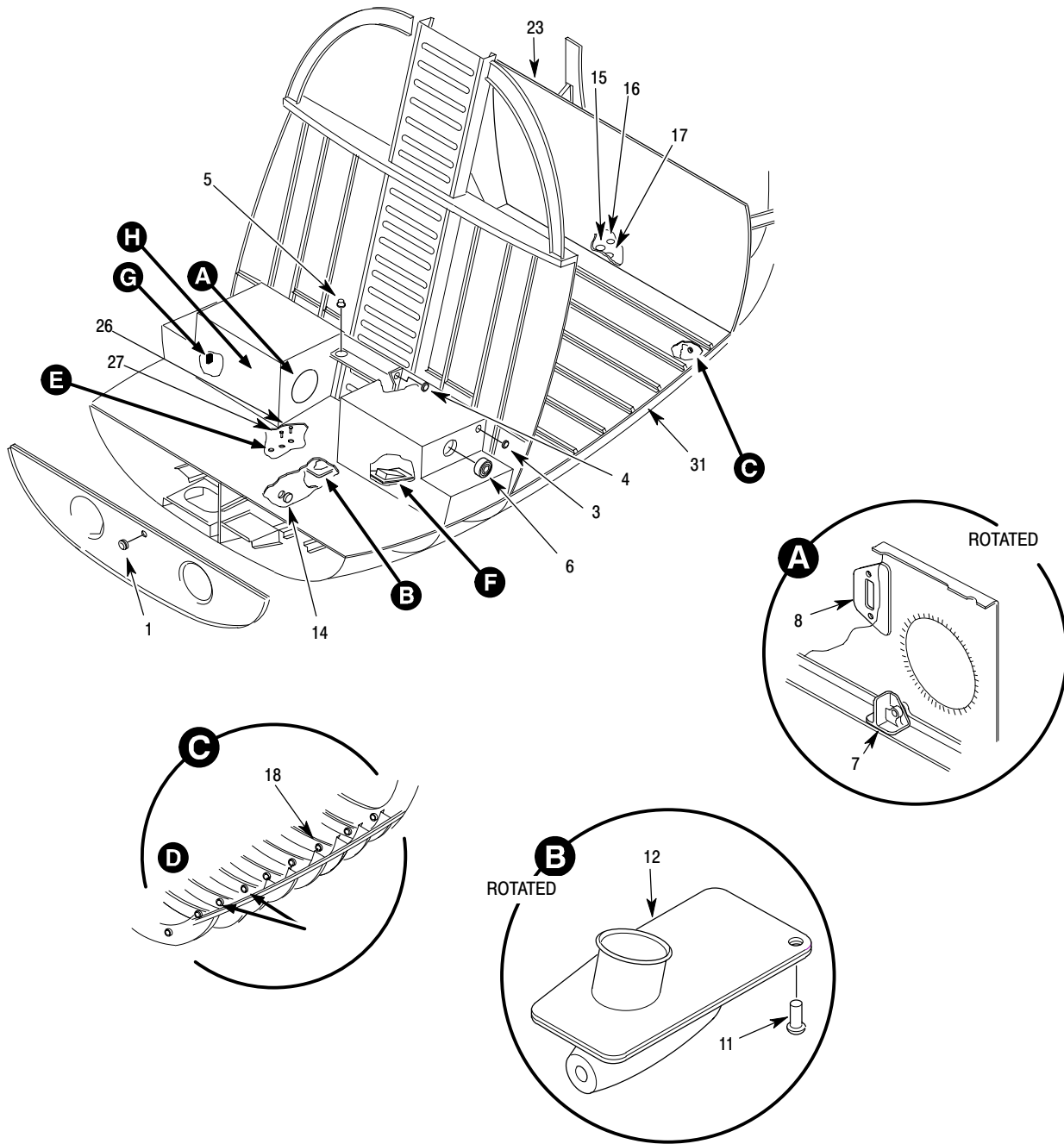
Temporary Revision Number/Date	Section	Page	Page Revision
TR11-001 / 26 April 2011	53-20-00	3	Original
		4 and 5	TR11-001
		6	Revision 1
		7	TR11-001
		8	Original

This Page Intentionally Left Blank

MD Helicopters Inc.
ILLUSTRATED PARTS CATALOG

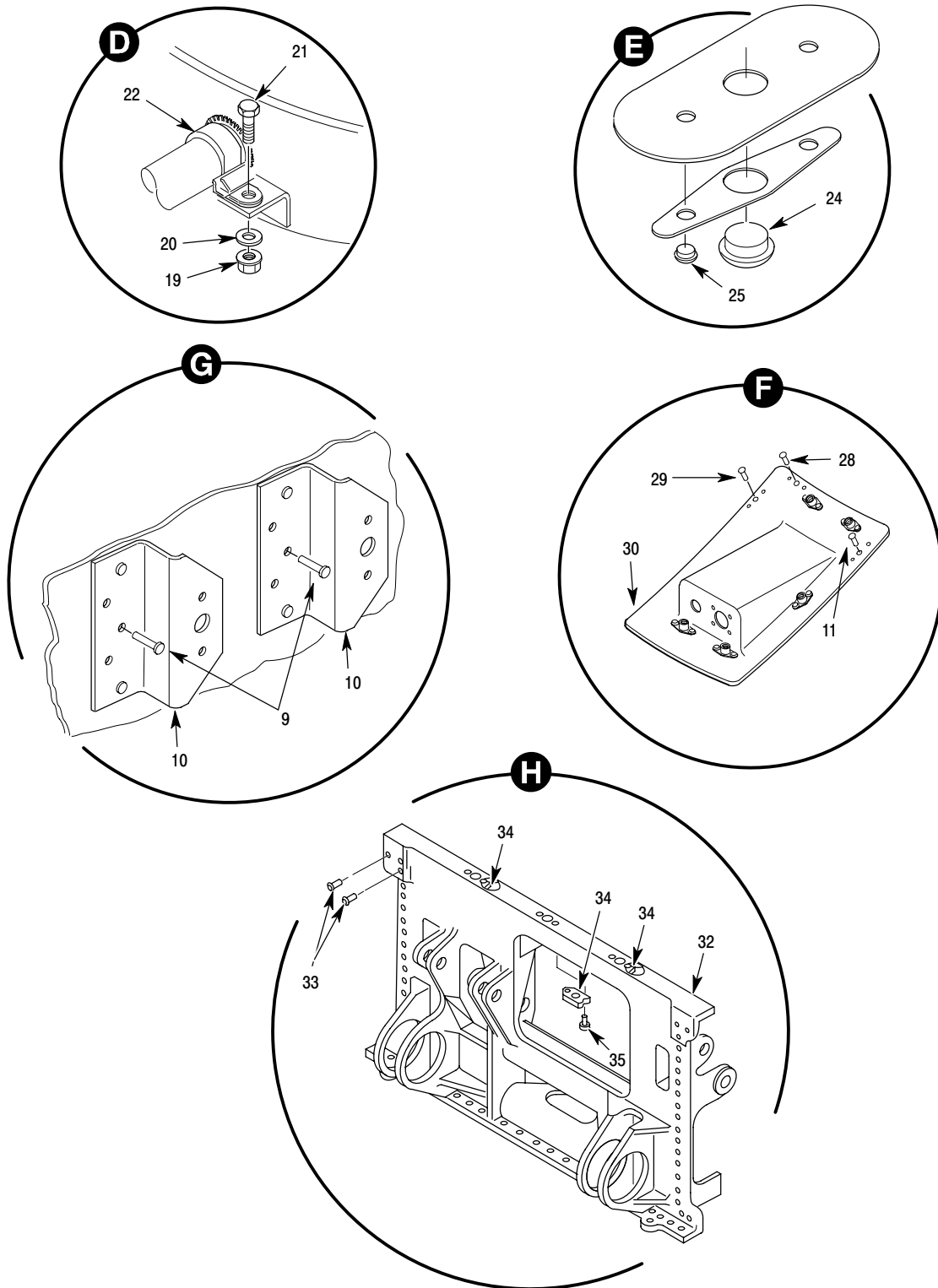
CSP-IPC-4

I L L	Fig. No.	Item No.	Part Number	Description	Qty. per Assy.	Used on Code	Model / Serial No. From - To
	1		369H2500-505	• Section Instl, Lower, Fuselage Structure (Lower Components) Not Procurable See Fig 2 And 3 For Further BKDN	REF		D 001150-001150 D 001185-001224 D 001227-SUBS MD 001150-001150 MD 001185-001224 MD 001227-SUBS
	1		369H2500-503	• Section Instl, Lower, Fuselage Structure (Lower Components) Not Procurable	REF		D 000850-001149 D 001151-001184 D 001225-001226 MD 000850-001149 MD 001151-001184 MD 001225-001226
	1		369H2500-501	• Section Instl, Lower, Fuselage Structure .. Not Procurable	REF		D 000001-000849 MD 000001-000849
	1	1	369A2500-49	•• Stiffener	1		D
	1	2	369H2508-501	•• Bulkhead	1		D 001150-001150 D 001185-001224 D 001227-SUBS MD 001150-001150 MD 001185-001224 MD 001227-SUBS
	1	2	369H2507	•• Bulkhead	1		D 000001-001149 D 001151-001184 D 001225-001226 MD 000001-001149 MD 001151-001184 MD 001225-001226
	1	3	369A2545-503	•• Floor Instl, Pilot	1		D
	1	4	369H2500-165	•• Doubler	1		D 000424-SUBS MD 000424-SUBS
	1	4	369A2500-165	•• Doubler	1		D 000001-000423 MD 000001-000423
	1	5	369A2500-164	•• Doubler	1		D
	1	6	369A2500-163	•• Doubler	1		D
	1	7	369A2500-63	•• Stiffenern RH	1		D
	1	7	369A2500-47	•• Stiffener, LH	1		D
	1	8	369A2500-9	•• Stiffener, LH	1		D
	1	8	369A2500-10	•• Stiffener, RH	1		D
N	1	9	369A2515-701	•• Compartment Instl	1		D
	1	10	369A2515-30	••• Angle, RH	2		D
	1	10	369A2515-29	••• Angle, LH	2		D
	1	11	369A2515-85	••• Support, LH	1		D
	1	11	369A2515-25	••• Support, LH	1		D
	1	12	369A2515-91	••• Frame, RH	1		D
	1	12	369A2515-3	••• Frame, LH	1		D
	1	13	369A2515-6	••• Stiffener, RH	1		D
	1	13	369A2515-5	••• Stiffener, LH	1		D
	1	14	369A2515-66	••• Bracket, RH	1		D
	1	14	369A2515-65	••• Bracket, RH	1		D
	1	15	369H2500-16	•• Skin, RH	1		D
	1	15	369H2500-15	•• Skin, LH	1		D



P53-2002-1B

Figure 2. FWD Fuselage Structure – Lower Section – 369D (Sheet 1 of 2)



P53-2002-2B

Figure 2. FWD Fuselage Structure - Lower Section - 369D (Sheet 2 of 2)

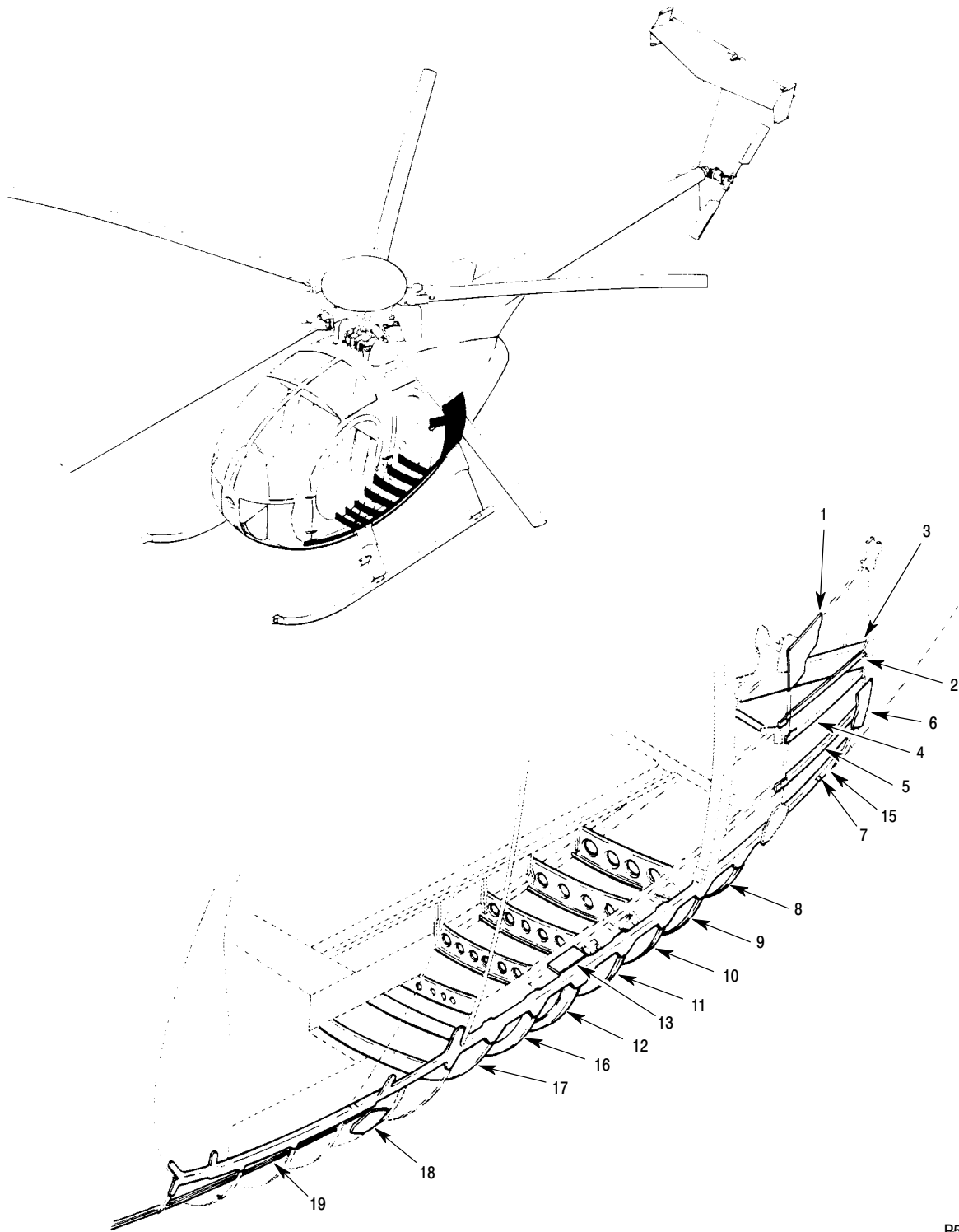
MD Helicopters Inc.
ILLUSTRATED PARTS CATALOG

I L L	Fig. No.	Item No.	Part Number	Description	Qty. per Assy.	Used on Code	Model / Serial No. From - To
	2		369H2500-505	• Section Instl, Lower, Fuselage Structure (Lower Components) Not Procurable See Fig 1 And 3 For Further BKDN	REF		D 001150-001150 D 001185-001224 D 001227-SUBS MD 001150-001150 MD 001185-001224 MD 001227-SUBS
	2		369H2500-503	• Section Instl, Lower, Fuselage Structure (Lower Components) Not Procurable	REF		D 000850-001149 D 001151-001184 D 001225-001226 MD 000850-001149 MD 001151-001184 MD 001225-001226
	2		369H2500-501	• Section Instl, Lower, Fuselage Structure .. Not Procurable	REF		D 000001-000849 MD 000001-000849
	2		369A2519-505	•• Blkd Instl, Flr Sprt Not Procurable	1		D
	2	1	NAS557-3A	••• Grommet Not Procurable	1		D
N	2	2	369H2542-701	•• Structure Assy, Pilot Seat Not Procurable	1		D 000001-SUBS MD 000001-SUBS
N	2	2	369H2542	•• Structure Assy, Pilot Seat Not Procurable	1		D 000001-SUBS MD 000001-SUBS
	2	3	MS21266-2N	••• Grommet, Plastic, Edging Not Procurable	3		D
	2	4	MS21266-1N	••• Grommet, Plastic, Edging Not Procurable	1		D
	2	5	MS35489-6	••• Grommet, Synthetic Rubber, Hot-Oil And Coolant Res Not Procurable	2		D
	2	6	369A7951-27	••• Bearing Not Procurable	1		D
	2	7	369N2602-3	••• Bracket Intrch With 369N2602	1		D
	2	7	369N2602	••• Bracket (Alum) Not Procurable	1		D
	2	7	369A2531	••• Bracket (Mag) Not Procurable	1		D
	2	8	369A2542-193	••• Doubler Not Procurable	1		D
	2	9	MS20470AD4	••• Rivet, Solid-Universal Head Not Procurable	10		D 000671-000683 D 000688-000721 D 000724-SUBS MD 000671-000683 MD 000688-000721 MD 000724-SUBS
	2	10	369H2542-107	••• Bracket Not Procurable	2		D 000671-000683 D 000688-000721 D 000724-SUBS MD 000671-000683 MD 000688-000721 MD 000724-SUBS
	2	11	MS20426AD3	•• Rivet, Solid, Countersunk Not Procurable	AR		D
	2	12	369A8128	•• Fairing, Fuel Tank Vent Not Procurable	1		D
N	2	13	369H2524	•• Beam Assy, Center See Fig 5 For Further BKDN	1		D
	2	14	NAS1368N3A	•• Grommet Not Procurable	10		D
	2	15	NAS557-6A	•• Grommet, Plastic - Split Not Procurable	3		D
	2	16	MS35489-135	•• Grommet Not Procurable	1		D
	2	17	MS35489-5	•• Grommet Not Procurable	1		D
	2	18	G51P4	•• Grommet Not Procurable	18		D
	2	19	NAS1291-3	•• Nut Not Procurable	2		D
	2	20	AN960KD10L	•• Washer, Flat Not Procurable	2		D
	2	21	AN3-3A	•• Bolt Not Procurable	2		D

MD Helicopters Inc.
ILLUSTRATED PARTS CATALOG

CSP-IPC-4

I L L	Fig. No.	Item No.	Part Number	Description	Qty. per Assy.	Used on Code	Model / Serial No. From - To
	2	22	AN735D12	•• Clamp, Loop Type, Bonding	2		D
	2	23	369H2523	•• Frame Instl, Lower Section	1		D
				Not Procurable See Fig 6 For BKDN			
	2	24	SS51074	•• Button, Plug	1		D
	2	25	SS48179	•• Button, Plug	2		D
	2	26	HS50726	•• Button, Plug	1		D
	2	27	SS51034	•• Button, Plug	2		D
	2	28	MS20470AD3	•• Rivet, Solid-Universal Head	12		D
	2	29	MS20426AD4	•• Rivet, Solid, Countersunk, 100 Deg	9		D
	2	30	369H2571-501	•• Fairing Assy	1		D
	2	31	369A2508-503	•• Floor Instl, Cargo, Lower Section	1		D
				Not Procurable See Fig 7 For BKDN			
	2	32	369N2541-1	• Bracket	1	A	
	2	32	369A2541-7	• Bracket	1	B	
	2	33	MS20470B4	•• Rivet	AR		
	2	34	NAS686A3	•• Nutplate	AR	A	
	2	34	MS21059L3	•• Nutplate	AR	B	
	2	35	MS20426AD3	•• Rivet	AR		



P53-2003A

Figure 3. Fuselage Structure - Lower Section - 369D